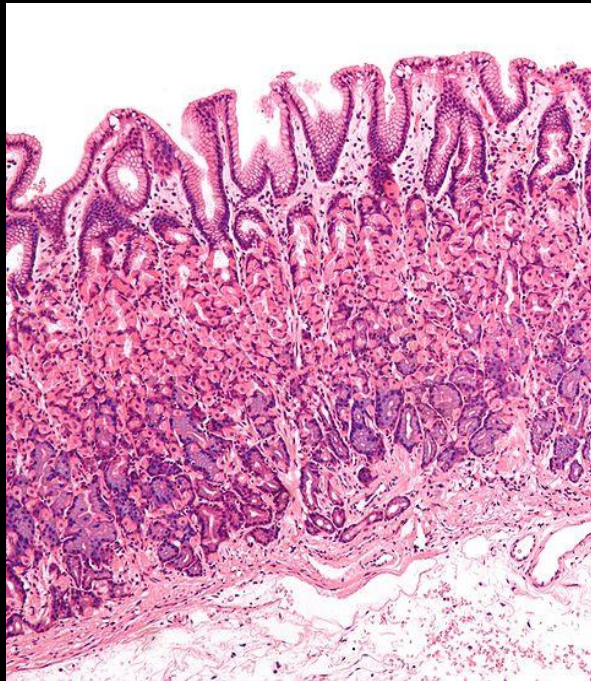




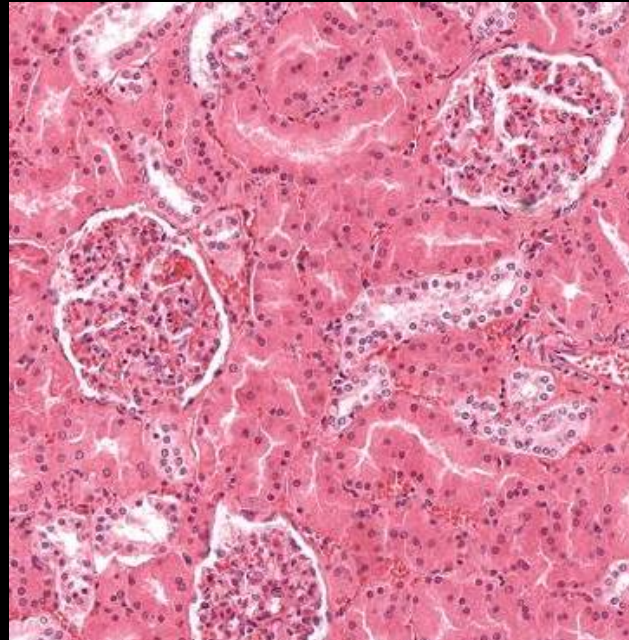
# ANTICORPS ANTI - ORGANES

MALADIES DU TUBE DIGESTIF

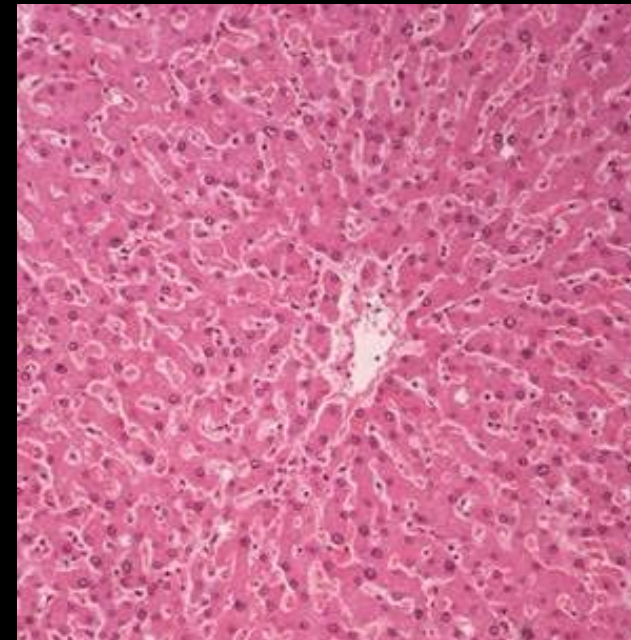
*IF SUR TRIPLE SUBSTRAT*



**ESTOMAC**



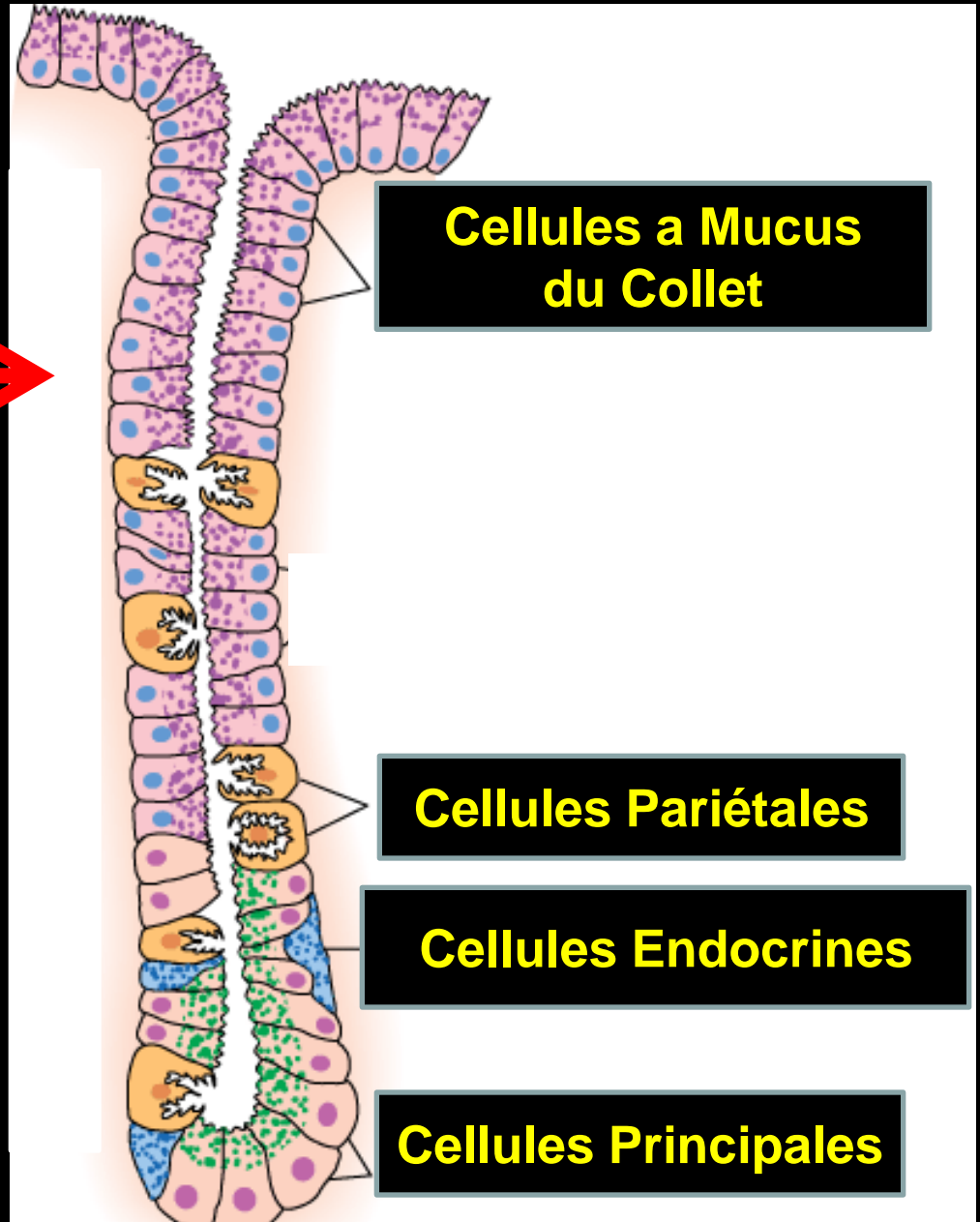
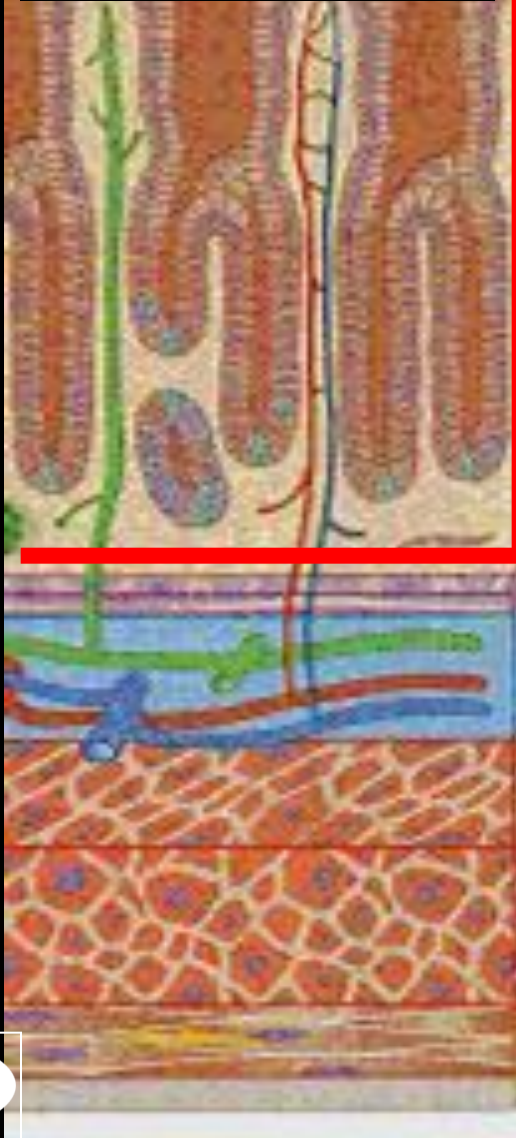
**REIN**

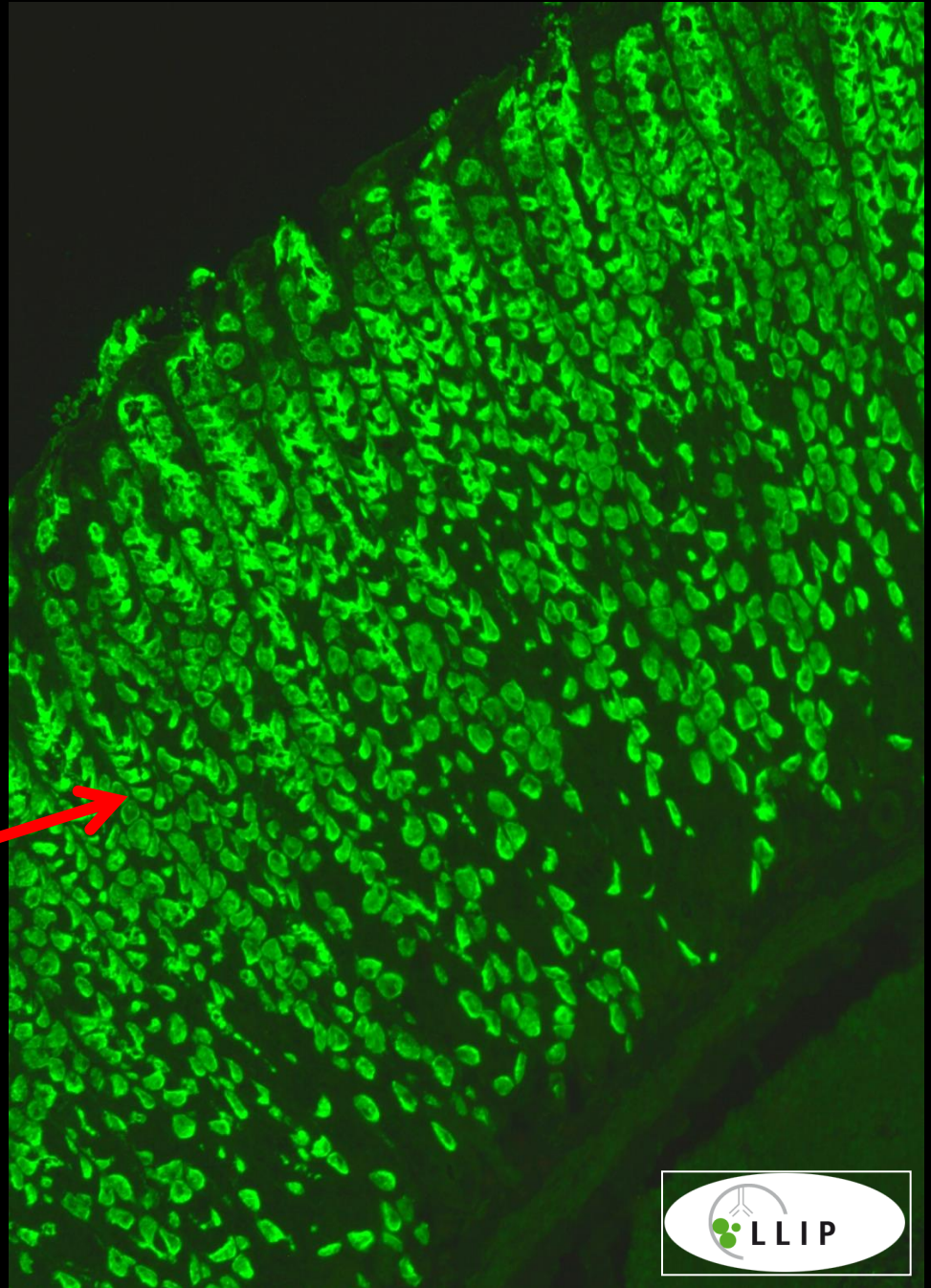
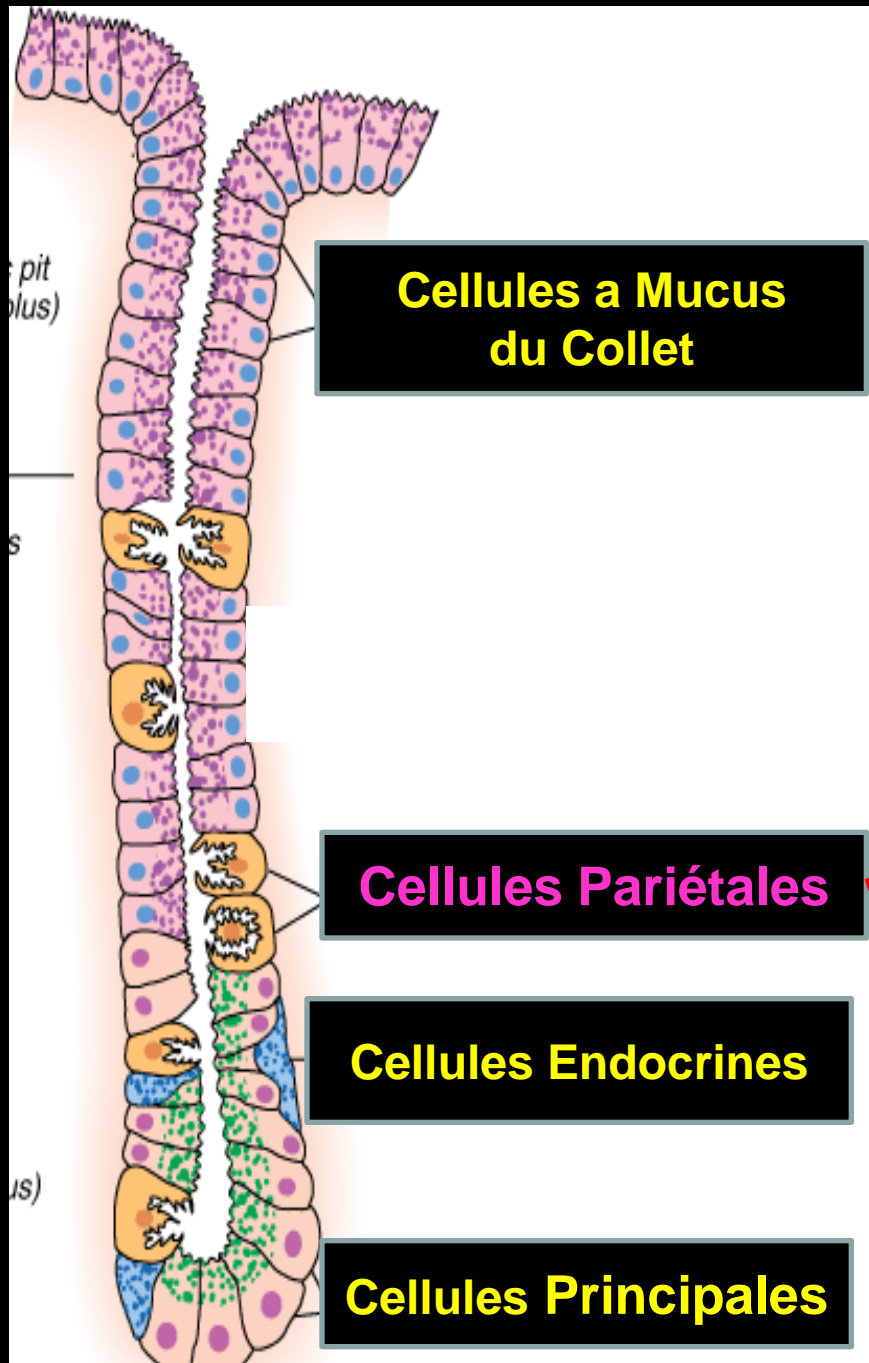


**FOIE**

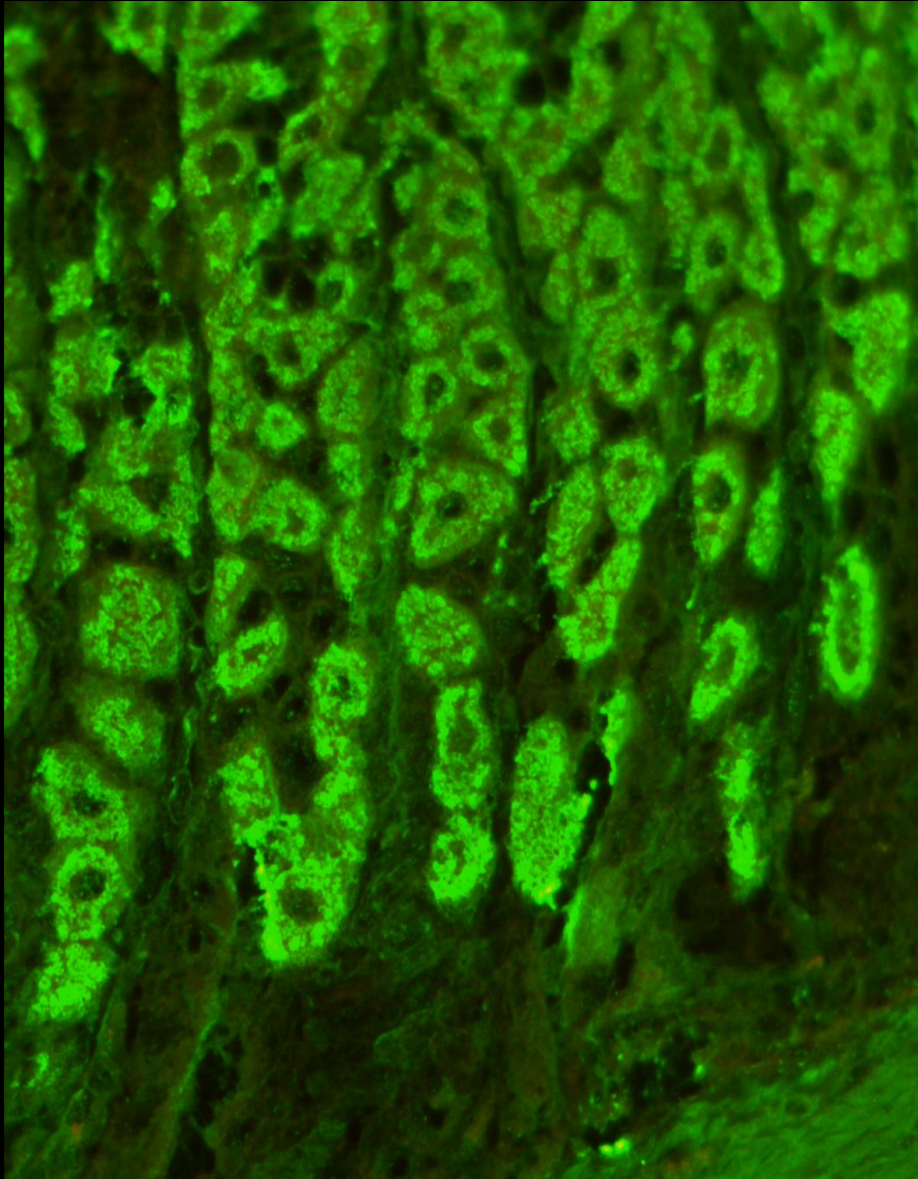
**ESTOMAC**

**MUQUEUSE**

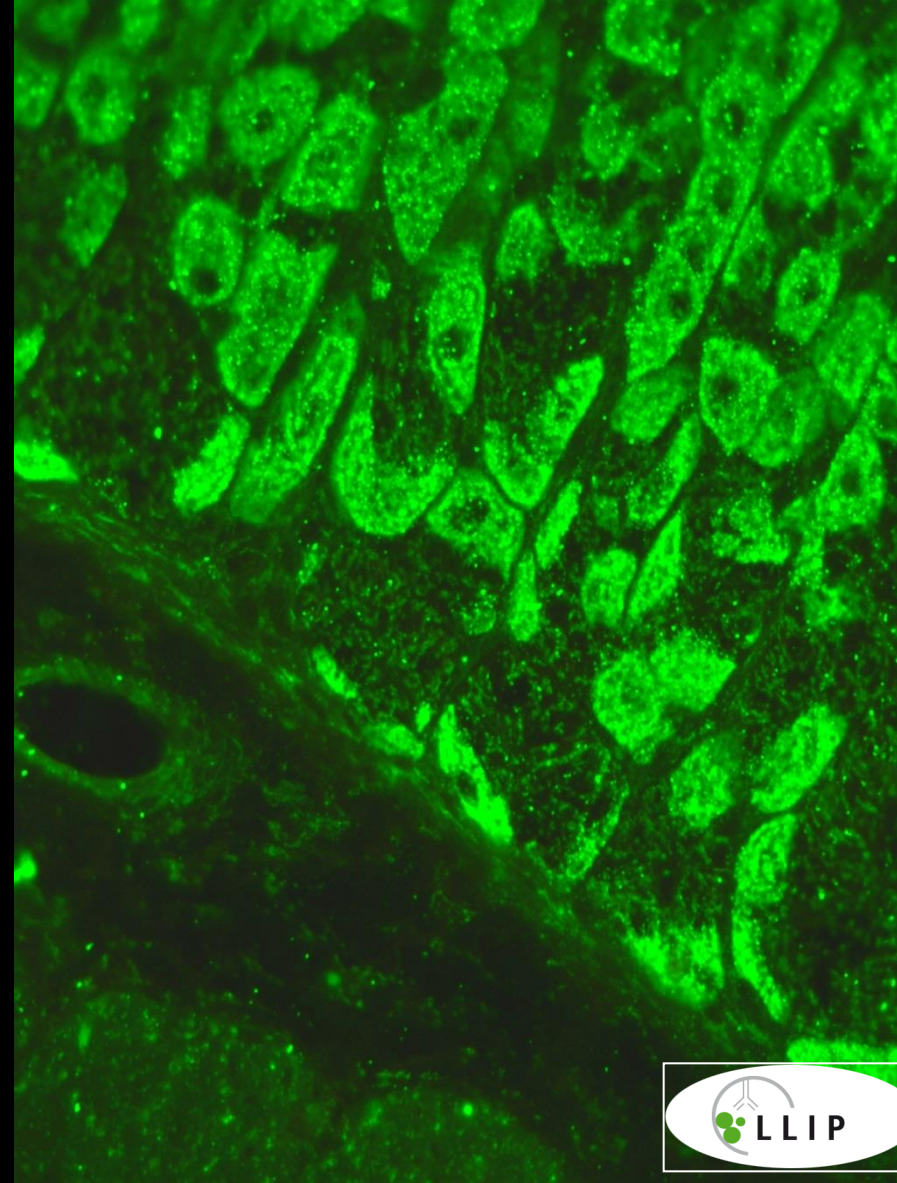




# CELLULES PARIETALES

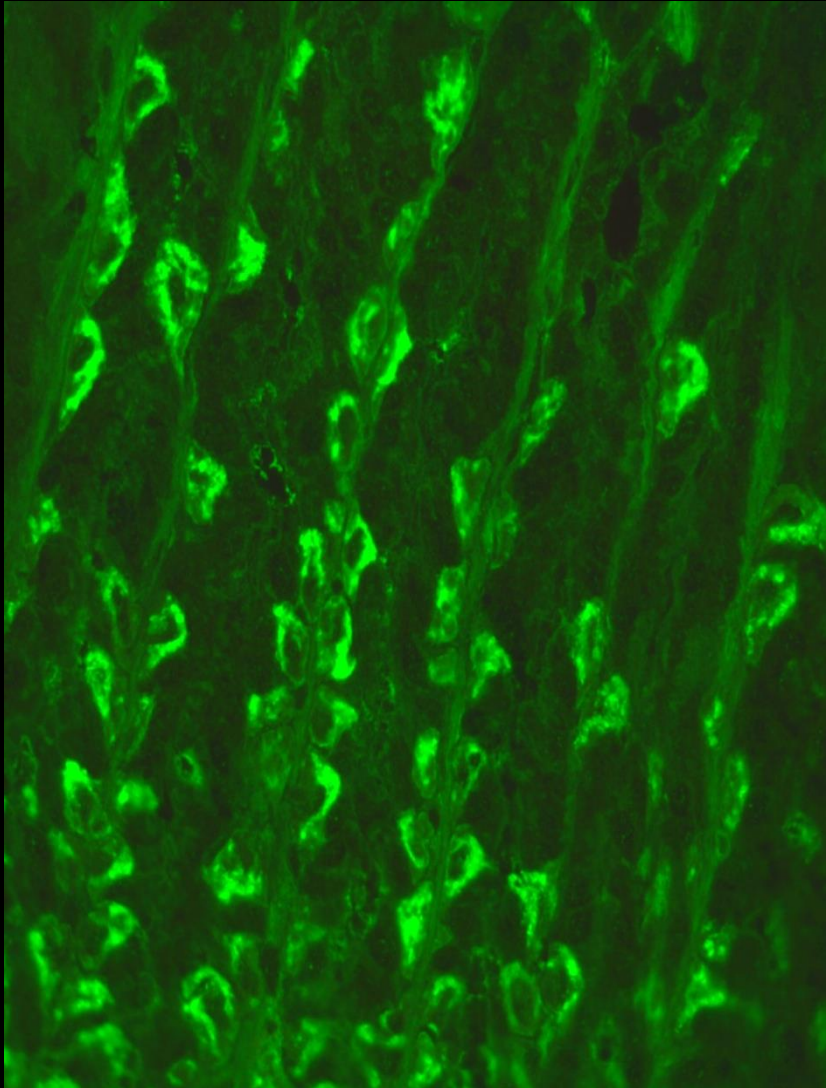


# MITOCHONDRIES

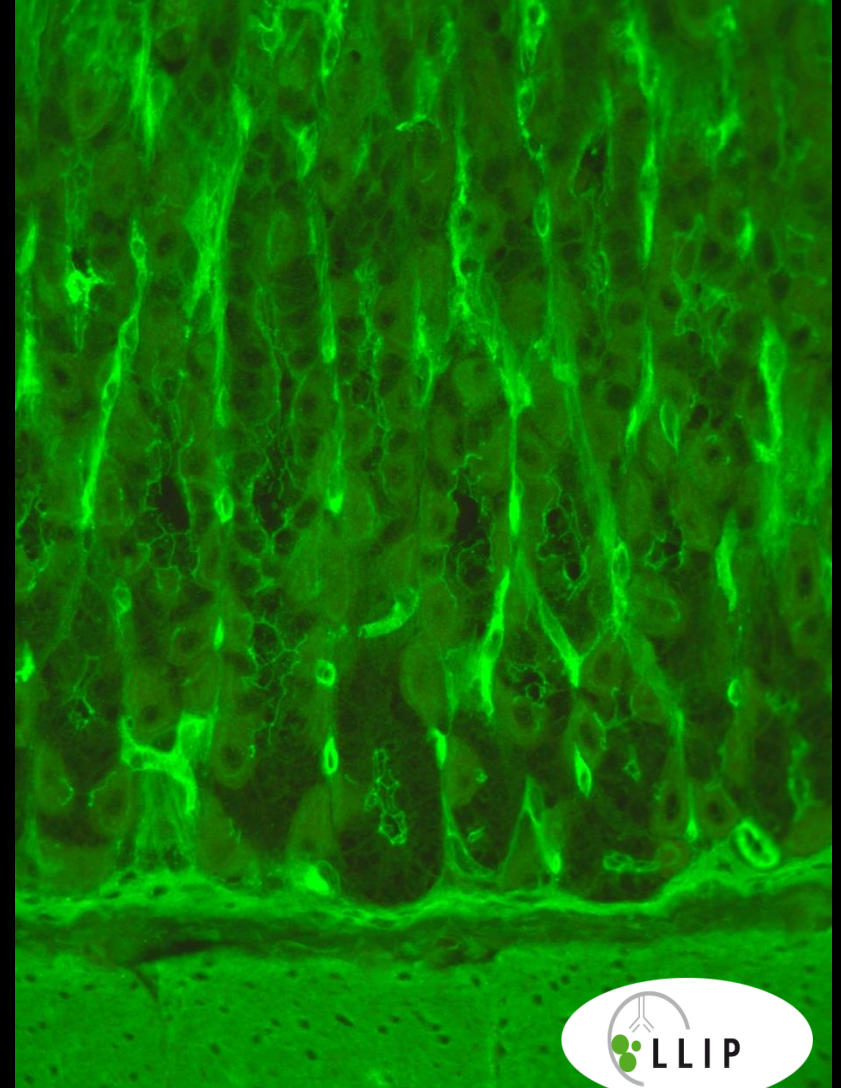


# ANTICORPS HETEROPHILES

ESTOMAC DE RAT



ESTOMAC DE SOURIS



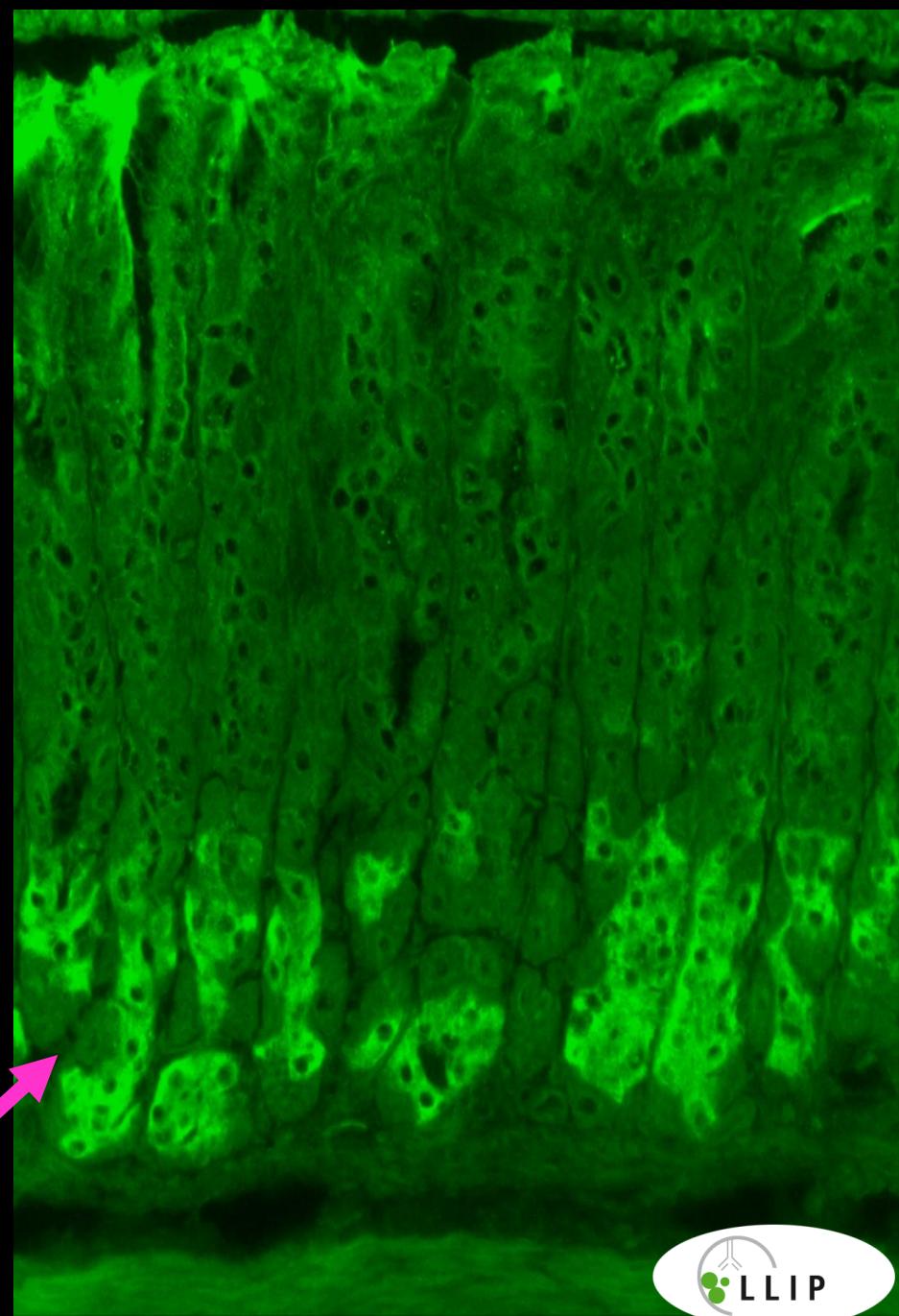


**Cellules a Mucus  
du Collet**

**Cellules  
Pariétales**

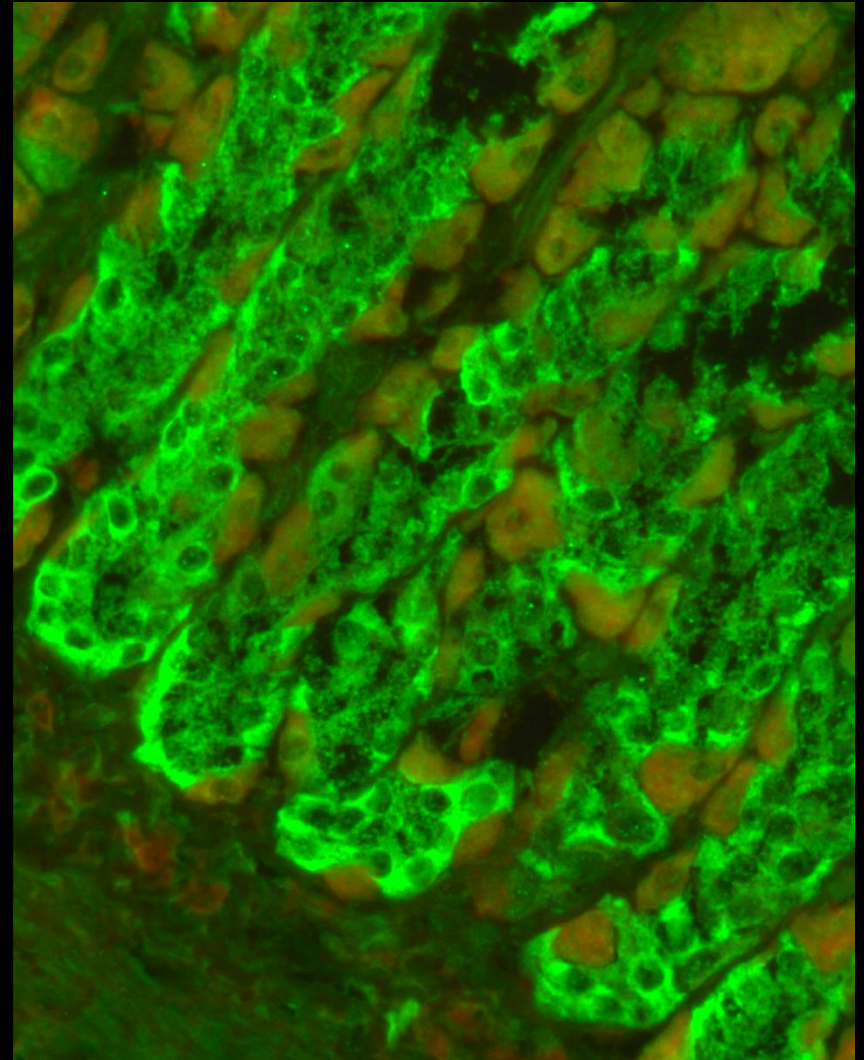
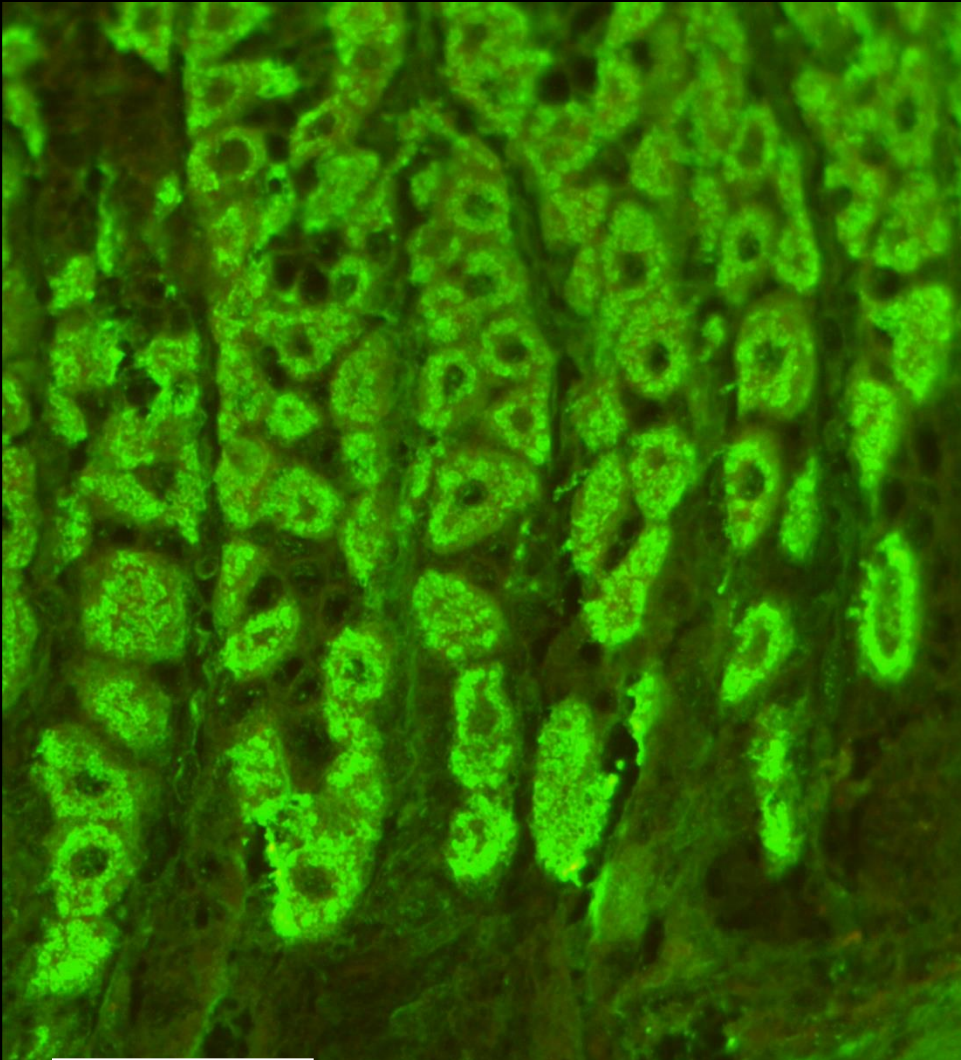
**Cellules Endocrines**

**Cellules  
Principales**



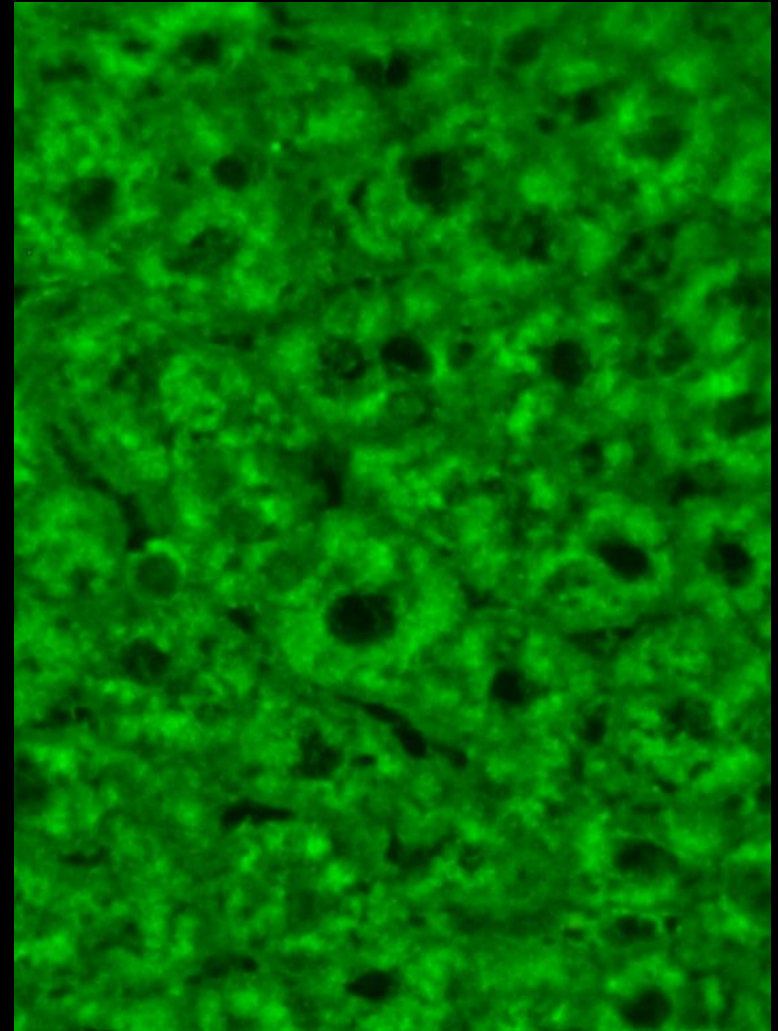
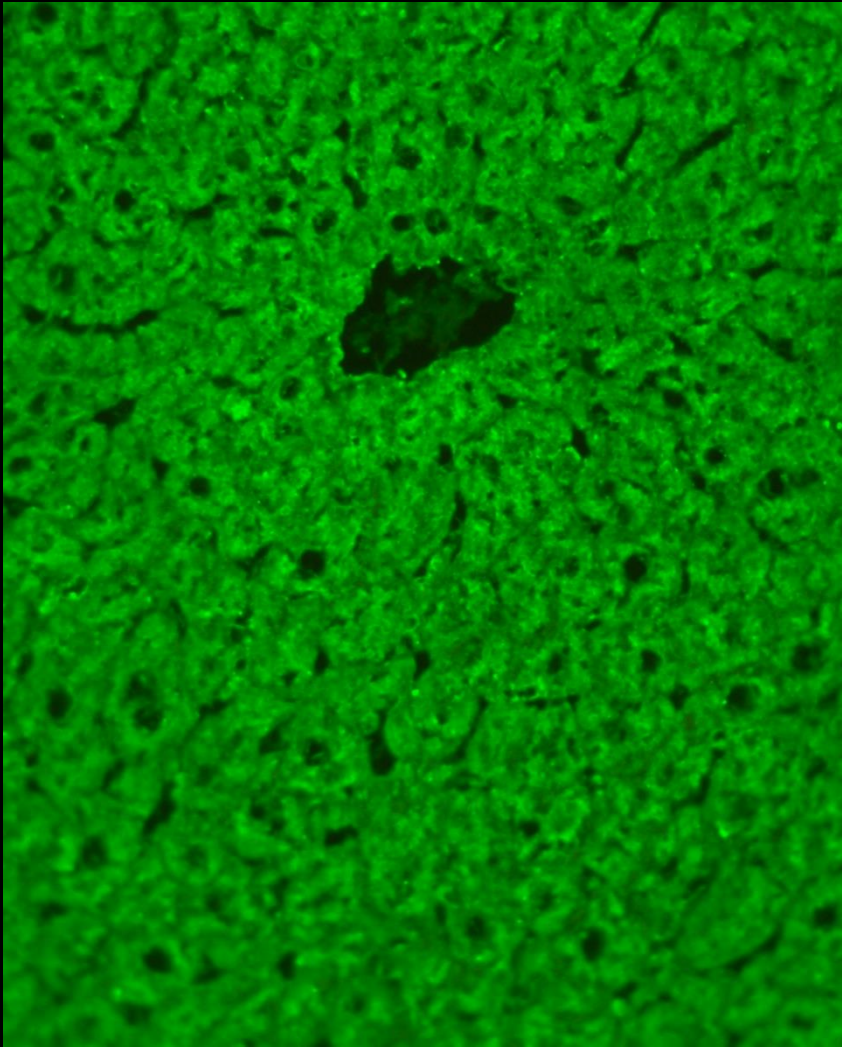
**CELLULES PARIETALES**

**CELLULES PRINCIPALES**



**ESTOMAC DE SOURIS**

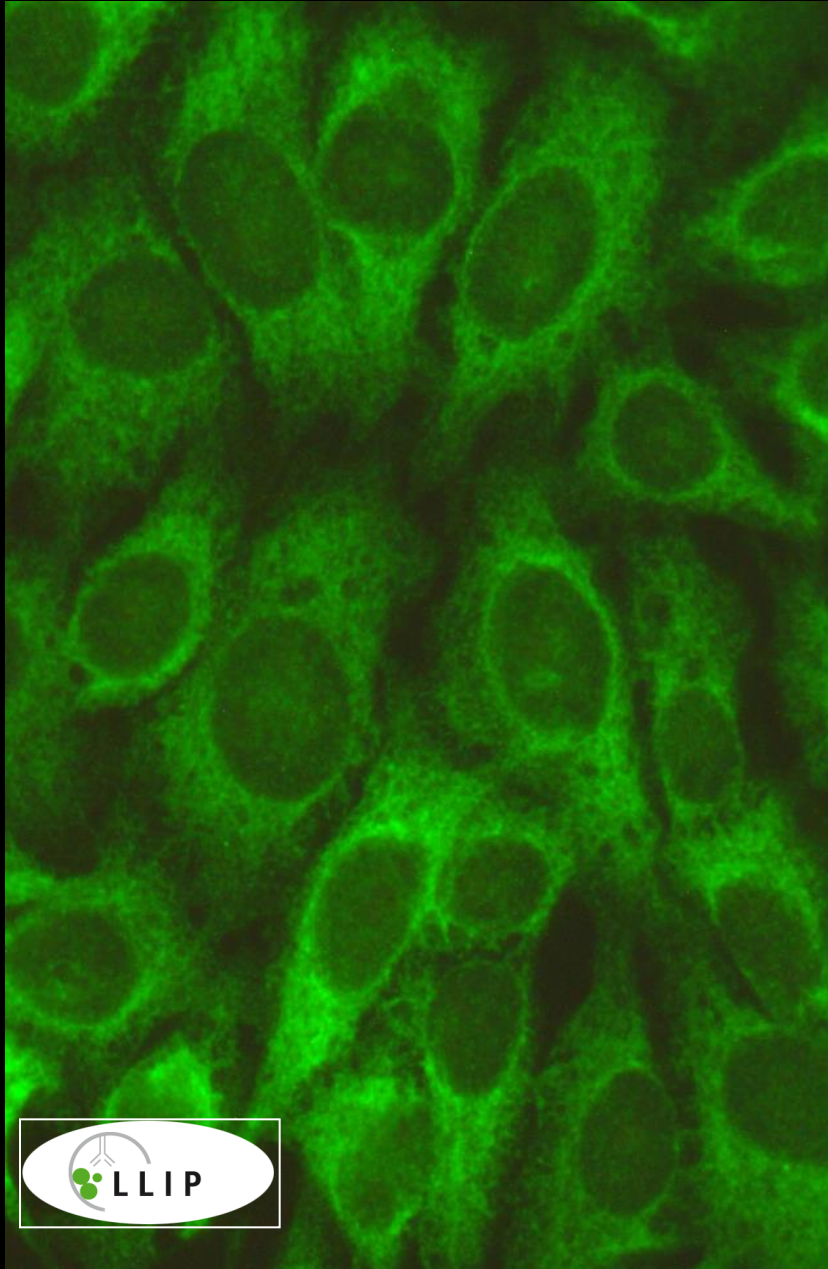
# ANTI - RIBOSOMES / SRP



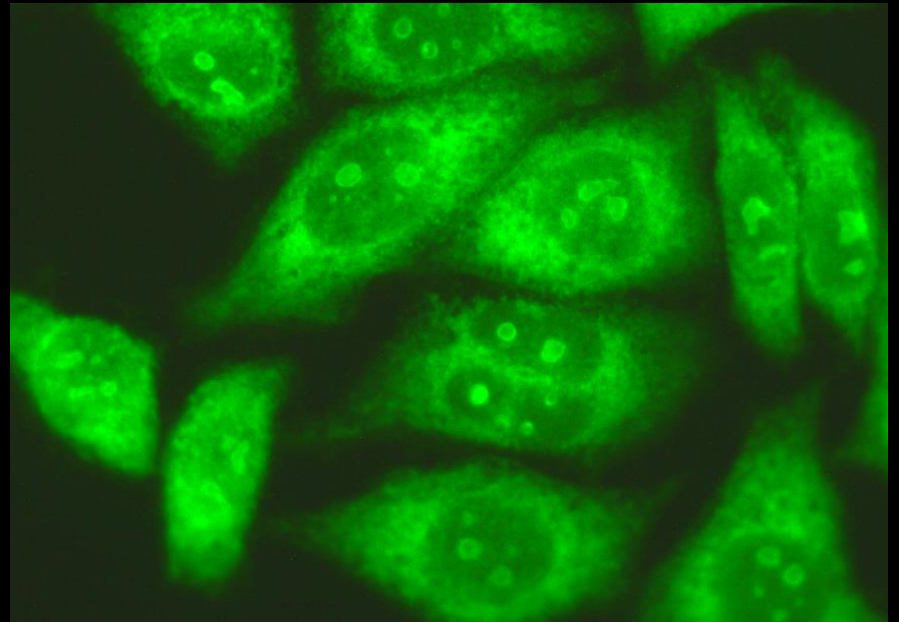
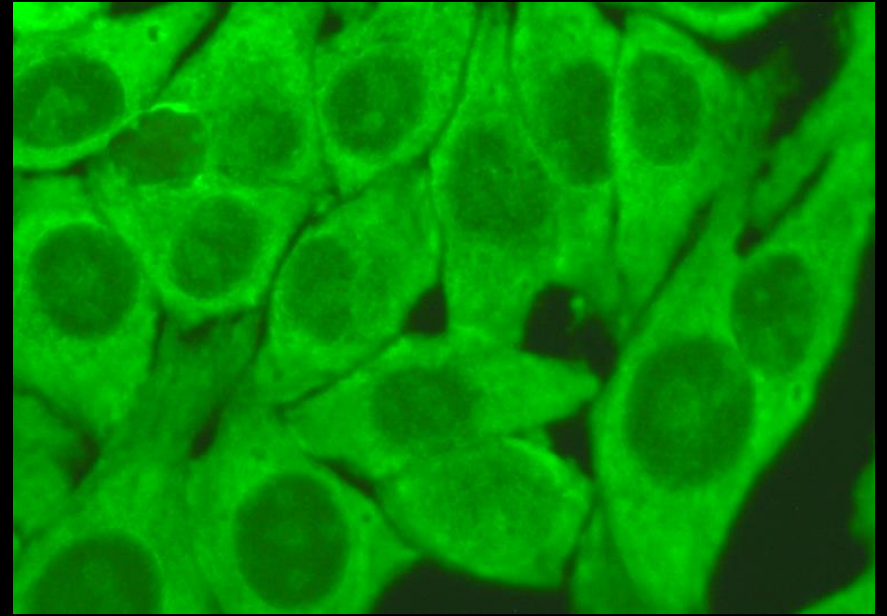
**FOIE DE SOURIS**

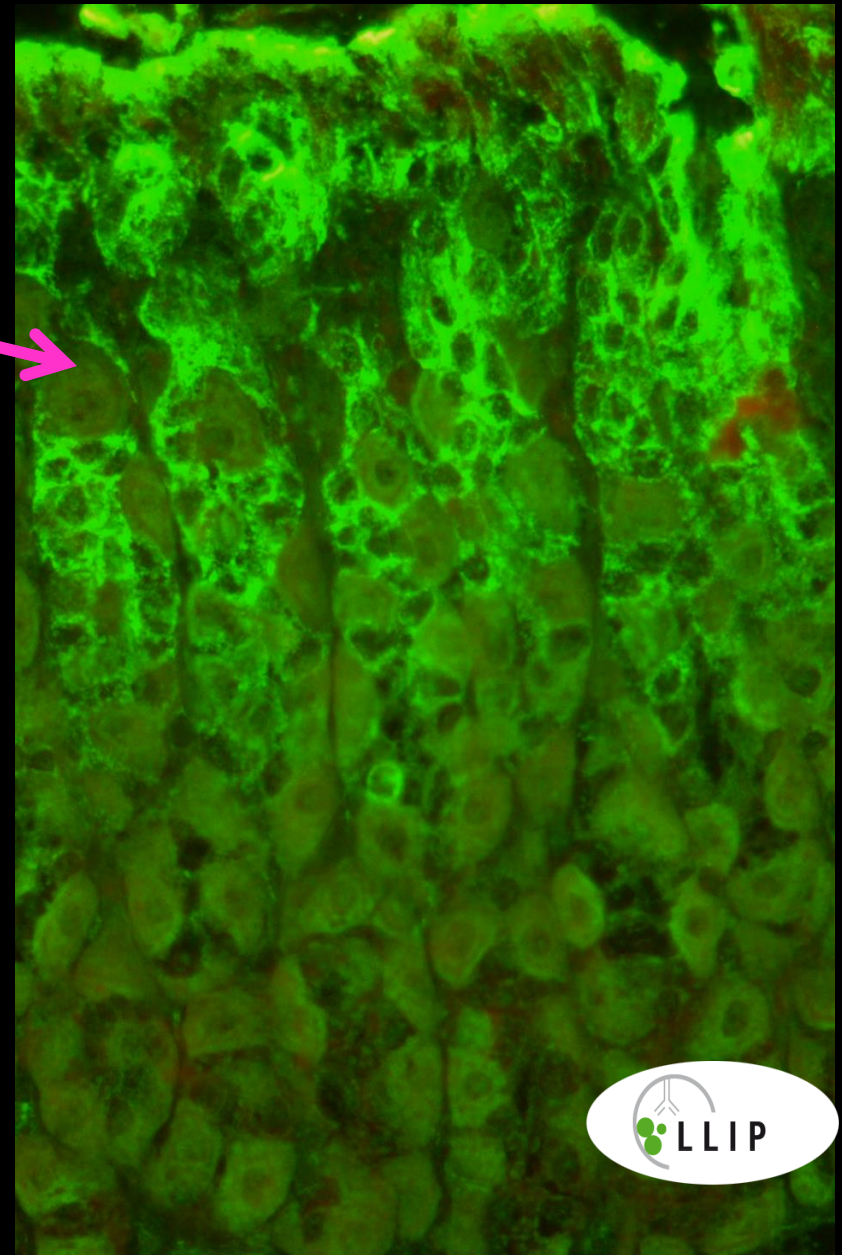
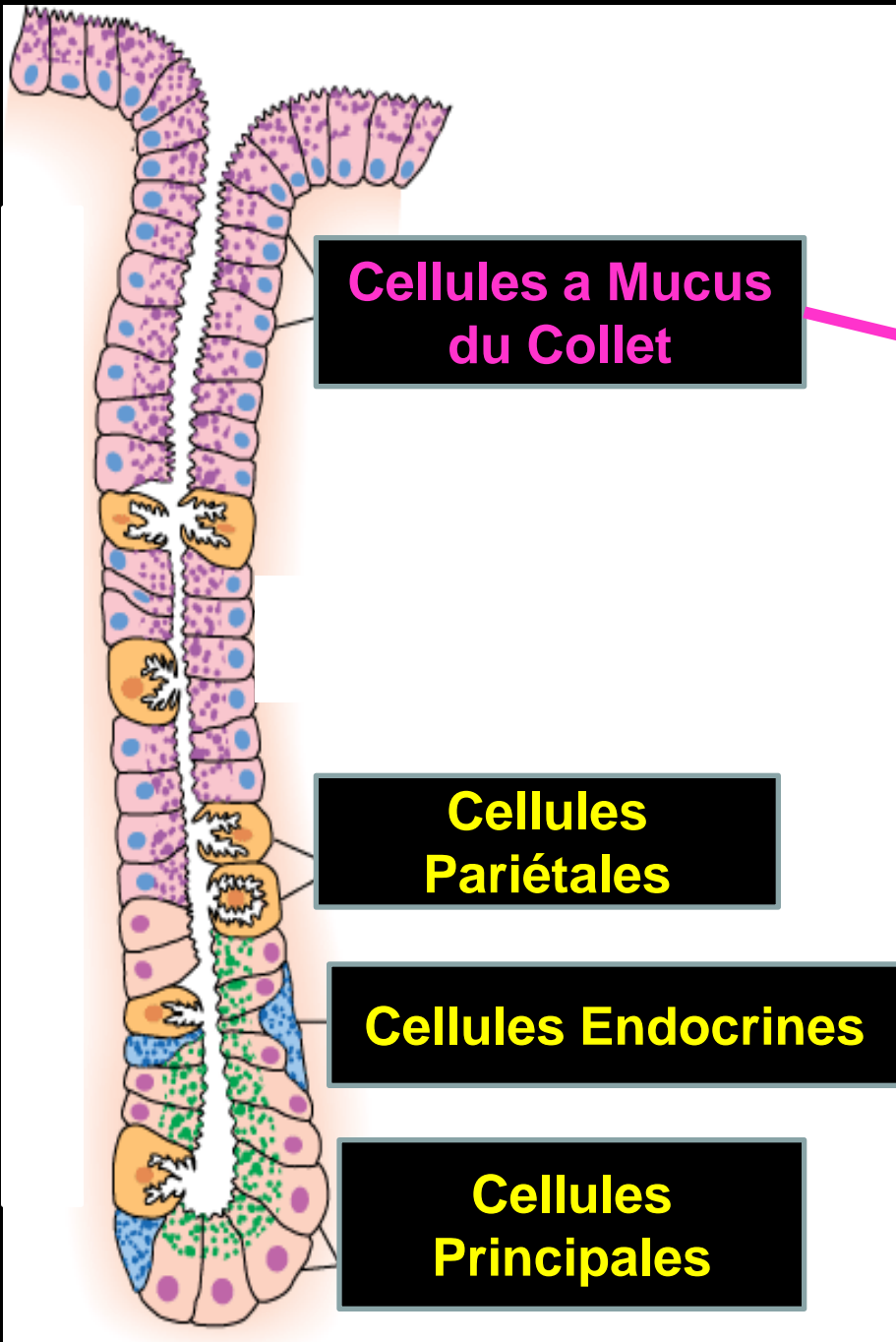


# ANTI-SRP



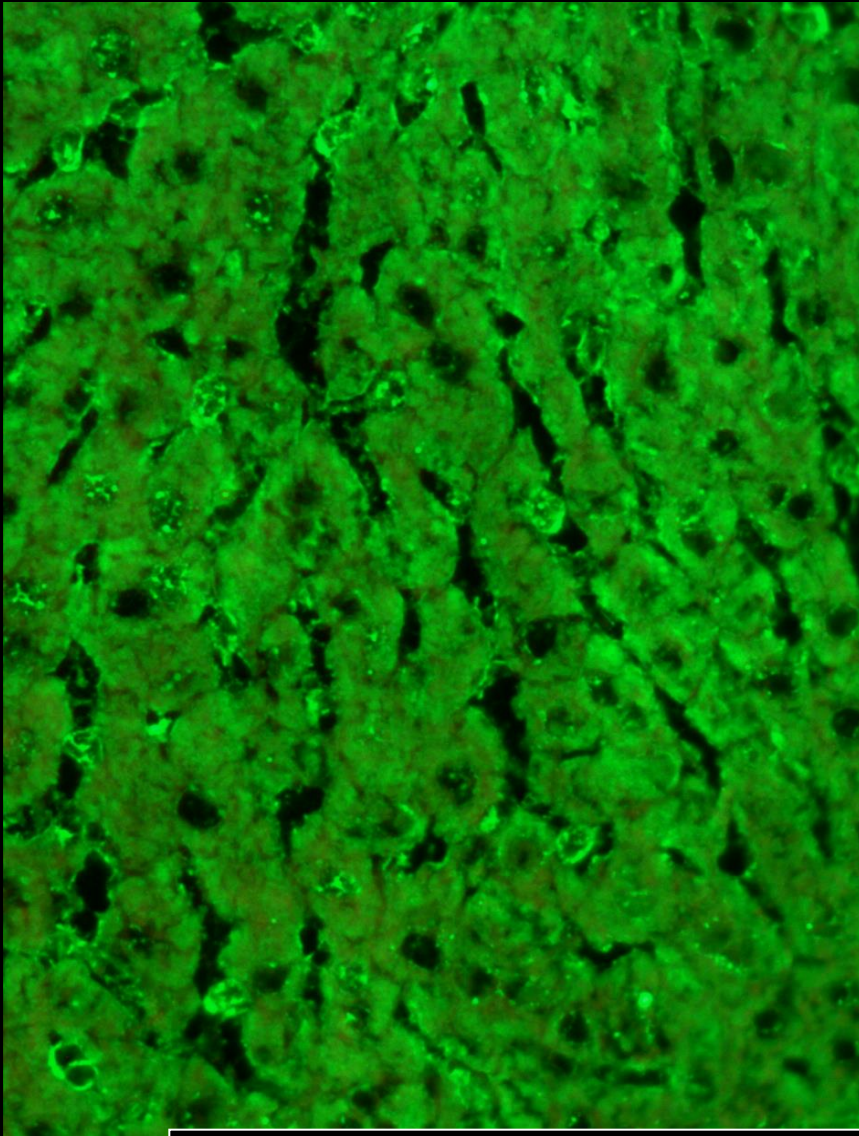
# ANTI-RIBOSOMES



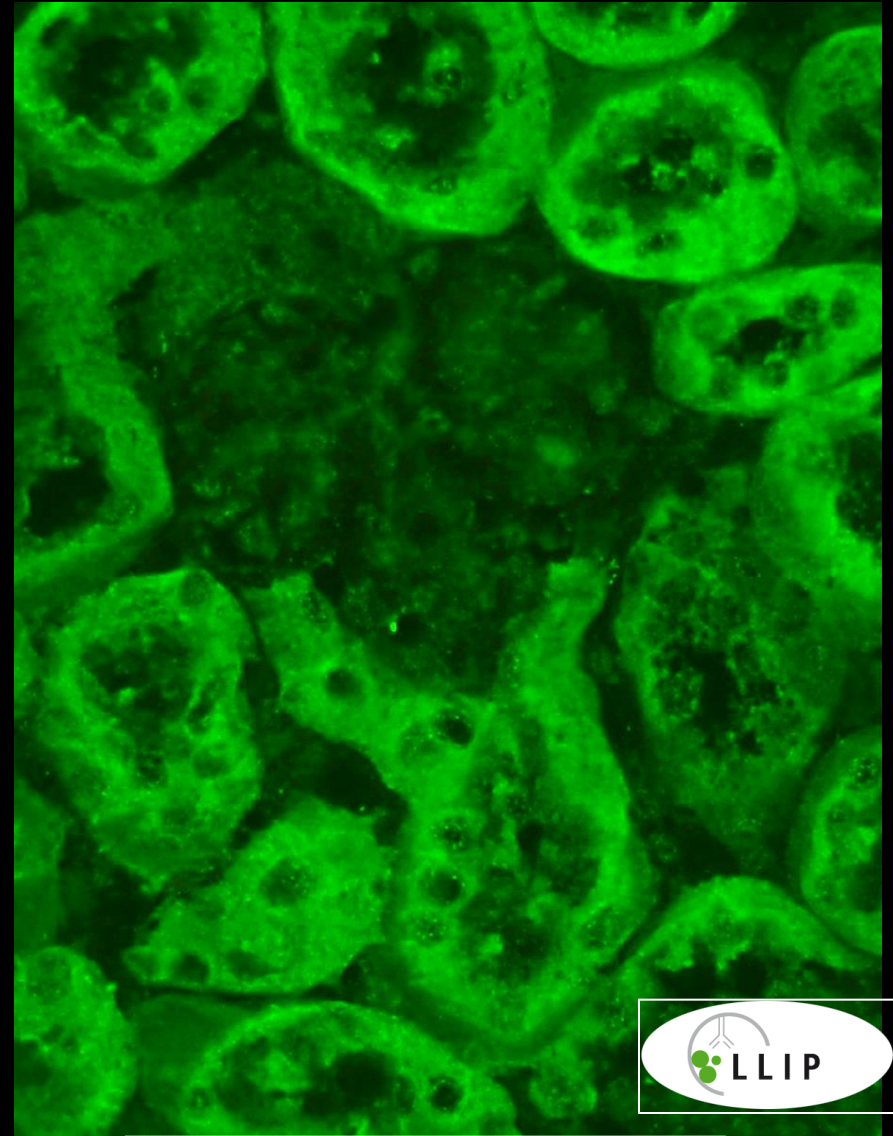


**ANTI-MITOCHONDRIA M5**

# ANTICORPS ANTI-MITOCHONDRIE M5

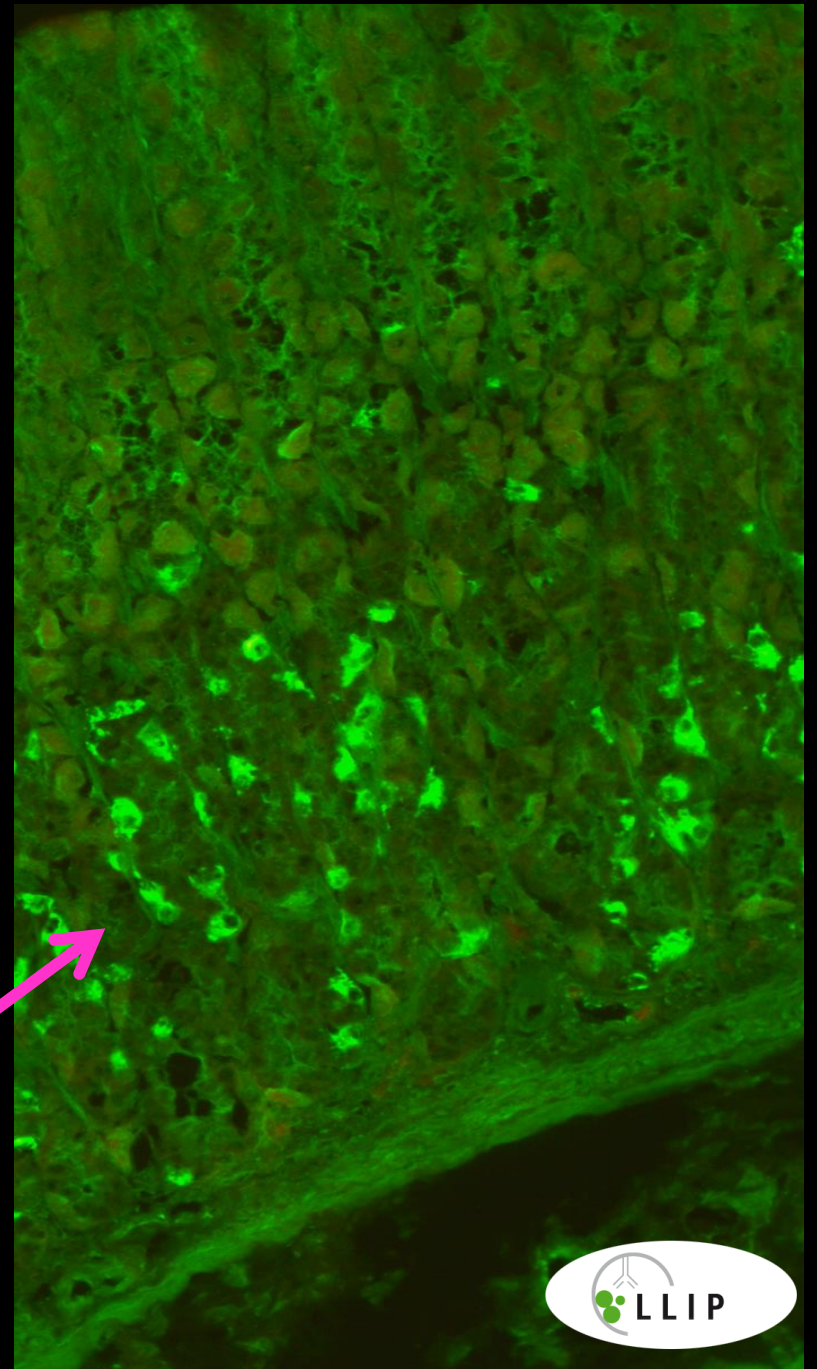
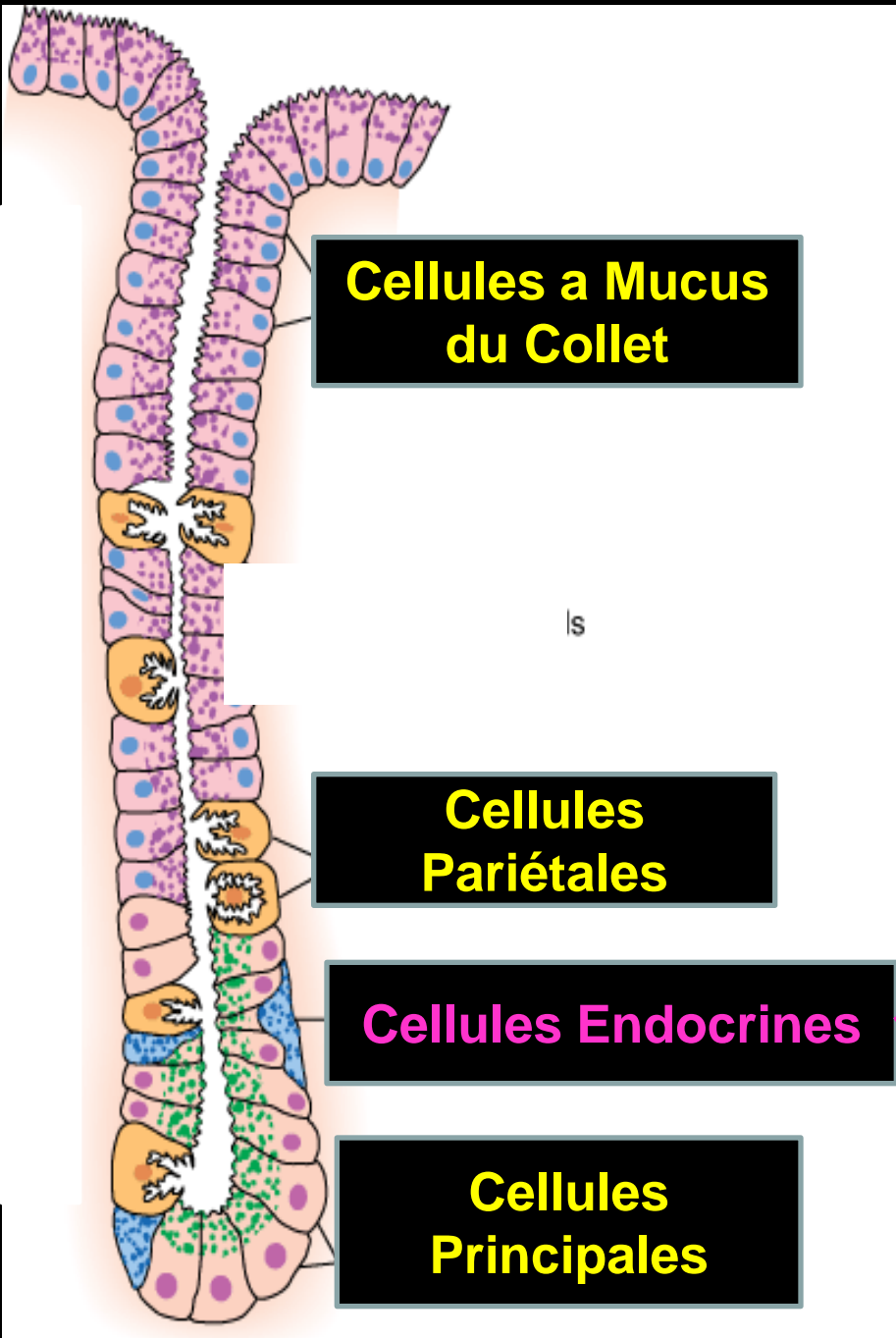


**FOIE DE SOURIS**



**REIN DE SOURIS**





# ANTI-CELLULES ENTEROCHROMAFFINES

CELLULES APUD

Amine

Precursor

Uptake and

Decarboxylation

ANTI-MONOAMINE OXYDASE B

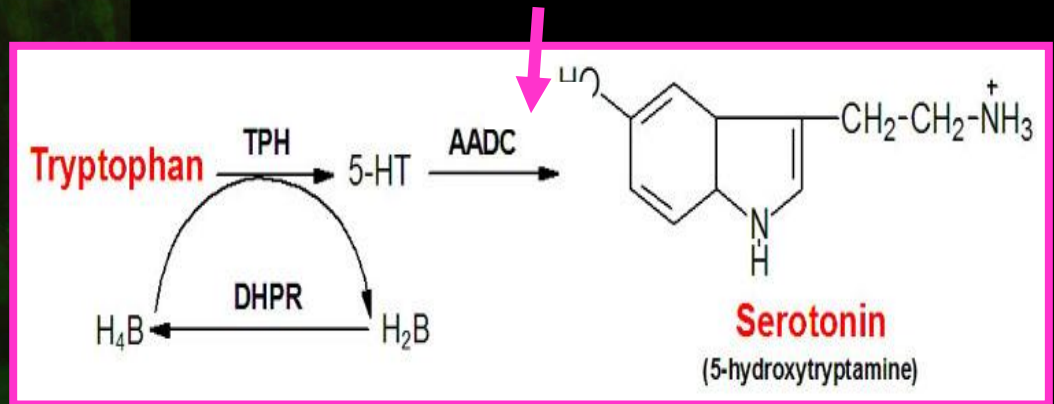
*MITOCHONDRIE M6*

*HEPATITE IPRONIAZIDE*



# CELLULES A SEROTONINE

## TRYPTOPHAN HYDROXYLASE



Lancet. 1999 Aug 14;354(9178):568.

**Tryptophan hydroxylase autoantibodies and intestinal disease in autoimmune polyendocrine syndrome type 1.**

Ekwall O, Sjöberg K, Mirakian R, Rorsman F, Kämpe O.

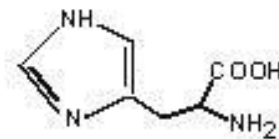
Department of Medical Sciences, Uppsala University, University Hospital, 751 85 Uppsala, Sweden.  
Filip.Skoldberg@medsci.uu.se



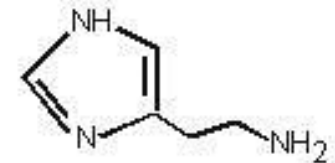
# ANTI-CELLULES ENTEROCHROMAFFIN LIKE

## Cellules à Histamine

### HISTIDINE DECARBOXYLASE



Histidine



Histamine

*J Clin Endocrinol Metab.* 2003 Apr;88(4):1445-52.

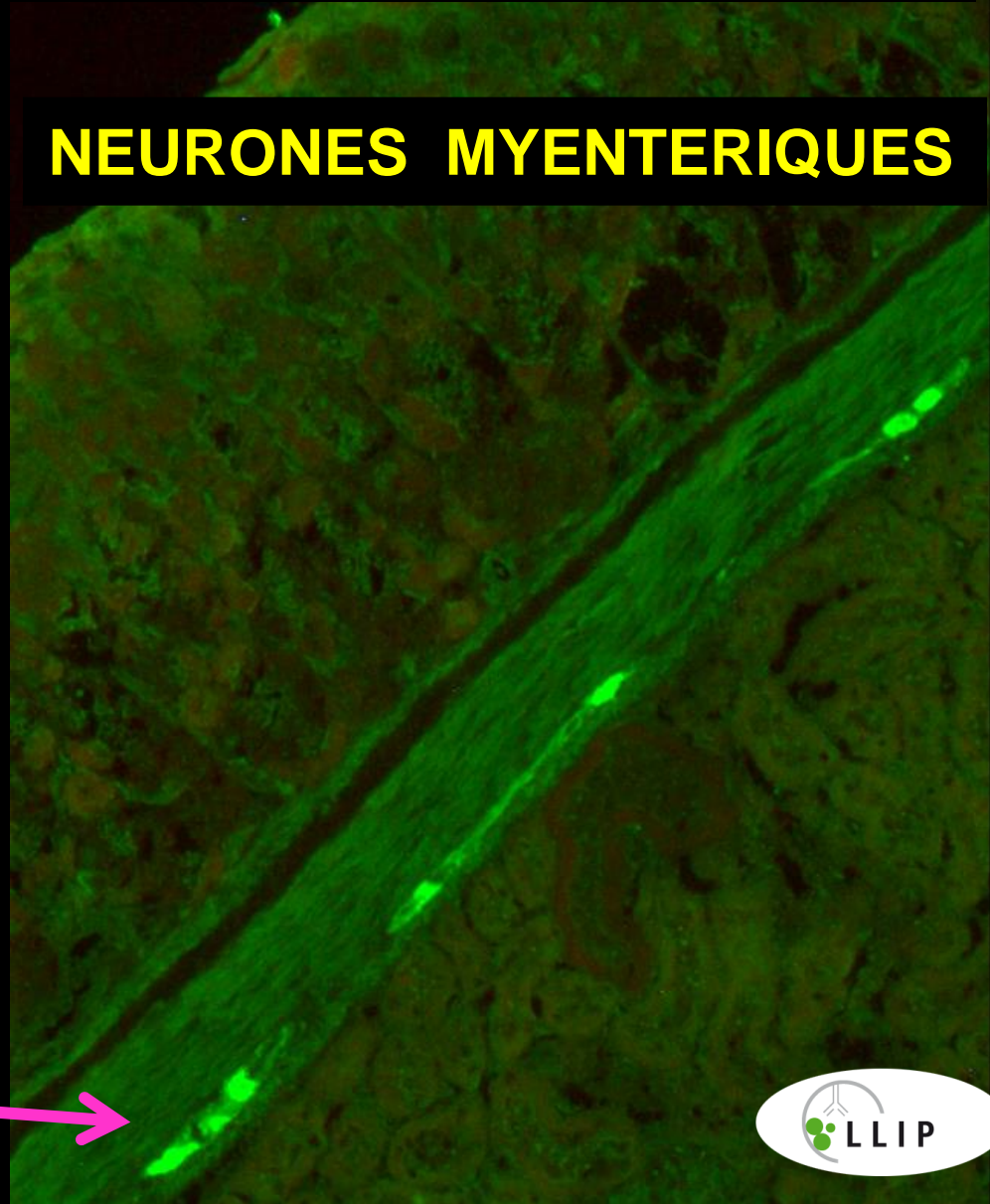
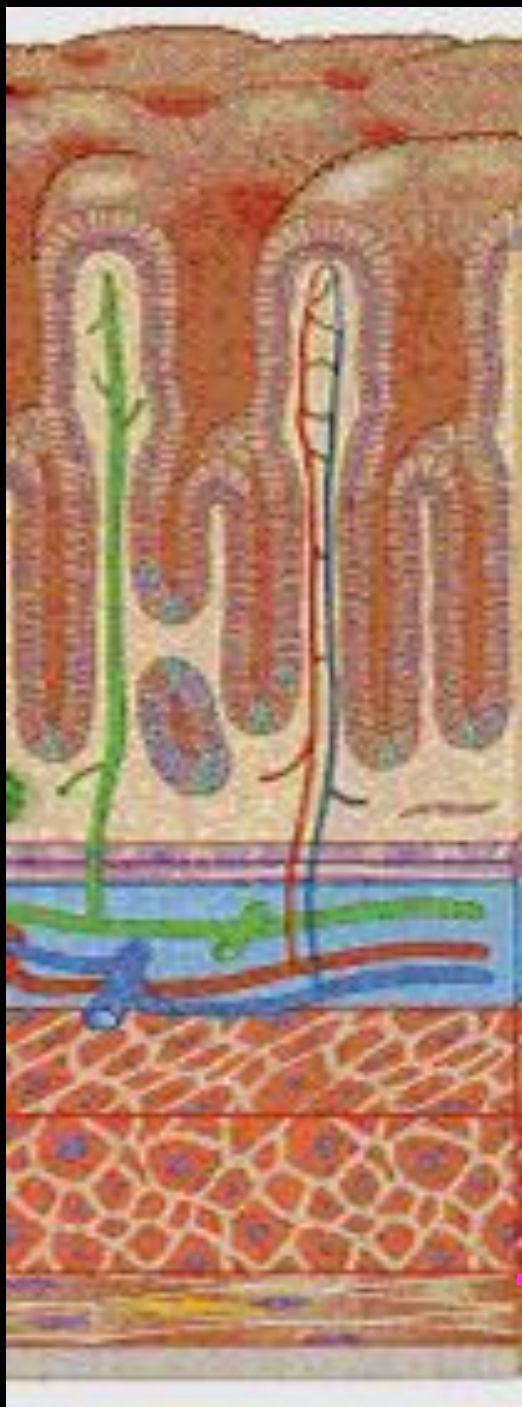
**Histidine decarboxylase, a pyridoxal phosphate-dependent enzyme, is an autoantigen of gastric enterochromaffin-like cells.**

Sköldberg F, Portela-Gomes GM, Grimelius L, Nilsson G, Perheentupa J, Betterle C, Husebye ES, Gustafsson J, Rönblom A, Rorsman F, Kämpe O.

Department of Medical Sciences, Uppsala University, University Hospital, 751 85 Uppsala, Sweden.  
Filip.Skoldberg@medsci.uu.se

# PLEXUS D'AUERBACH

## NEURONES MYENTERIQUES







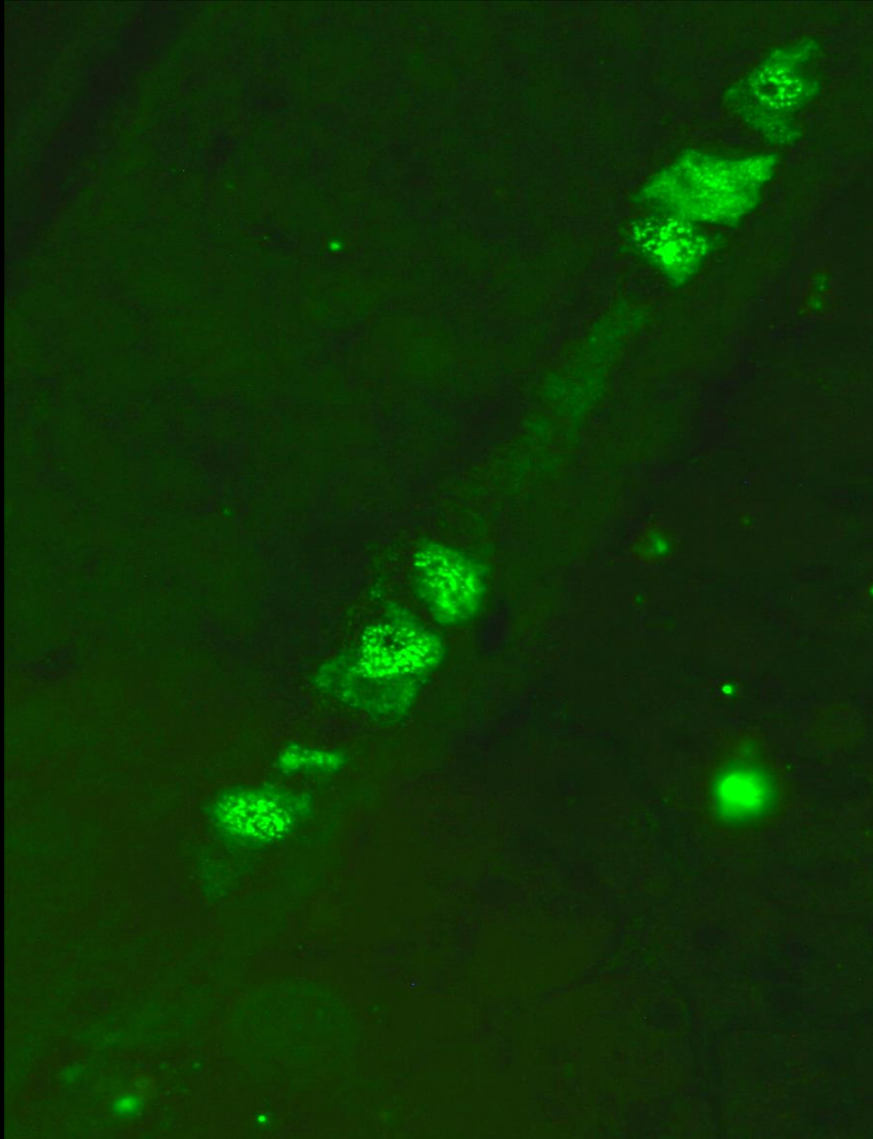
**NEURONES MYENTERIQUES**  
**Noyau et Cytoplasme**

**ANTI-Hu**

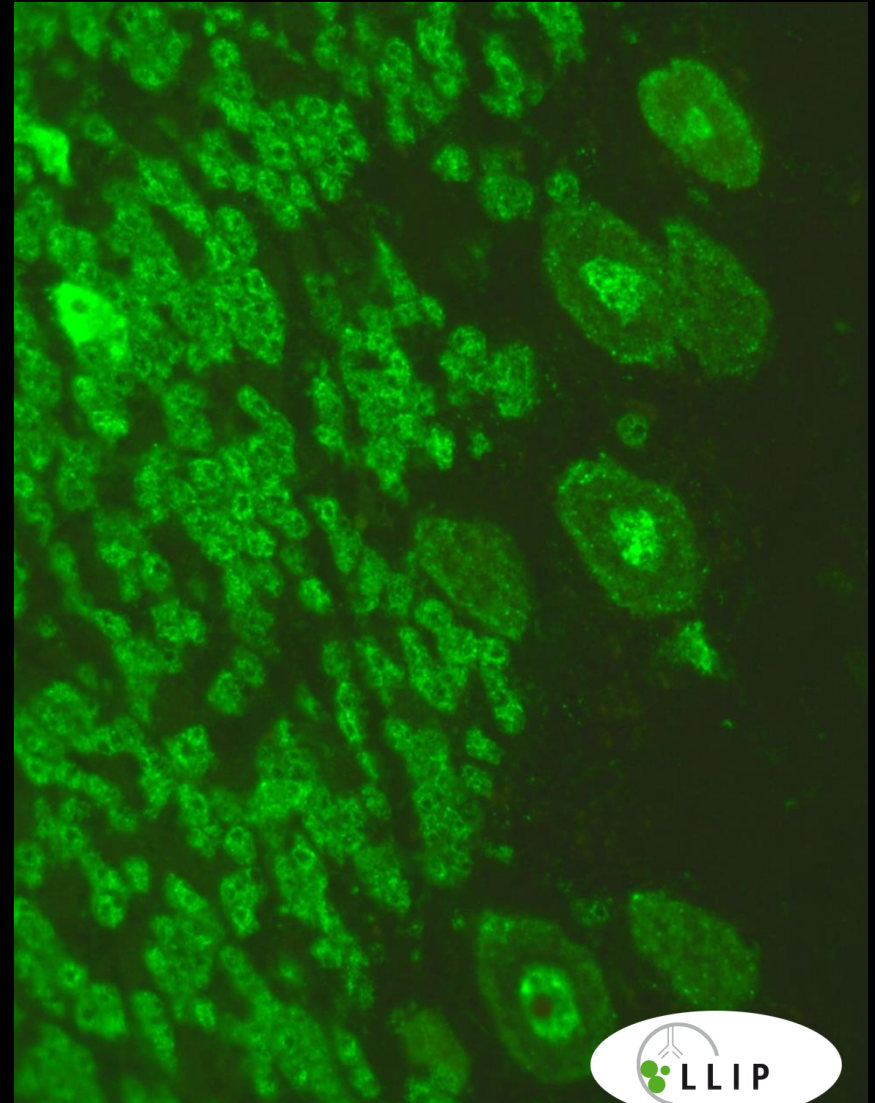


# ANTI-Hu

Estomac de Souris



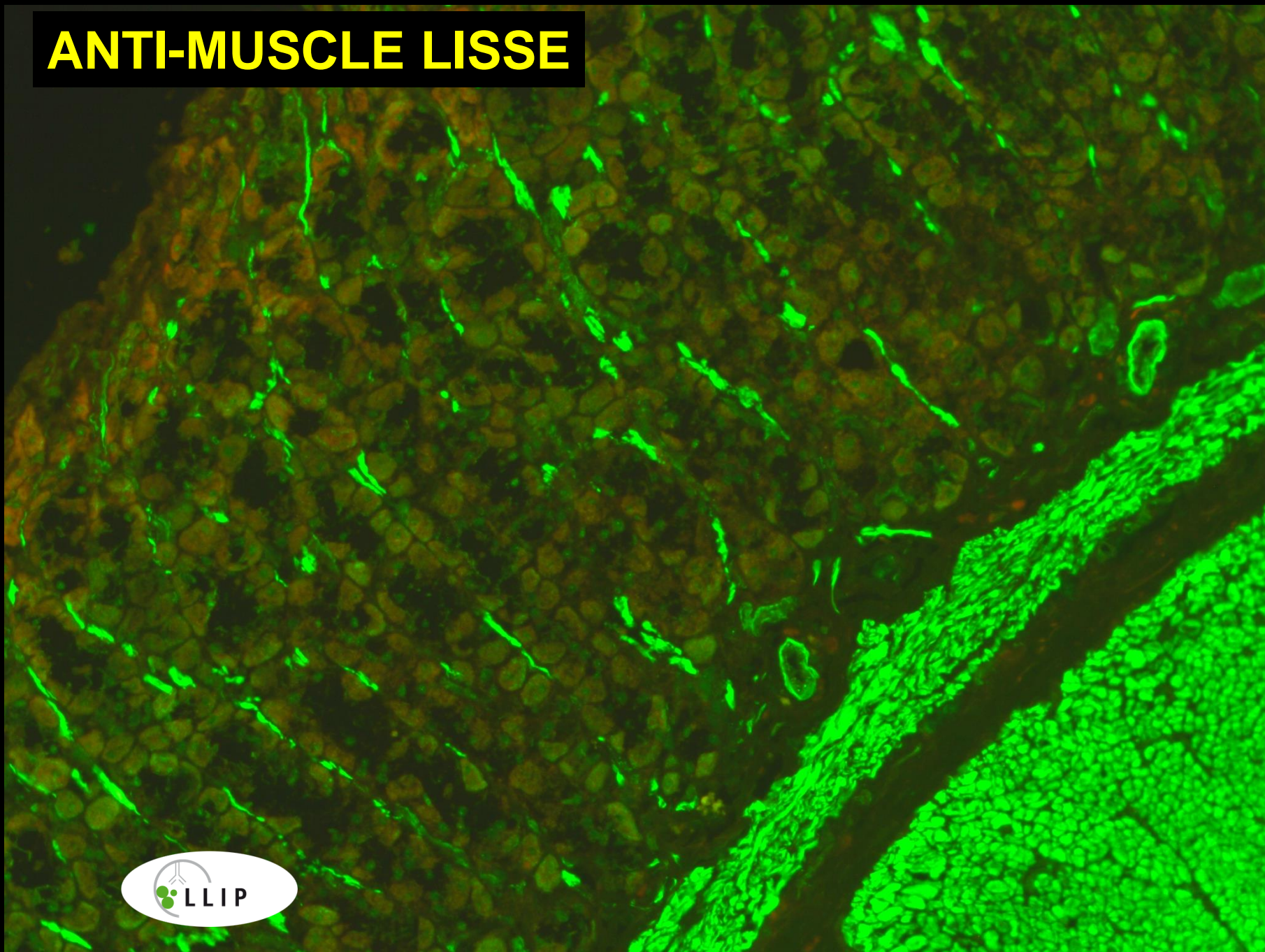
Cervelet de Singe



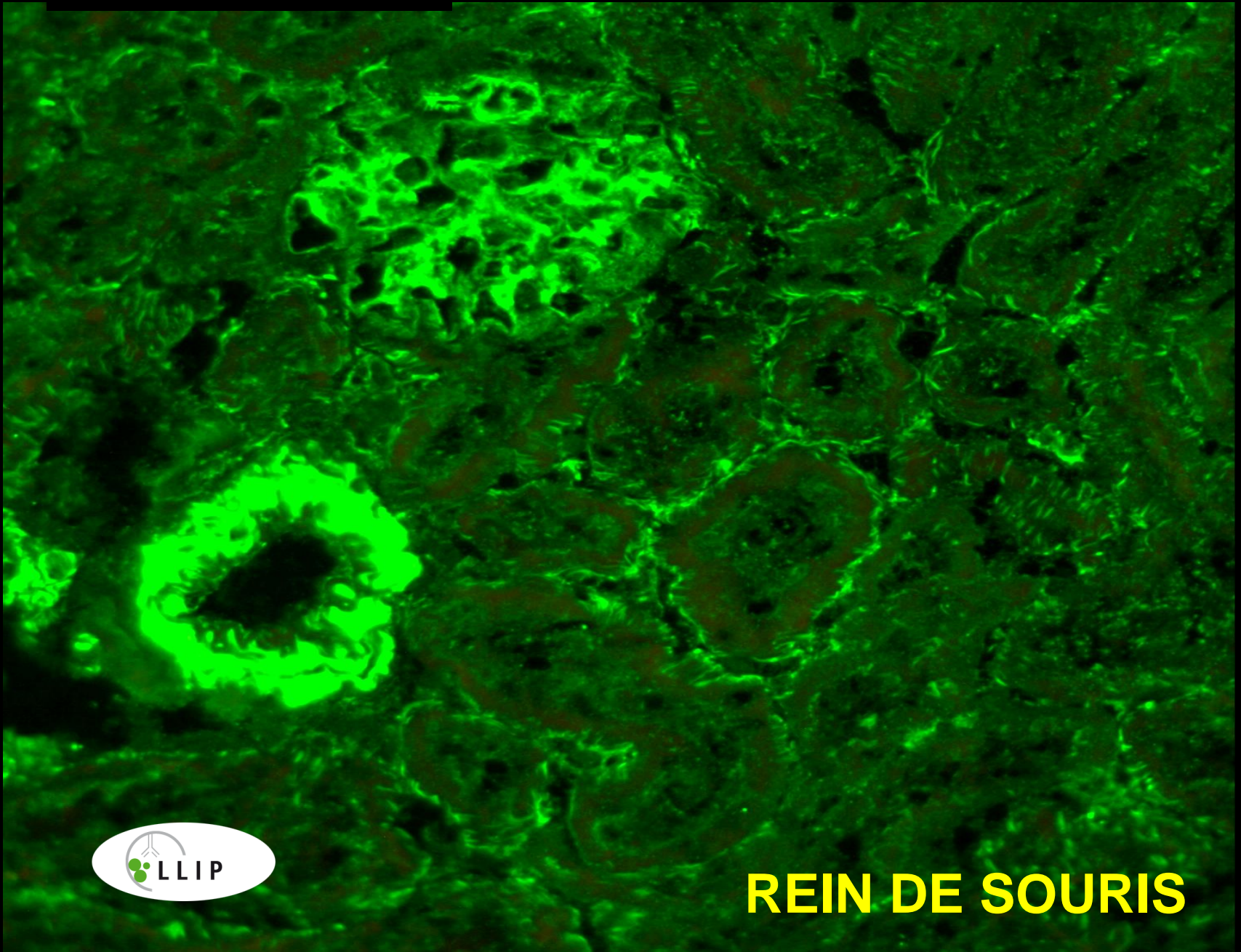


**NEURONES MYENTERIQUES**  
**Cytoplasme**

# ANTI-MUSCLE LISSE

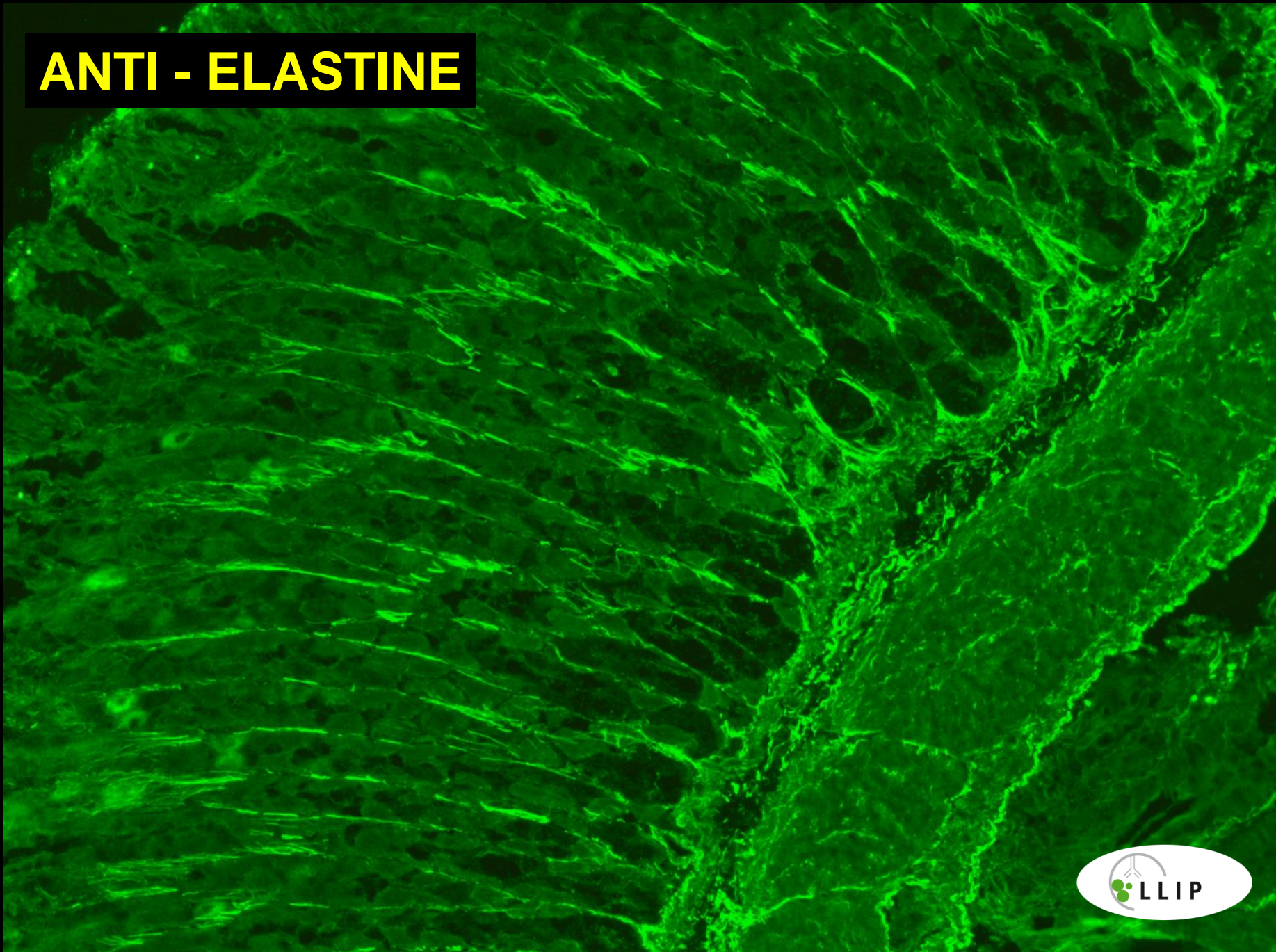


# ANTI - ACTINE



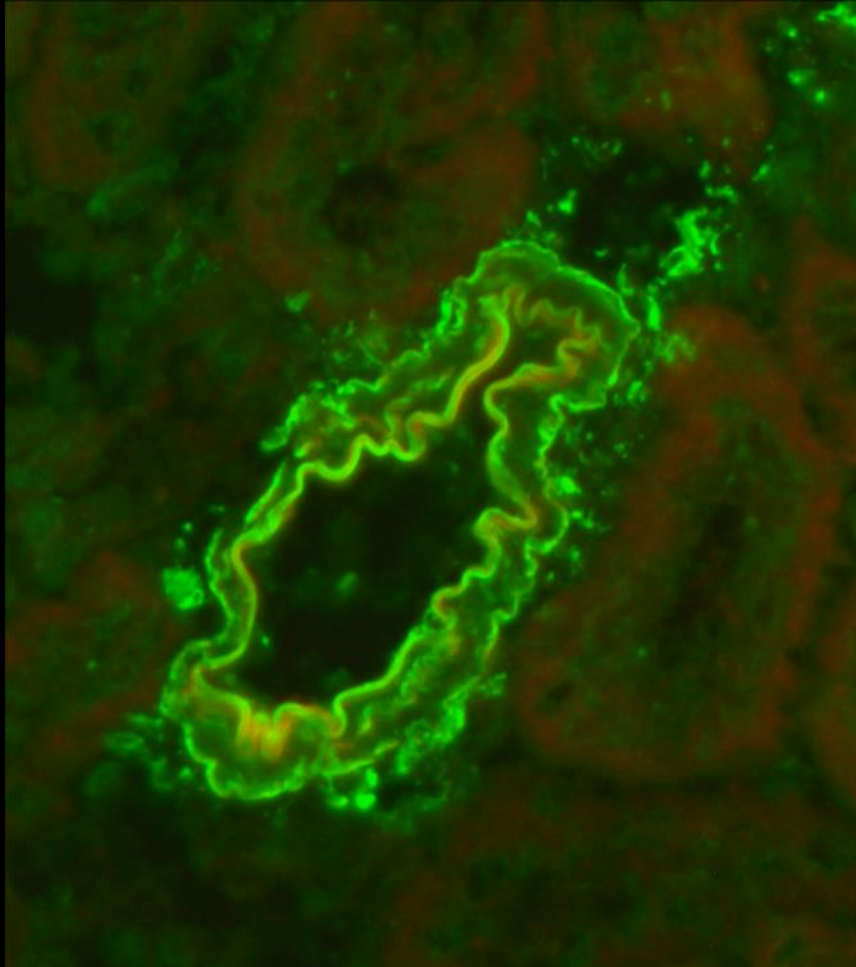
**REIN DE SOURIS**

# ANTI - ELASTINE

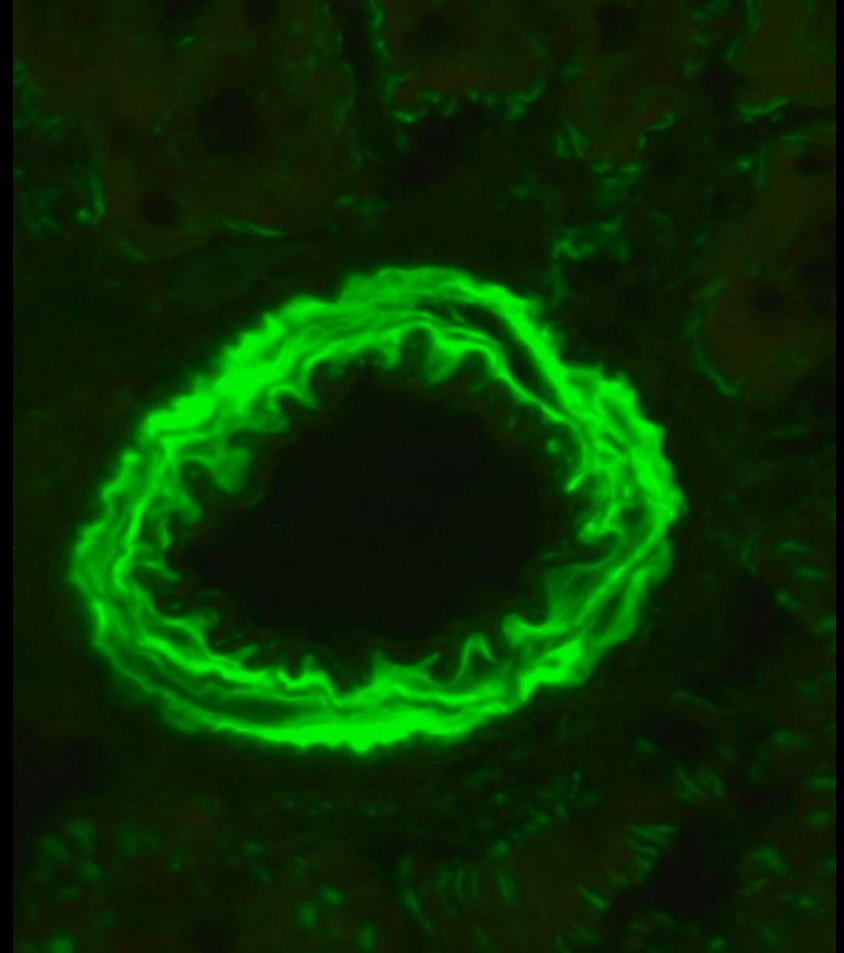


# ANTI - ELASTINE

# ANTI - ELASTINE

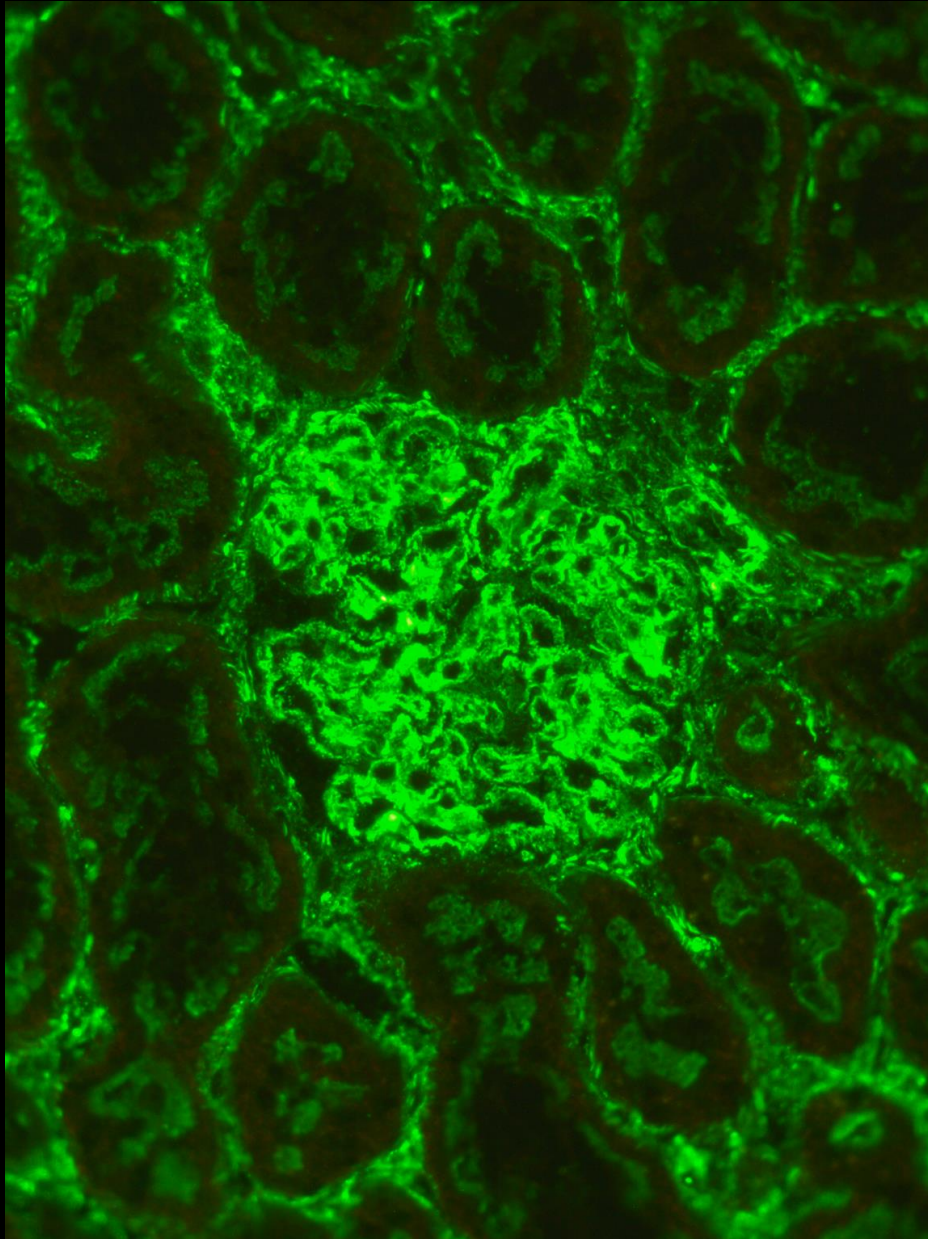


# ANTI - ACTINE

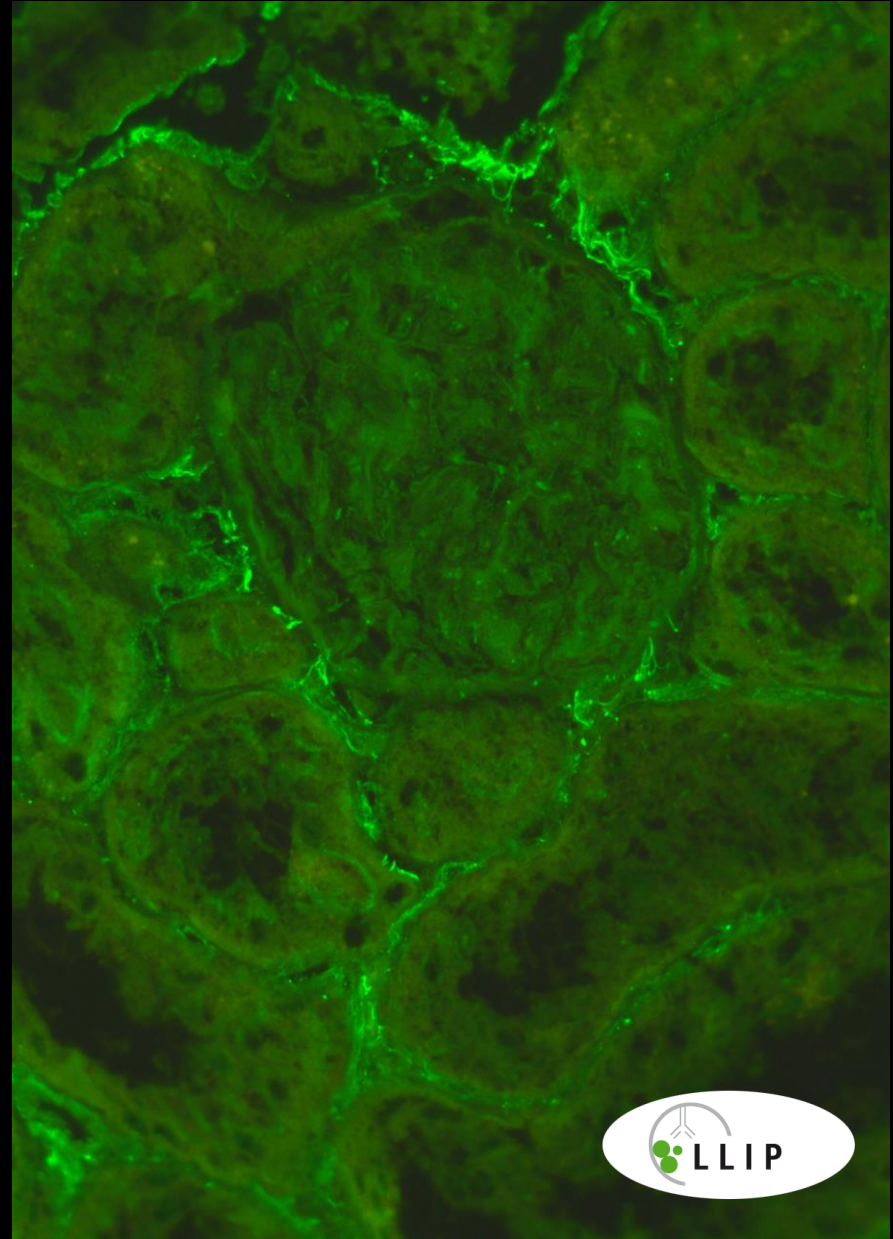




# ANTI -ACTINE

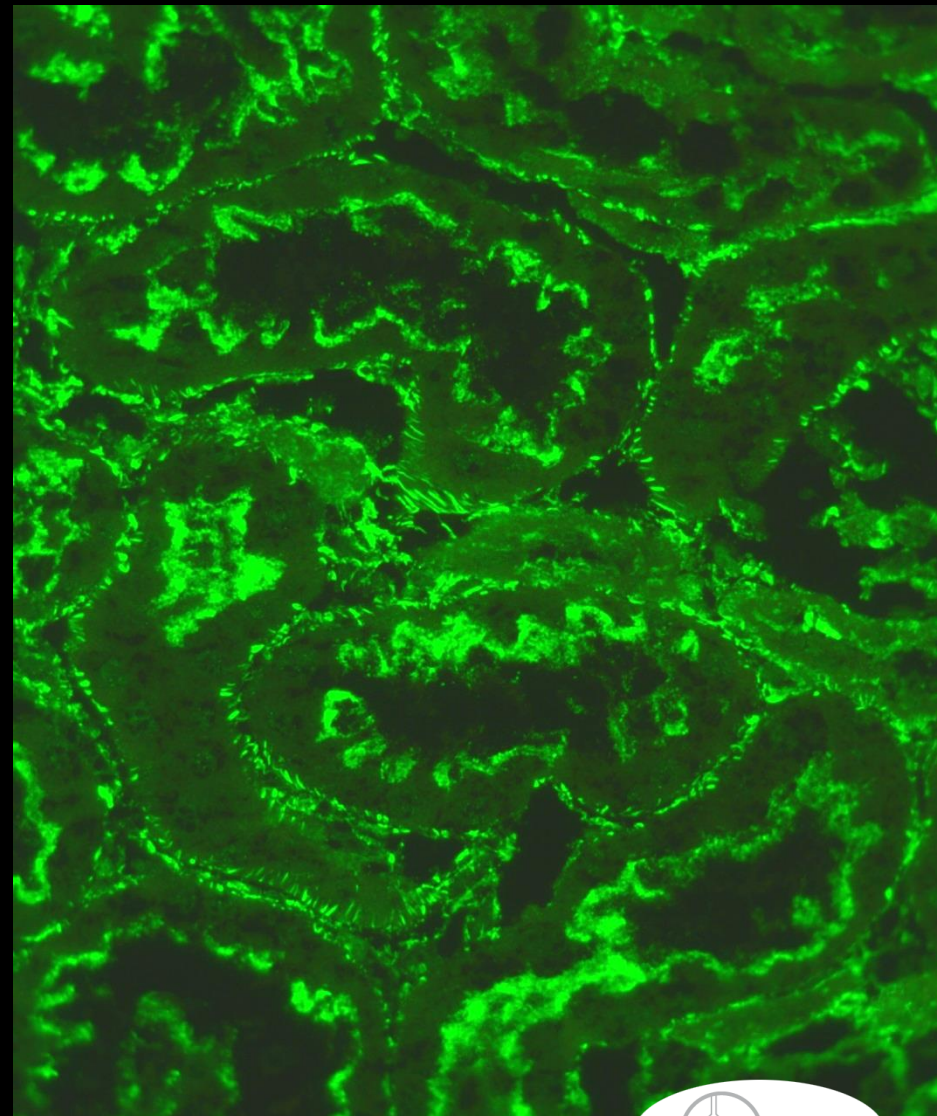
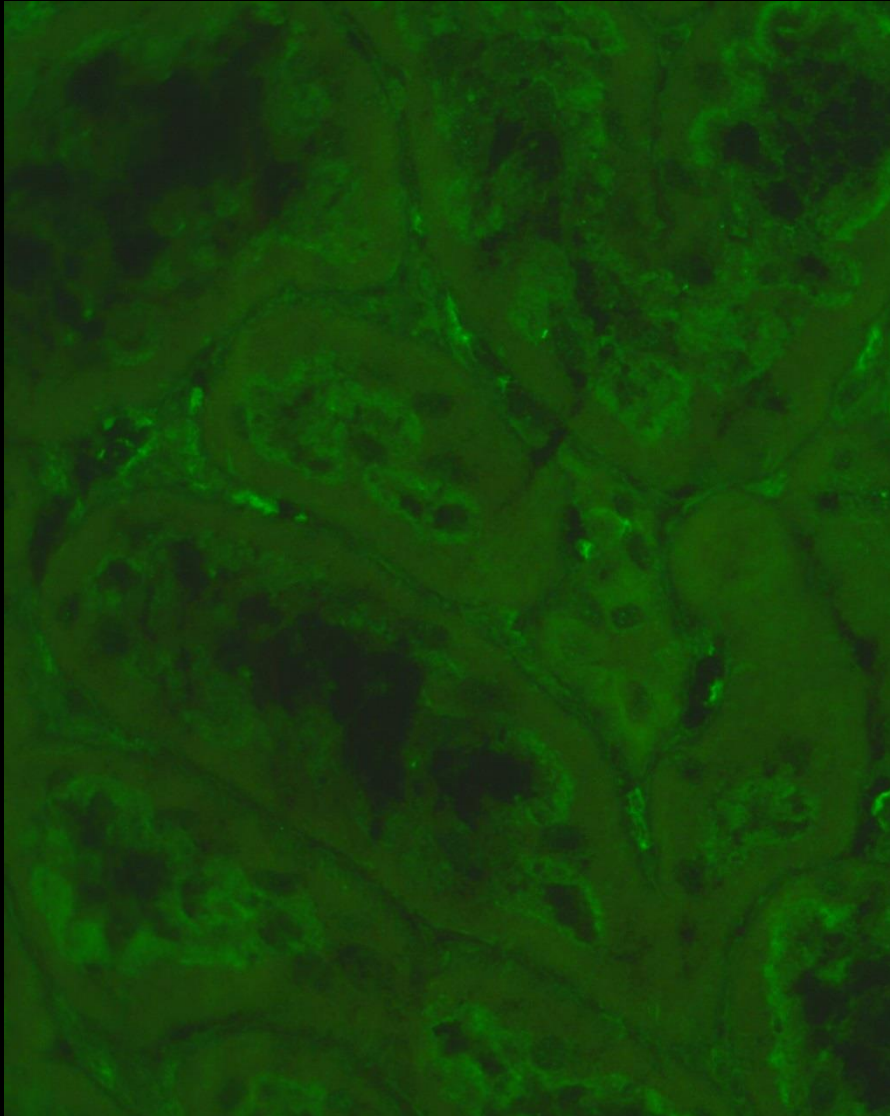


# ANTI - ELASTINE



**ANTI - ELASTINE**

**ANTI - ACTINE**



**REIN DE SOURIS**

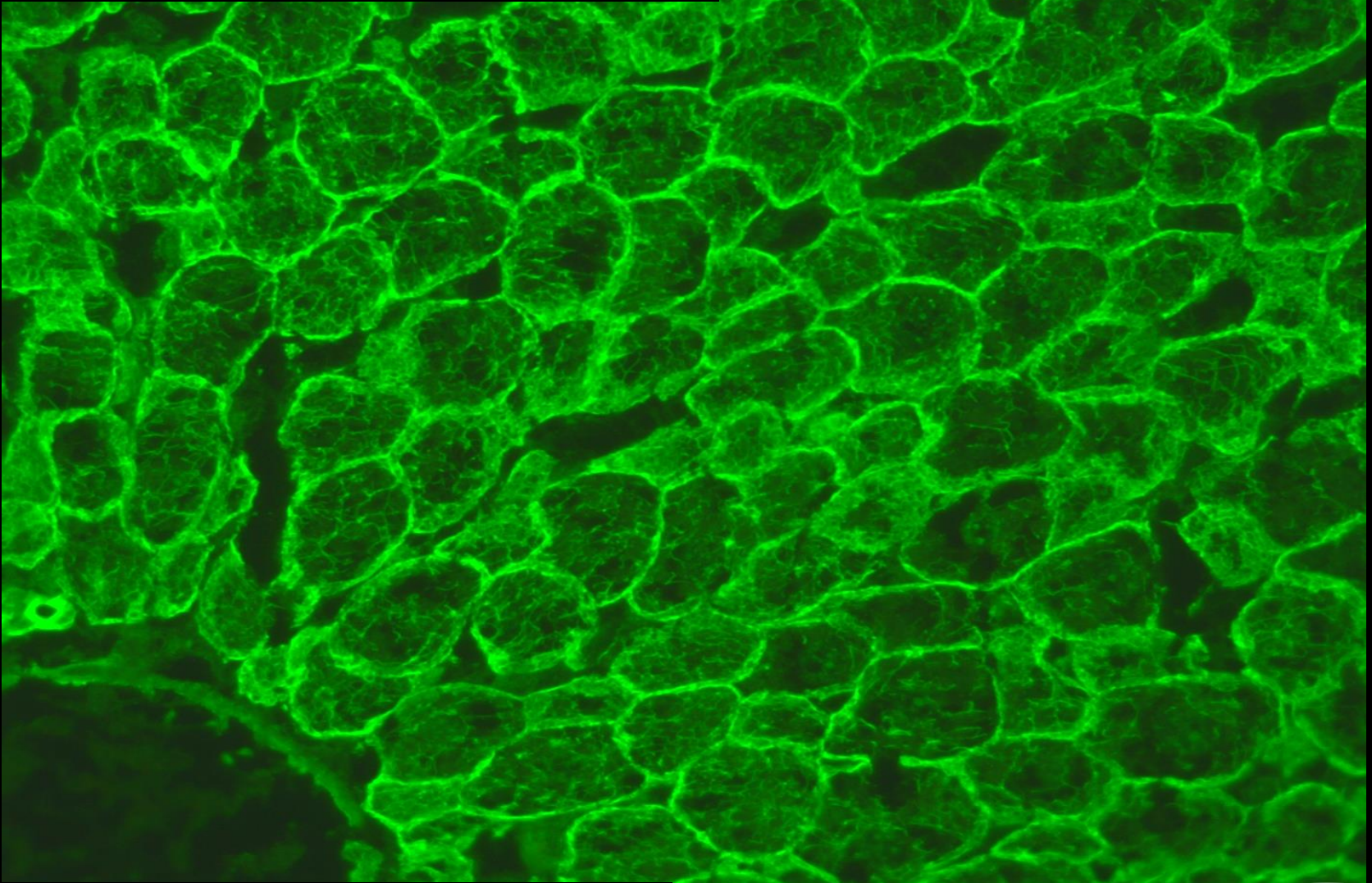


**ANTI-VIMENTINE**

**ESTOMAC DE SOURIS**



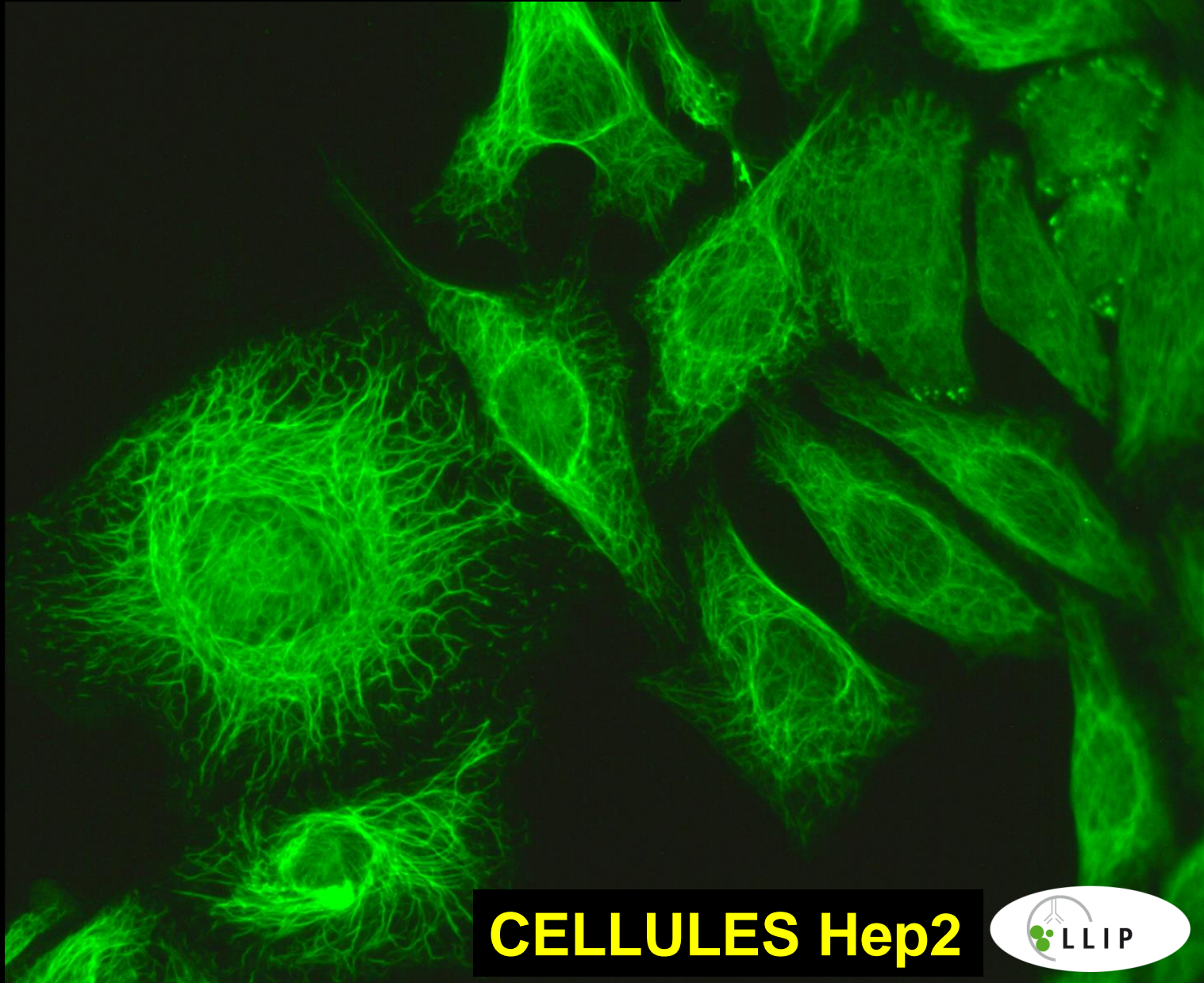
**ANTI-VIMENTINE**



**FOIE DE SOURIS**



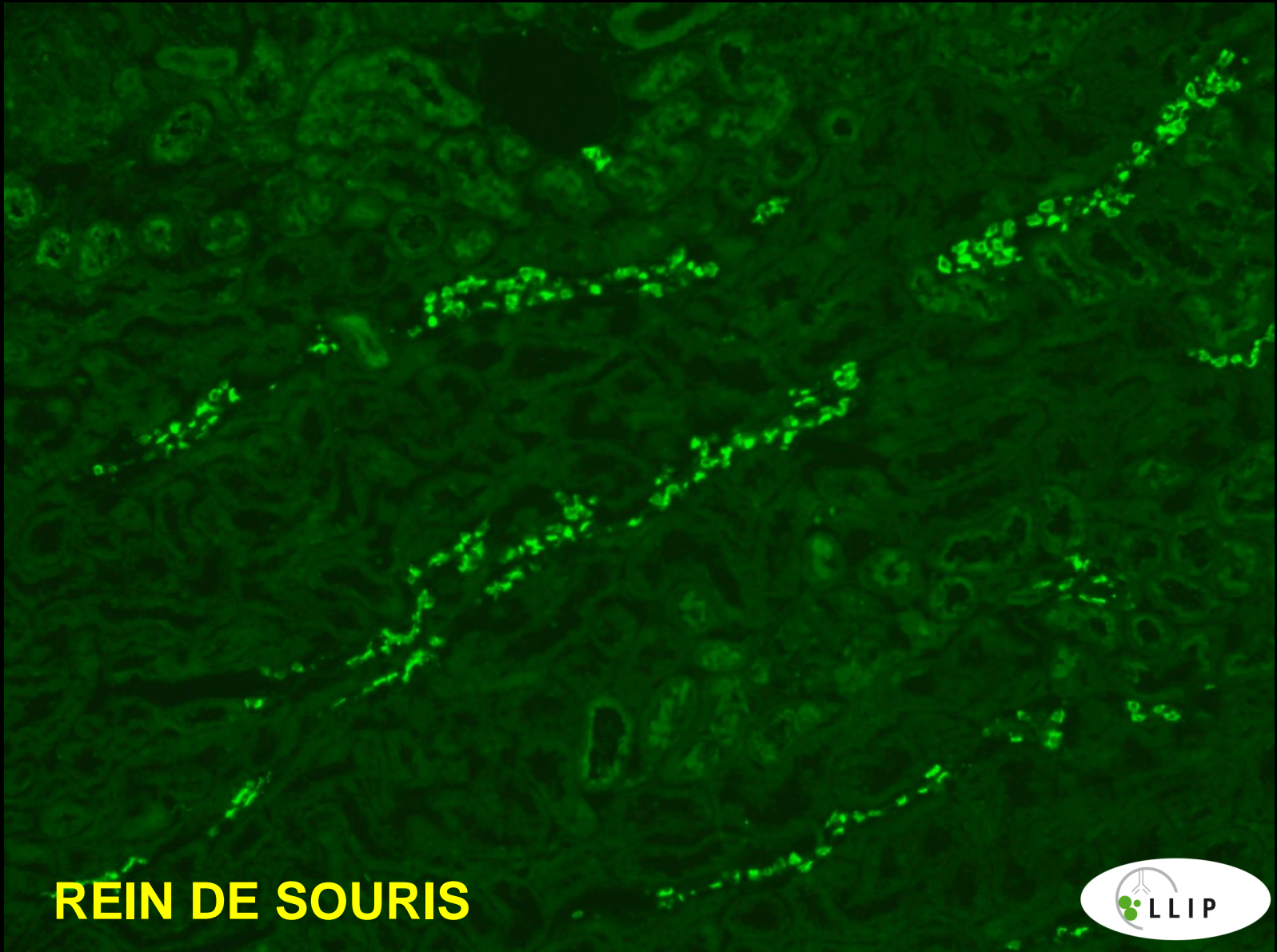
# ANTI-VIMENTINE



**CELLULES Hep2**



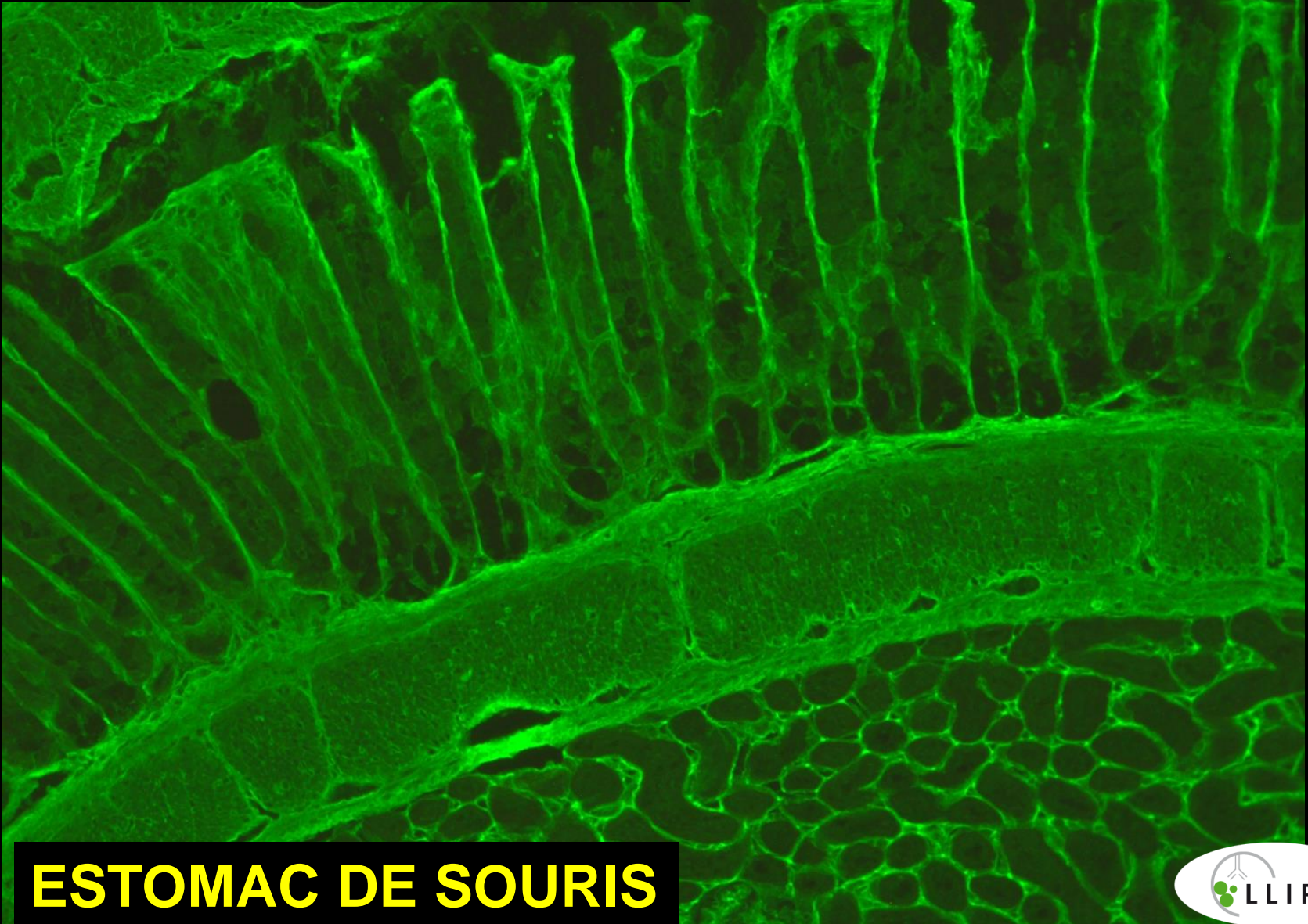
# ANTICORPS ANTI - TUBES COLLECTEURS



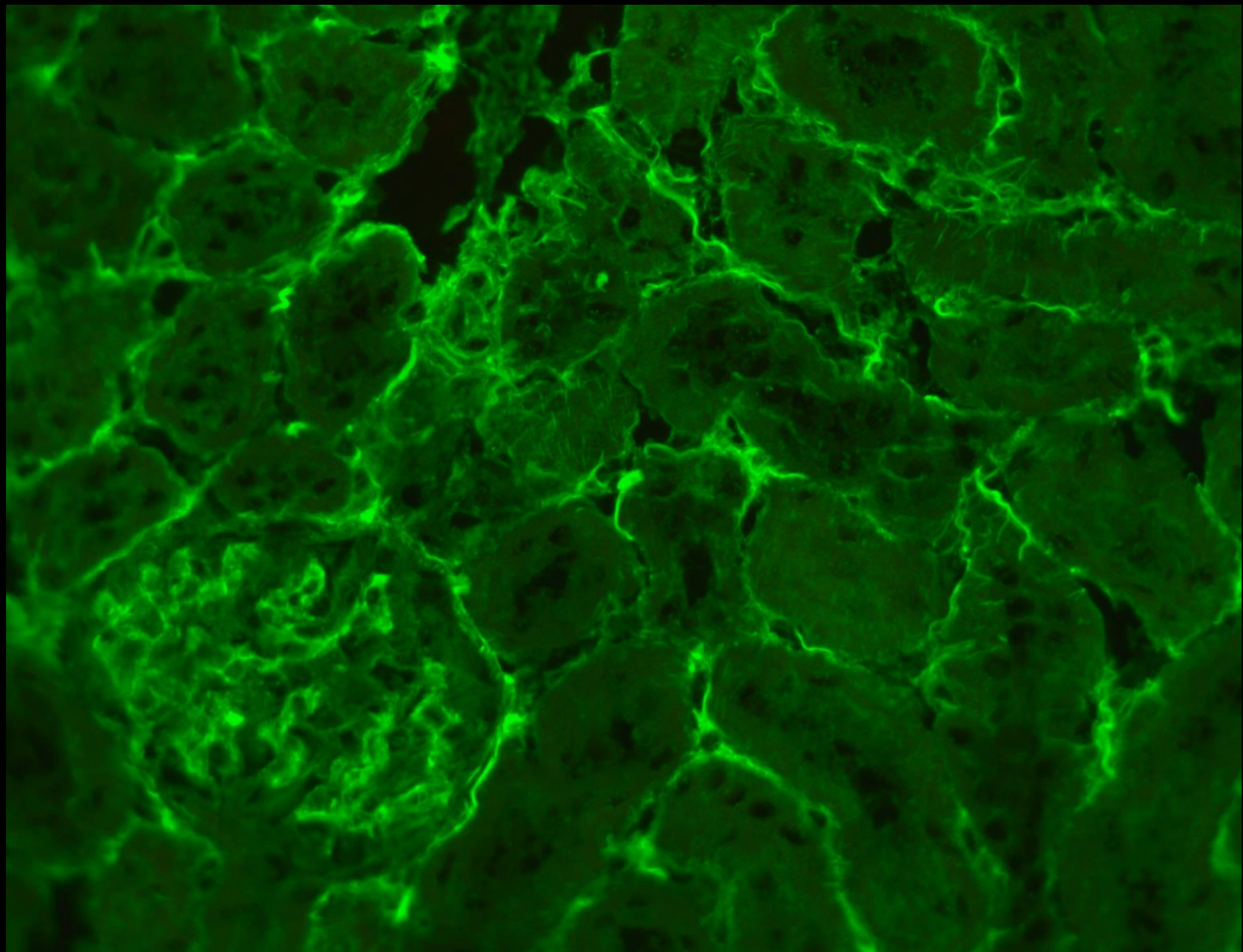
**REIN DE SOURIS**



# ANTI-RETICULINE



**ESTOMAC DE SOURIS**





**ANTI-RETICULINE**

**FOIE DE SOURIS**

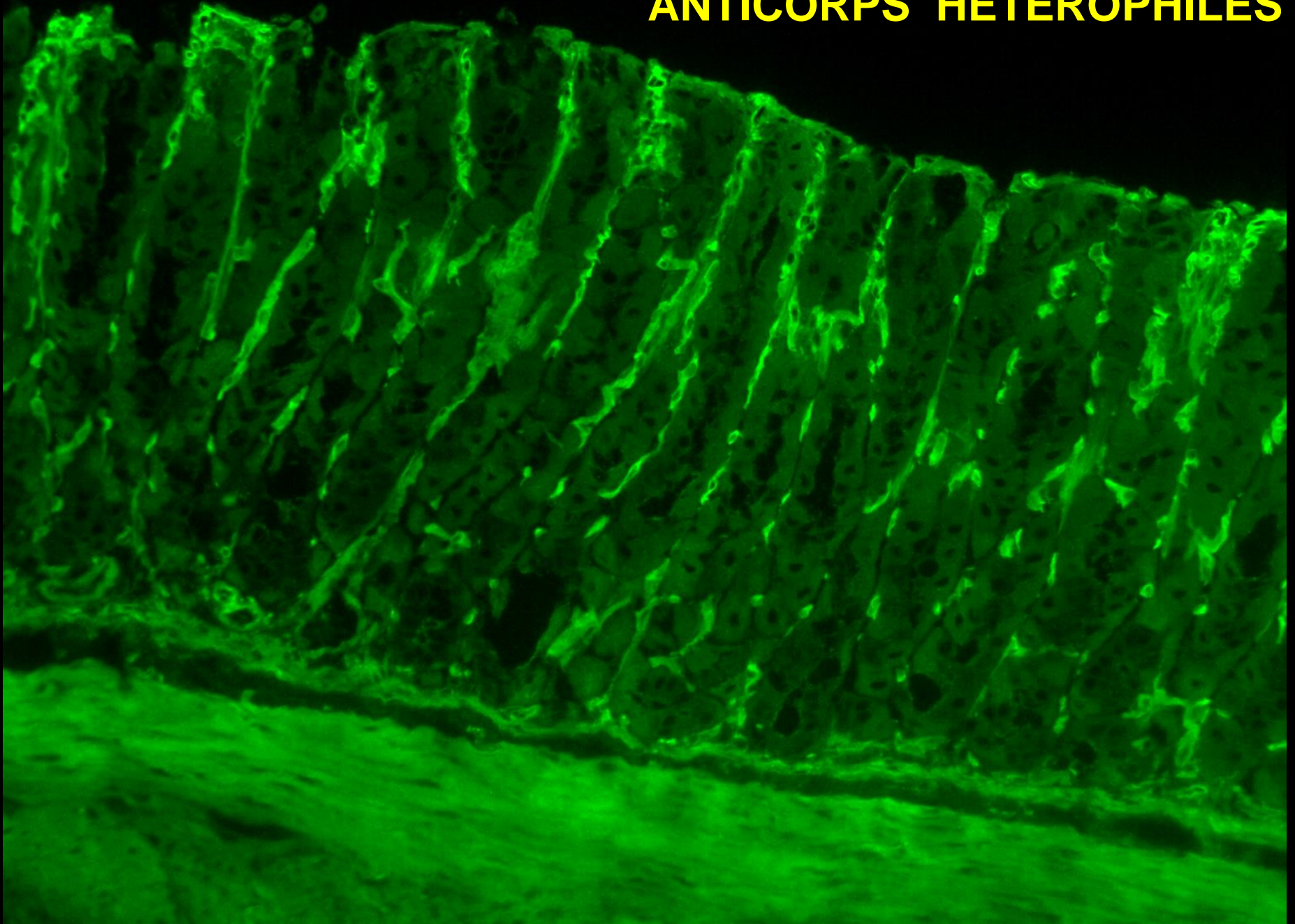


**RETICULIN**

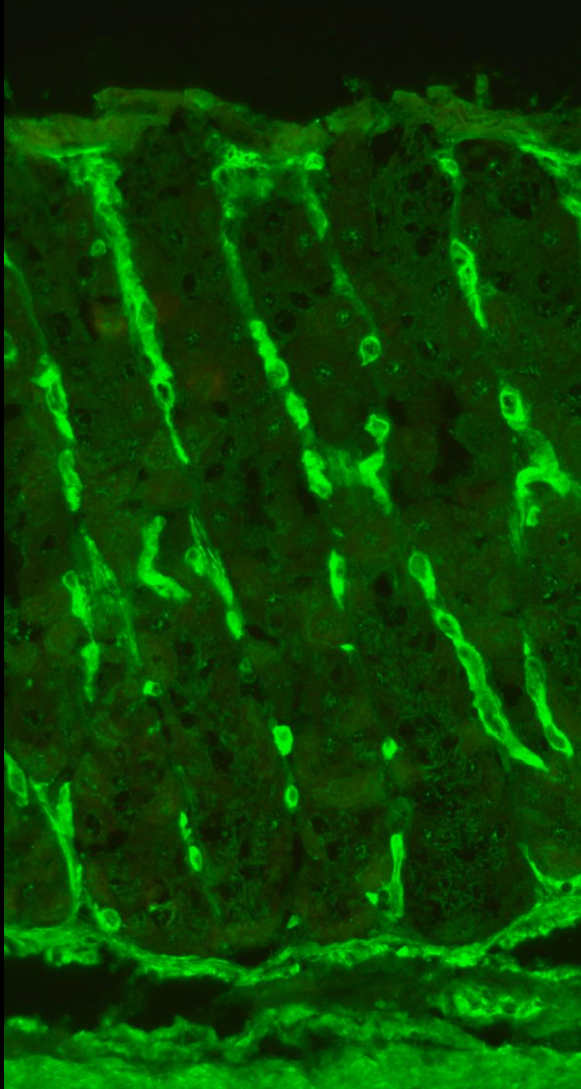
**ENDOMYSIUM**  
***MONKEY ESOPHAGUS***



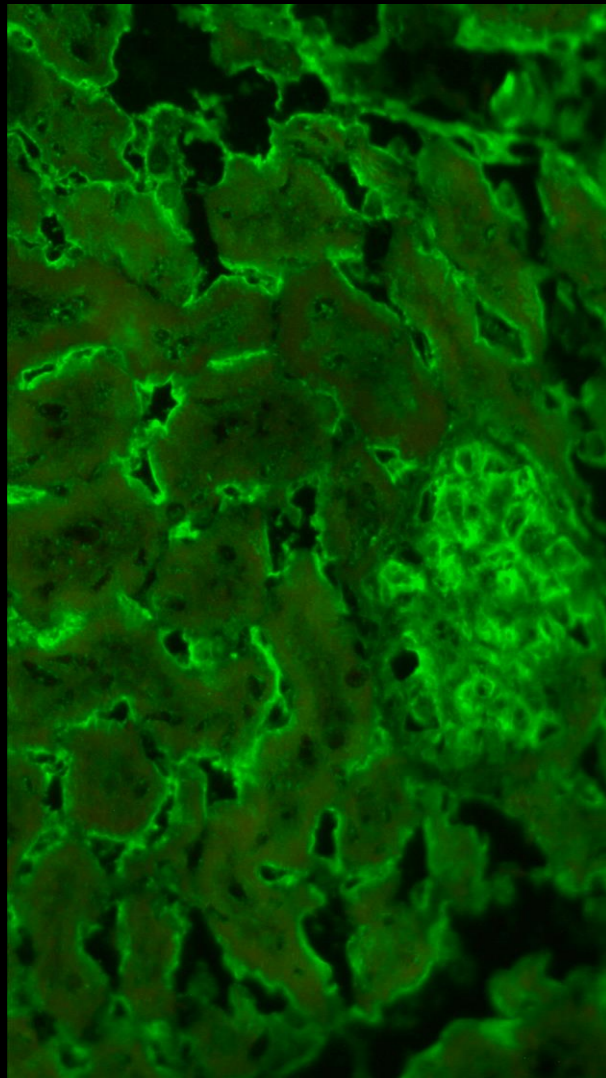
# ANTICORPS HETEROPHILES



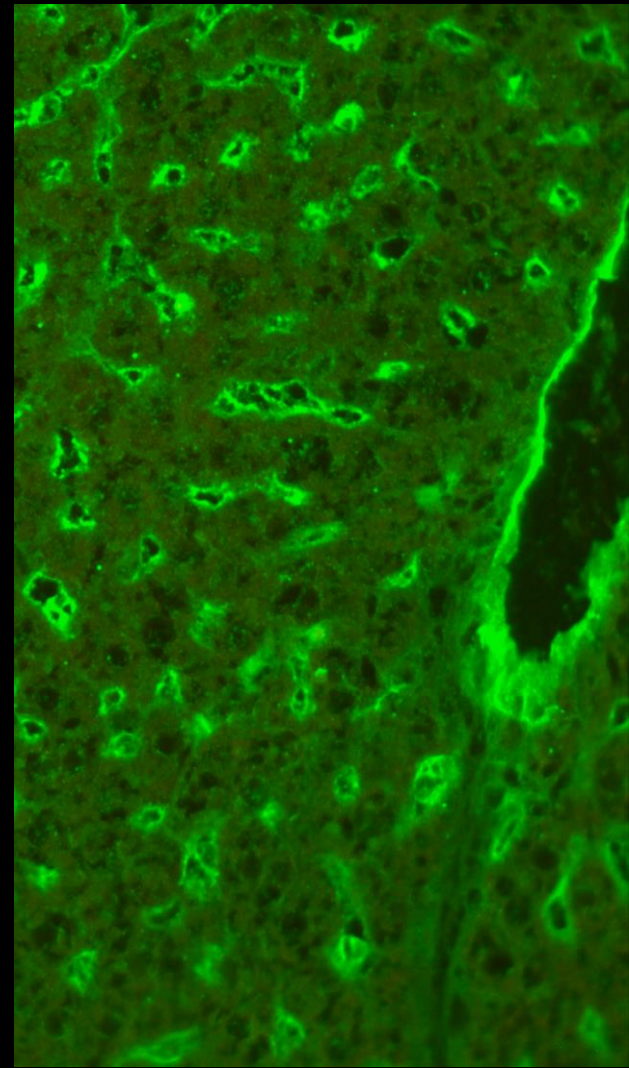
# ANTICORPS HETEROPHILES



**ESTOMAC DE SOURIS**



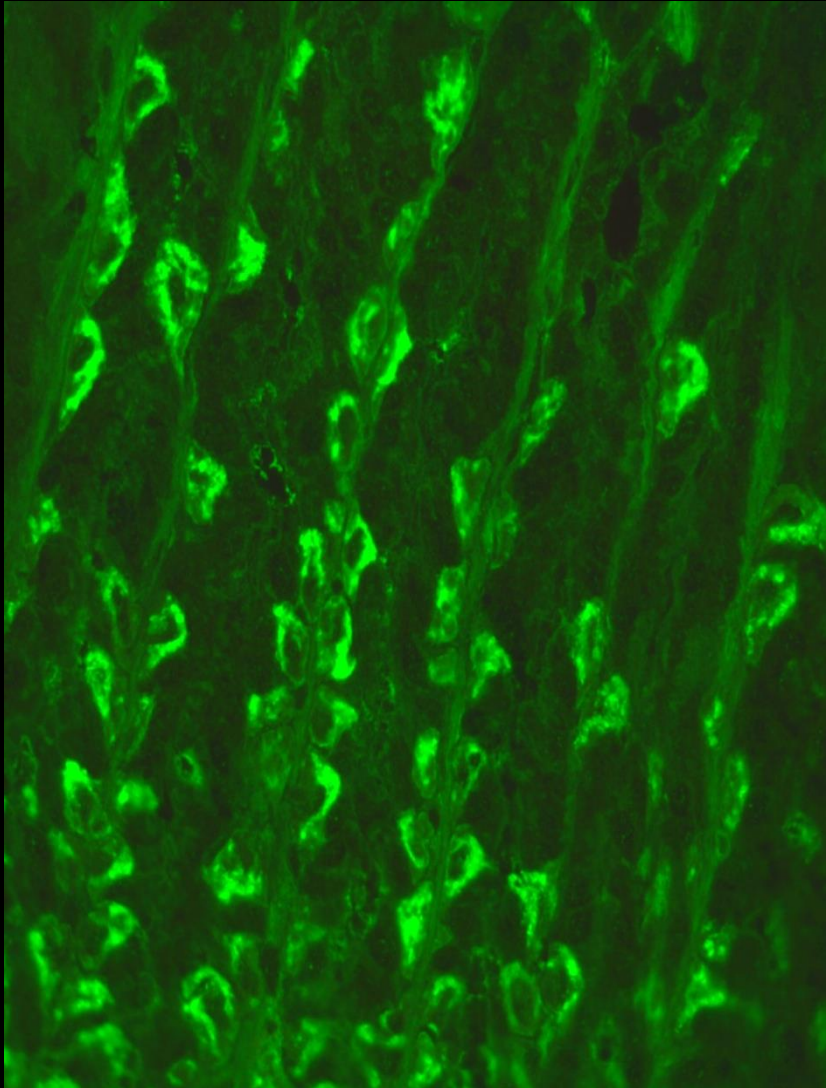
**REIN DE SOURIS**



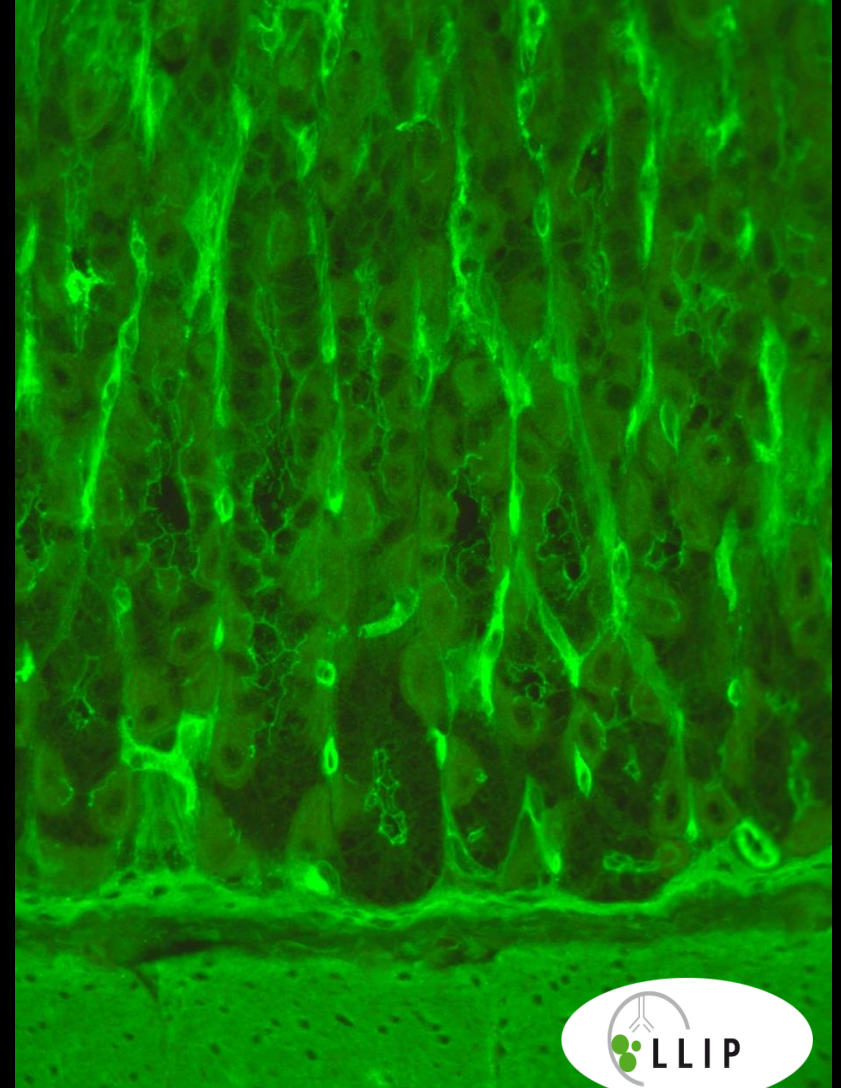
**FOIE DE SOURIS**

# ANTICORPS HETEROPHILES

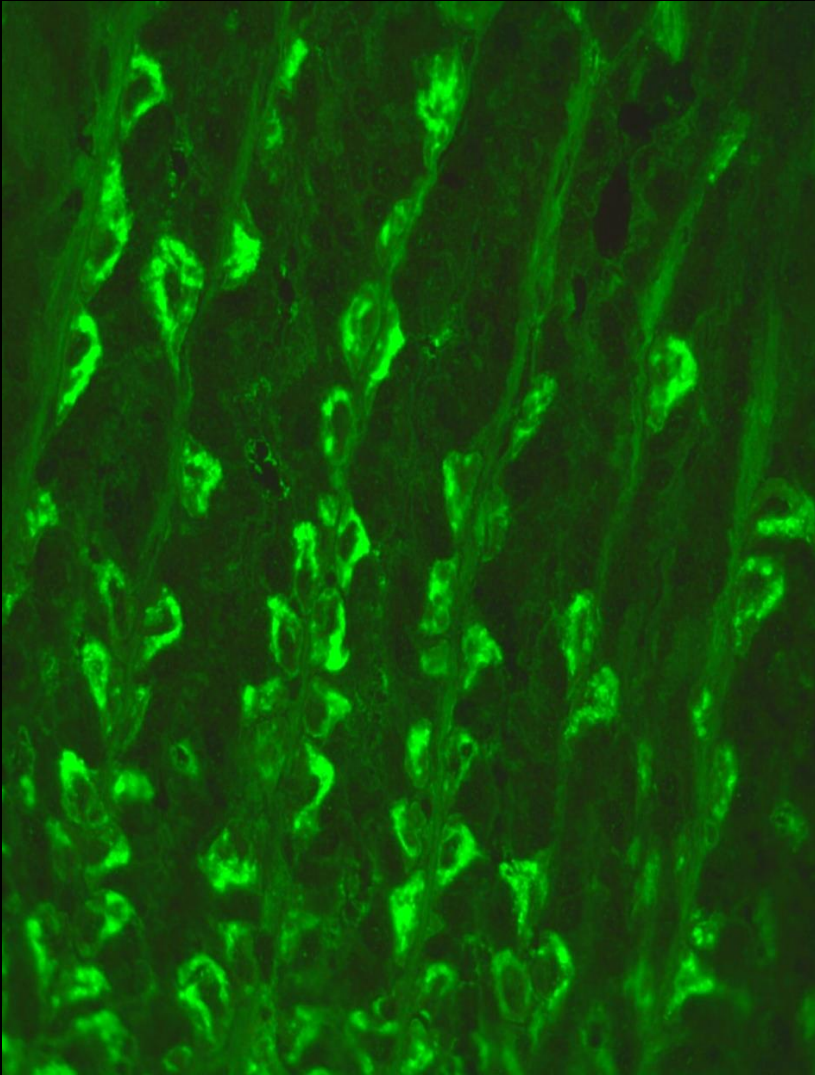
ESTOMAC DE RAT



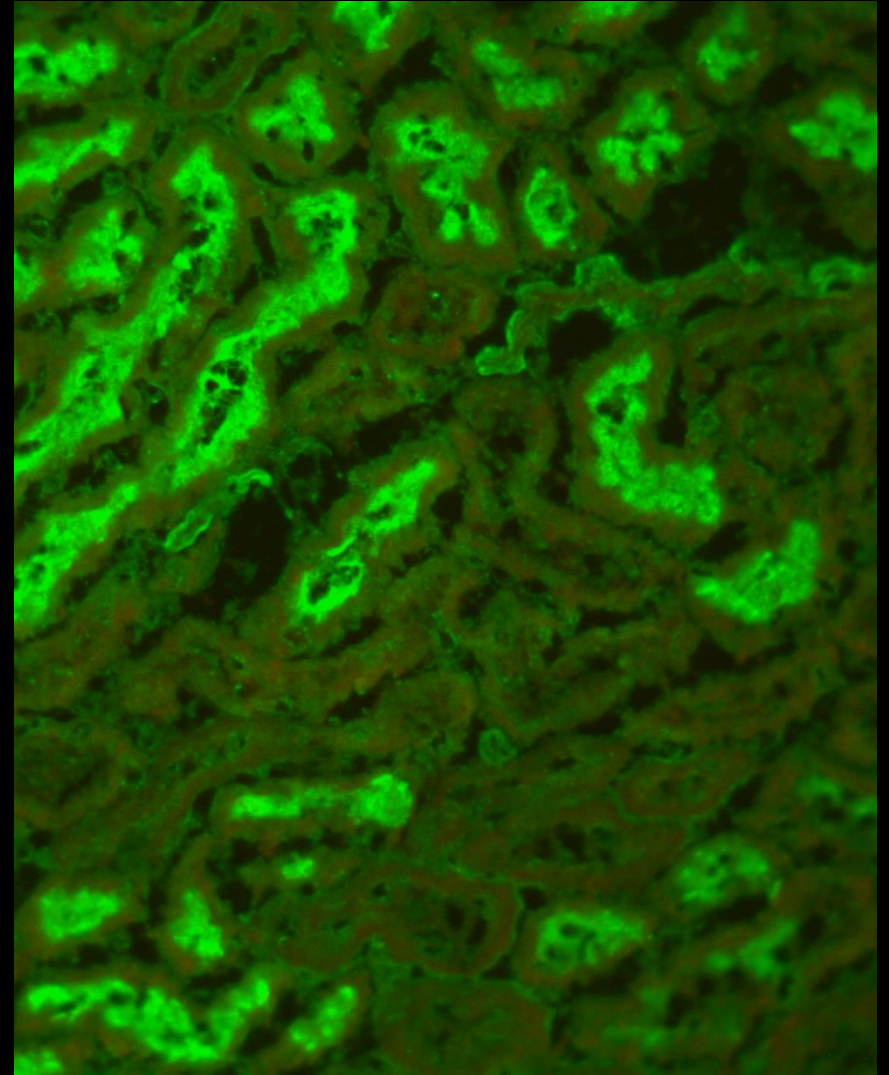
ESTOMAC DE SOURIS



# ANTICORPS HETEROPHILES



**ESTOMAC DE RAT**



**REIN DE RAT**