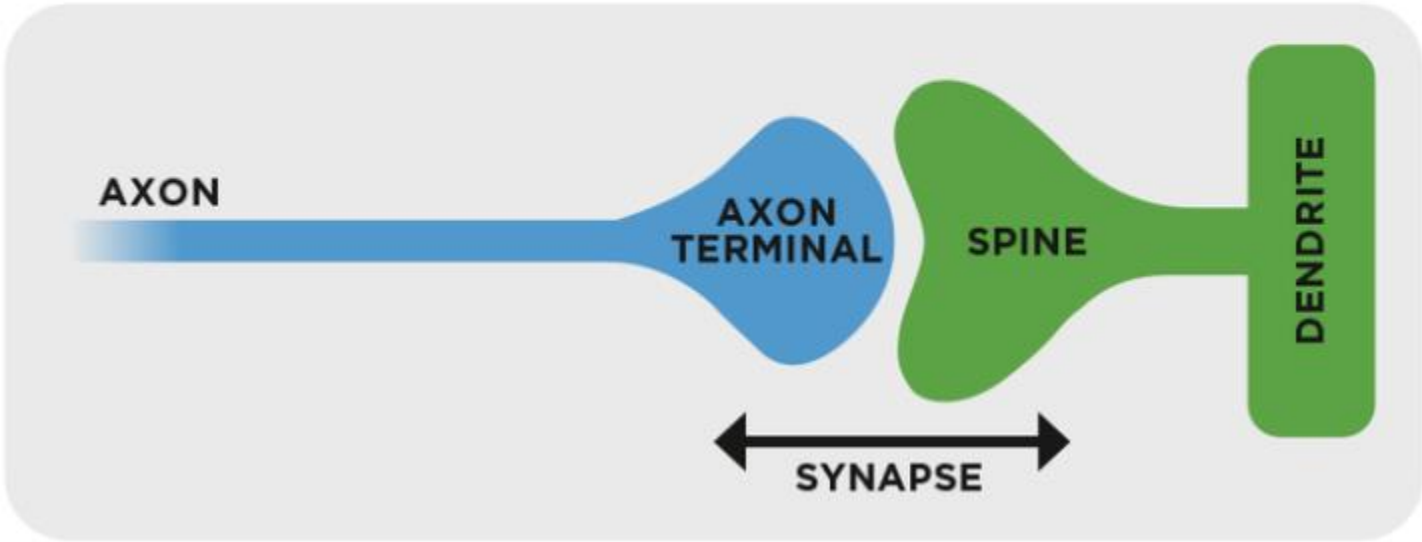


NEW ANTINEURONAL ANTIBODIES

2019-2021

Anti-

RGS8	Regulator of G -protein signaling
AP3B2	Adaptor Protein-3B2
Rab6A/6B	Small Rab-GTPases 6A/B
KLHL11	Kelch-Like Protein 11
TRIM9 / TRIM67	Tripartite motif containing protein
Cavα2δ	Voltage gated Calcium Channel- α 2 δ subun.
GluK2	Glutamate Kainate Receptor
LUZP4	Leucine Zipper 4 protein
GRAF1 (ARHGAP26)	GTPase Regulator Focal Adhesion Kinase
CRMP2	Collapsin Response Mediator 2
DEBRIN	Debrin
ARGONAUTE	<i>Argonaute 1/2</i>



NEW ANTINEURONAL ANTIBODIES

2019-2021

Anti-

NEUROLOGIC MANIFESTATIONS ~~C~~CANCER

RGS8	Cerebellar Syndrome	Lymphoma
AP3B2	Limbic Encephalitis	Renal (1)
Rab6A/6B	Cerebellar Ataxia	0 (Sjögren)
KLHL11	Cochleovestibulopathy	Testicular
TRIM9 / TRIM67	Cerebellar Ataxia	Lung
Cavα2δ	Memory Loss, Psychiatric Man.	Neuroendocrine
GluK2	Acute Encephalitis	0
LUZP4	Rhombencephalitis	Testicular
GRAF1 (ARHGAP26)	Cerebellar Ataxia	Gastric, Prostata, Breast Ovarian, Lung, Nasopharynx
CRMP2	Encephalitis	0
DEBRIN	Encephalitis-<i>Epilepsy (9/680)</i>	0
ARGONAUTE	Peripheral Neuropathy	0

NEW ANTINEURONAL ANTIBODIES

Anti-

IF CEREBELLUM

RGS8

Purkinje Cells/Dendrites

AP3B2

Interneurons (Neuropil)

Rab6A/6B

Purkinje Cells/Interneurons

KLHL11

Neurons Molecular Layer

TRIM9 / TRIM67

Purkinje Cells (Dendrites)

Cav α 2 δ

Interneurons (Neuropil)

GluK2

Molecular Layer

LUZP4

No Aspect

GRAF1

Purkinje Cells, Molecular Layer

CRMP2

Purkinje Cells

Debrin

Molecular Layer

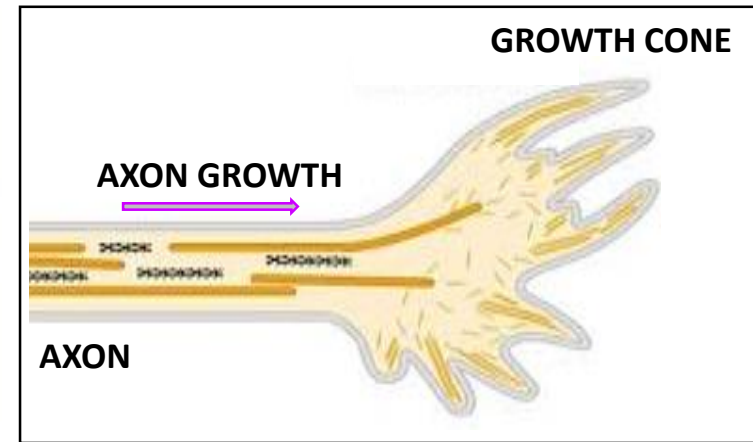
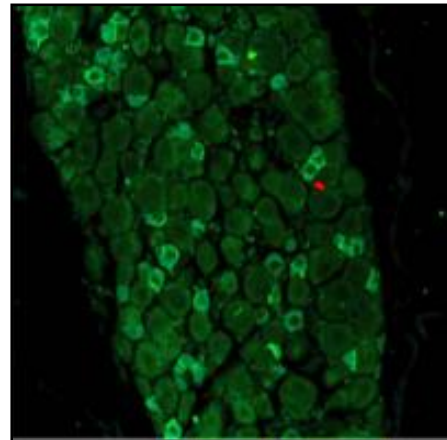
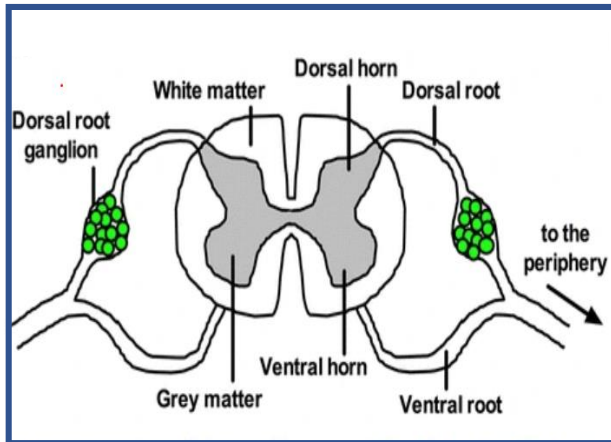
ARGONAUTE

Granular Layer

AUTOANTIBODIES TO PURKINJE CELLS

	Somata	Dendrite	Axon	Gran.Layer
Yo	+	-	-	-
PCA2/NAP1B	+	+	-	-
Tr/DNER	+	+	-	-
NEUROCHONDRIN	+	+	-	-
HOMER-3	+	+	+	-
AP3B2	+	-	-	+
PKCY	+	+	+	-
mGLUR1 / R5	+	+	-	-
ITPR1	+	+	+	-
ARHGAP26 (GRAF1)	+	+	+	-
TRIM 9/67	+	+	-	-
Rab6A/B	+	-	-	+
CRMP2	+	-	-	-

AUTOANTIBODIES TO THE SOMATOSENSORY NERVOUS SYSTEM



**AUTOANTIBODIES
TO DORSAL ROOT
GANGLION**

**AUTOANTIBODIES
TO
SMALL C-FIBERS
SMALL
UNMYELINATED
NEUROINS**

**AUTOANTIBODIES
BOUND TO
MOLECULES GUIDING
AXONAL GROWTH**

AUTOANTIBODIES

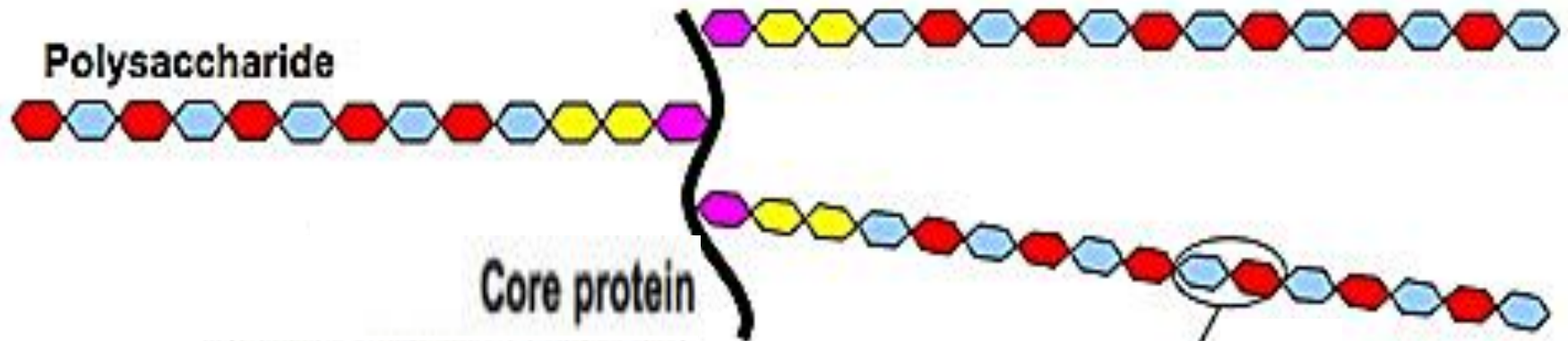
CHRONIC INFLAMMATORY PAINFUL SENSORY NEUROPATHY

TS-HDS **Trisulfated-Heparin-Disaccharide
IdoA2S-GlcNS-6S (IgM)**

PLEXIN D1 **Receptor of Semaphorin (IgG2)**

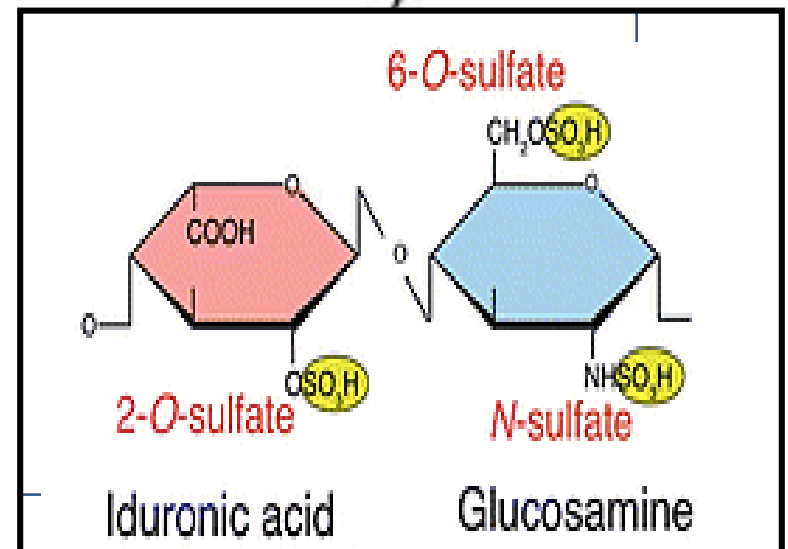
FGFR3 **Fibroblast Growth Factor Receptor 3**

Heparan Sulfate (HS) Proteoglycan



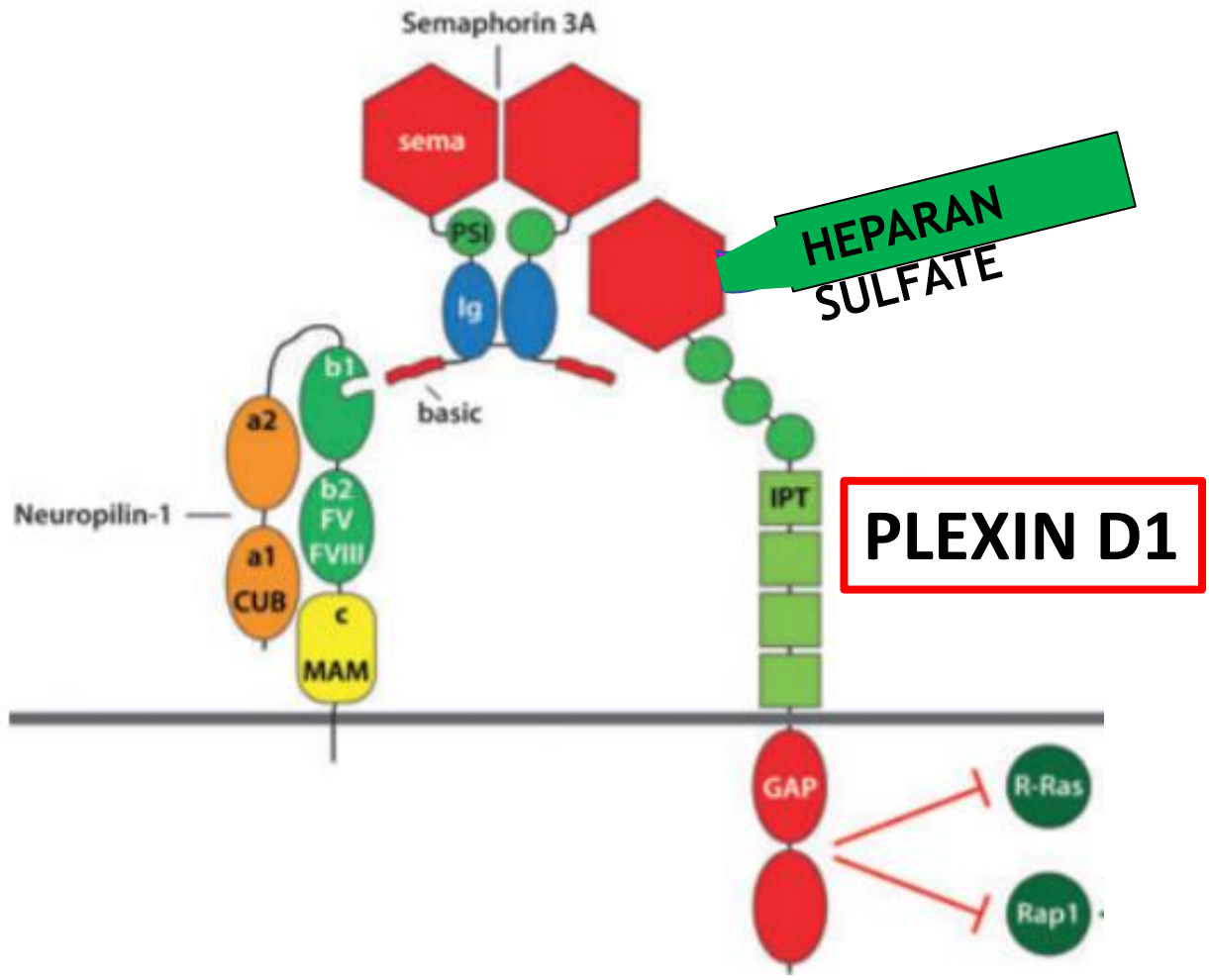
TS-HDS IdoA-2S-GlcNS-6S

Antigen For ELISA



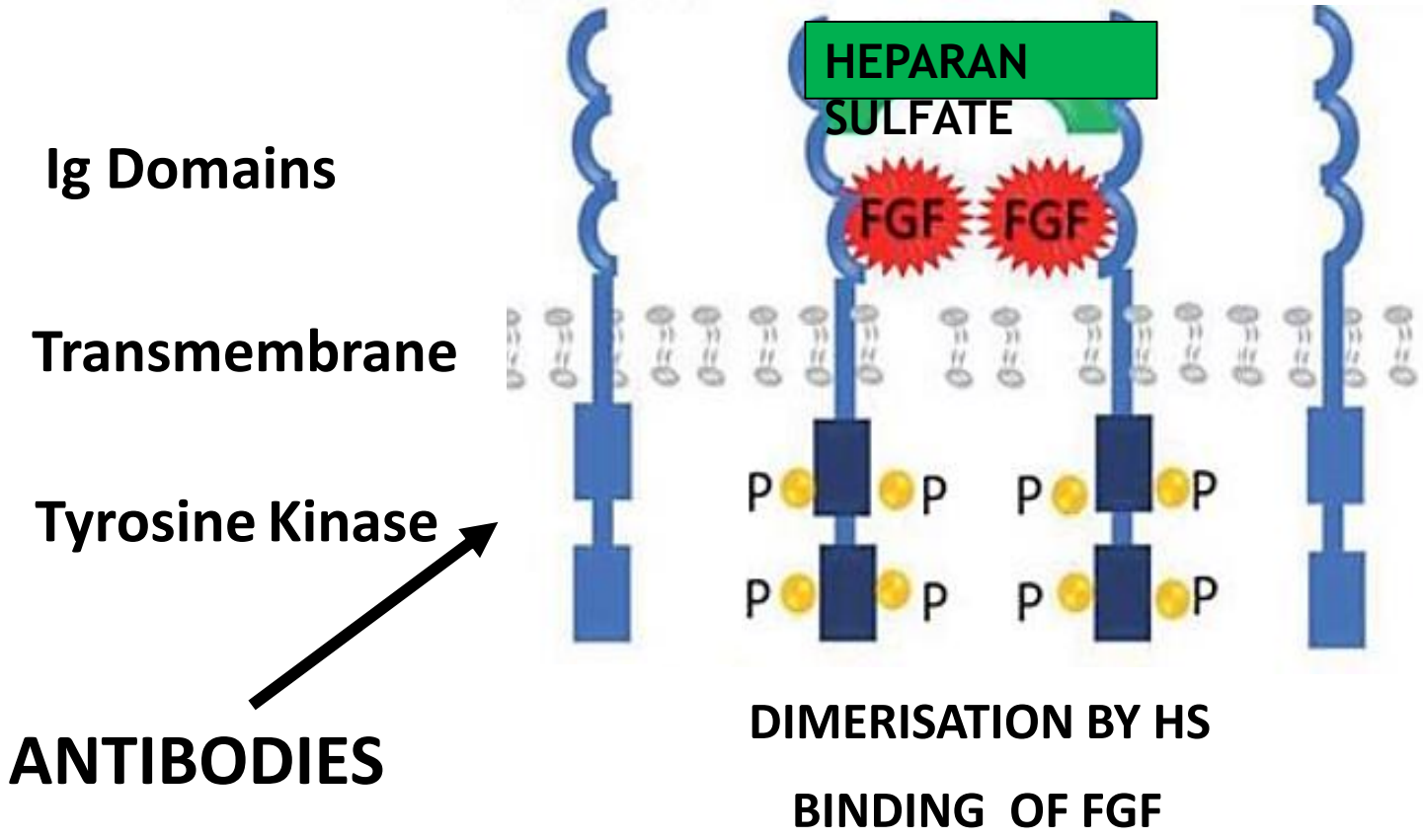
PLEXIN D1

RECEPTOR of Semaphorin



FGFR3

RECEPTOR of Fibroblast Growth Factor



CHRONIC INFLAMMATORY PAINFULL SENSORY NEUROPATHY

Painfull Distal Sensory Neuropathy

Burning/Tingly Pains Lower Limbs

Gait Instability

Trigeminal Neuralgia

Headaches

Diplopia

Autonomic Symptoms

Fibromyalgia

AUTOANTIBODIES

SMALL FIBER NEUROPATHIES

62 Patients

AUTOANTIBODIES : 25 (40%)



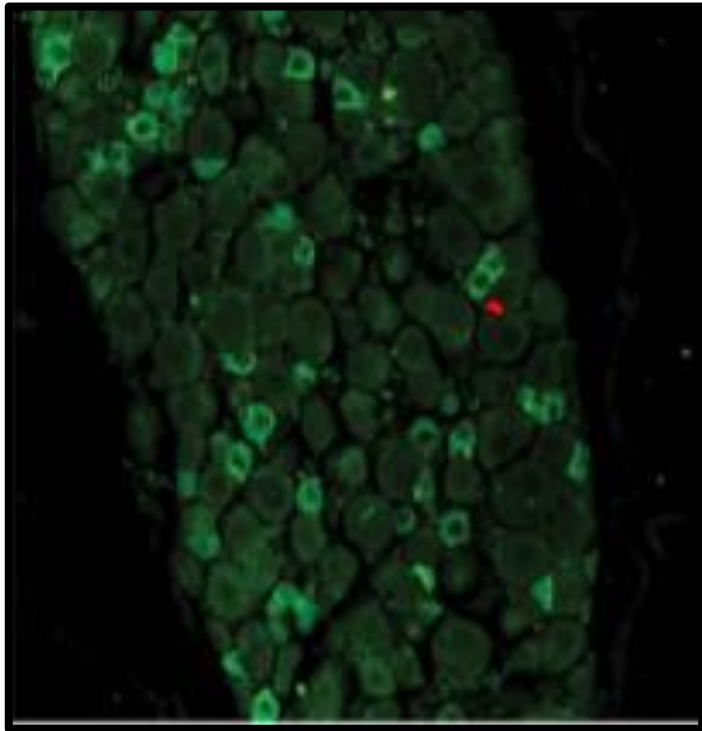
TS-HDS : 64 %

FGFR3 : 28 %

PLEXIN D1 : 20 %

TS-HDS+FGFR3 : 12 %

ANTIBODIES TO DORSAL ROOT GANGLION



STAINING OF ANTIBODIES TO PLEXIN-D1
ON DORSAL ROOT GANGLION

Small c-Fiber Neurons

Specific Marker of c-Neurons

L2895 ▶ Sigma-Aldrich.

Lectin from *Bandeiraea simplicifolia*

Isolectin B₄ (BSI-B₄), FITC conjugate, lyophilized powder

Fujil

.Neurol.Neuroimmunol.Neuroinflamm.

2020

(IgG2)