

ANTI- PR3 DANS LA RECTOCOLITE HEMORRAGIQUE

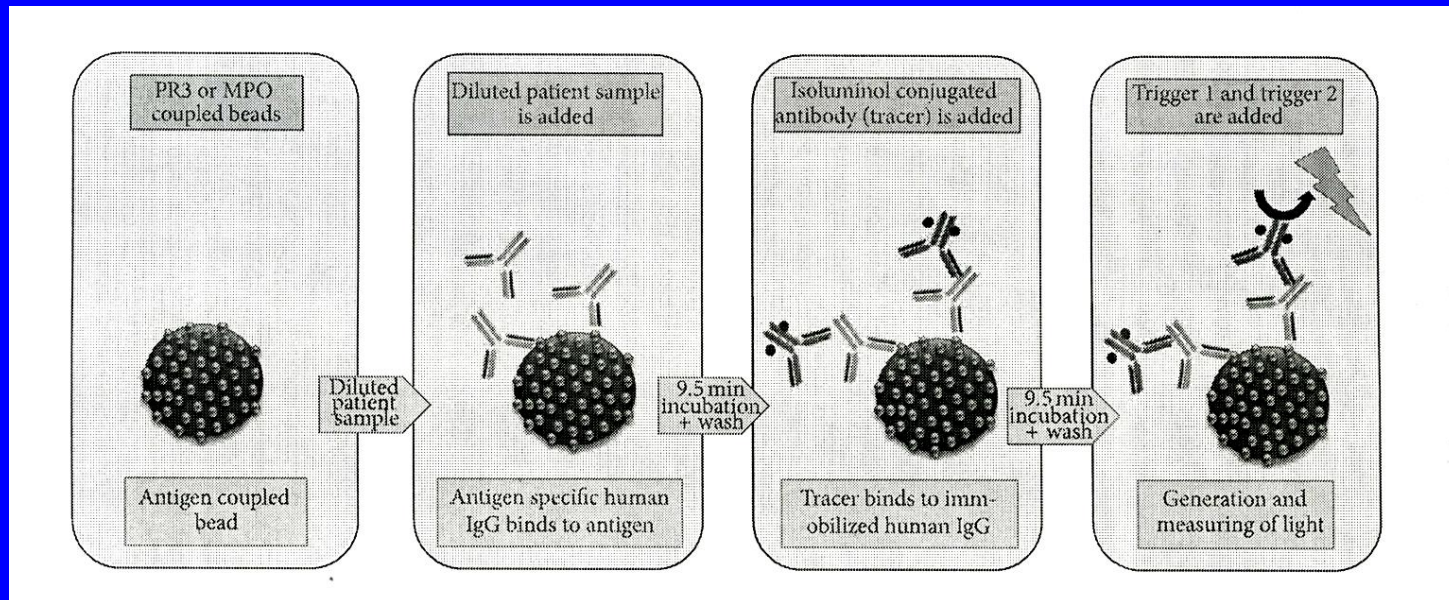
***R.L.HUMBEL
GEAI
janvier 2015***

Clin Rev Allergy Immunol. 2013 Aug;45(1):109-16. doi: 10.1007/s12016-012-8349-4.

Presence of anti-proteinase 3 antineutrophil cytoplasmic antibodies (anti-PR3 ANCA) as serologic markers in inflammatory bowel disease.

Arias-Loste MT¹, Bonilla G, Moraleja I, Mahler M, Mieses MA, Castro B, Rivero M, Crespo J, López-Hoyos M.

Ulcerative Colitis : 52,1% (sp. 97.3%)



Chemiluminescent Assay Quanta Flash INOVA

PR3-ANCA: a promising biomarker for ulcerative colitis with extensive disease.

Mahler M¹, Bogdanos DP, Pavlidis P, Fritzler MJ, Csernok E, Damoiseaux J, Bentow C, Shums Z, Forbes A, Norman GL.

ANTI-PR3

	CIA Quanta-Flash)	ELISA
Ulcerative Colitis (n=283) :	31.1%	1.9%
Crohn's Disease (n=208) :	6 %	0

CONCLUSION: The novel PR3 CIA may prove helpful in the differentiation of CrD from UC, as well as in the identification of UC patients with more extensive disease.

Novel Clinical and Diagnostic Aspects of Antineutrophil Cytoplasmic Antibodies

**Johannes Schulte-Pelkum,¹ Antonella Radice,² Gary L. Norman,¹
Marcos López Hoyos,³ Gabriella Lakos,¹ Carol Buchner,¹ Lucile Musset,⁴
Makoto Miyara,² Laura Stinton,⁵ and Michael Mahler¹**

¹ Department of Research, INOVA Diagnostics Inc., 9900 Old Grove Road, San Diego, CA 92131-1638, USA

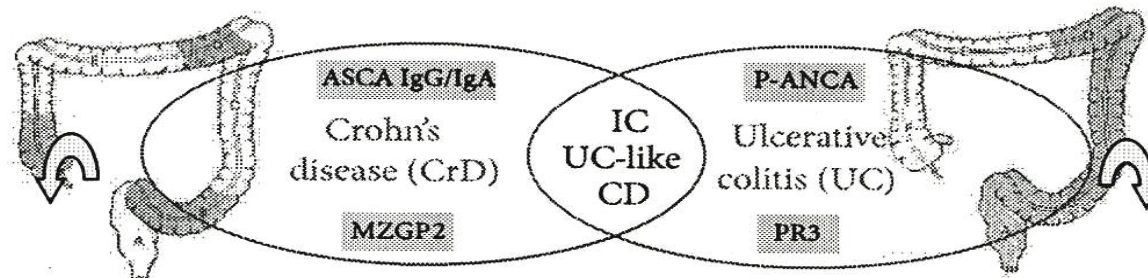
² Microbiology and Virology Institute, San Carlo Borromeo Hospital, Via Pio II 3, 20153 Milan, Italy

³ Division of Immunology, University Hospital Marqués de Valdecilla-IFIMAV, Avenida Valdecilla, 39008 Santander, Spain

⁴ Department of Immunology and Internal Medicine, Hospital of Pitie-Salpêtrière, Boulevard de l'Hôpital, 75634 Paris, France

⁵ Department of Medicine, University of Calgary, 3330 Hospital Dr. NW, Calgary, AB, Canada T2N 4N1

- Chronic, lifelong disease
- 1–1.5 million people in USA
- Substantial morbidity and health care utilization



- Whole GI tract (terminal ileum)
- Discontinuous
- Transmural inflammation
- Extraintestinal manifestations (skin, eyes, and joints) and colorectal malignancy

- Only large bowel
- Continuous
- Mucosal inflammation
- Extraintestinal manifestations (skin, eyes, and joints) and colorectal malignancy

PR3-ANCA: A Promising Biomarker in Primary Sclerosing Cholangitis (PSC)

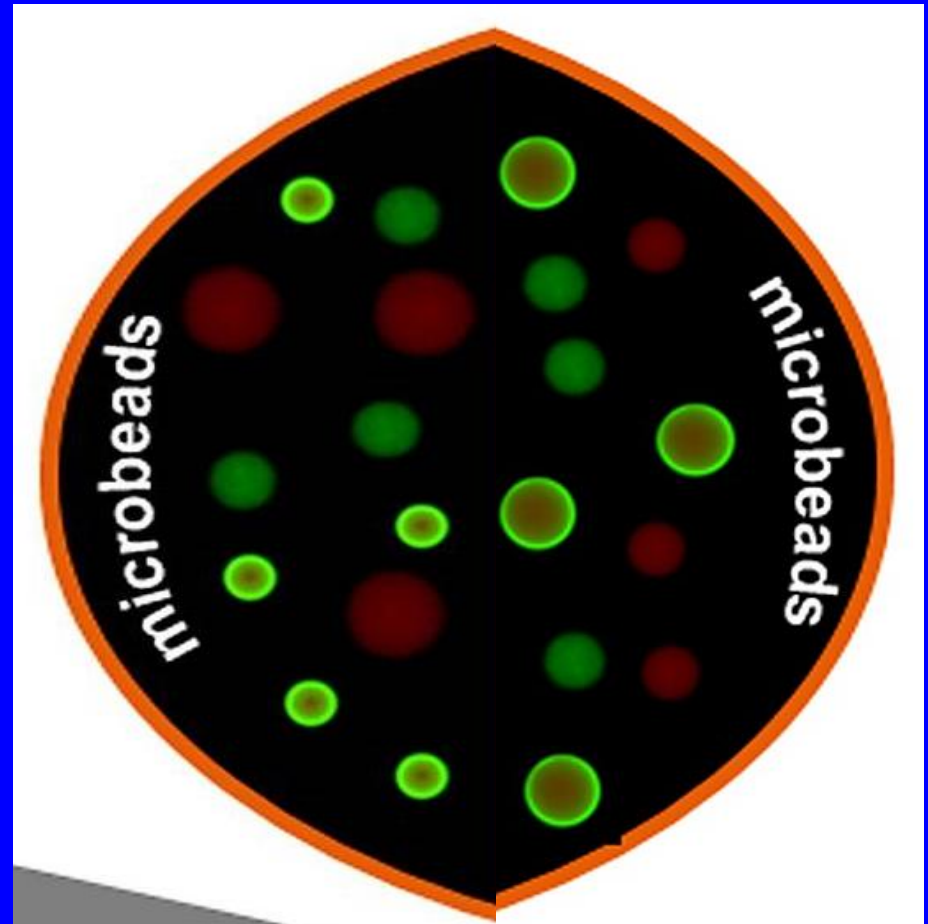
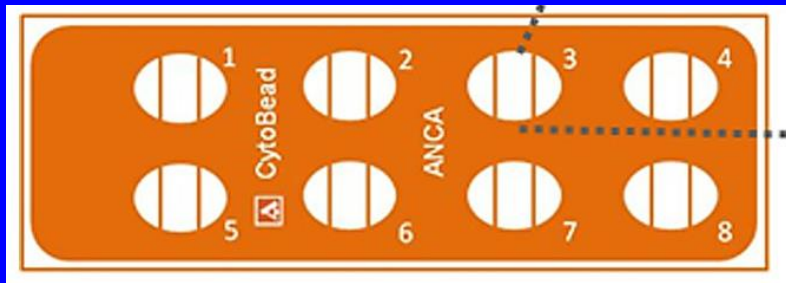
Laura M. Stinton^{1*}, Chelsea Bentow², Michael Mahler², Gary L. Norman², Bertus Eksteen¹, Andrew L. Mason³, Gilaad G. Kaplan¹, Bjorn Lindkvist⁴, Gideon M. Hirschfield⁵, Piotr Milkiewicz^{6,8}, Angela Cheung⁷, Harry L. A. Janssen⁷, Marvin J. Fritzler¹

1 Department of Medicine, University of Calgary, Calgary, Alberta, Canada, **2** Inova Diagnostics, Inc., San Diego, California, United States of America, **3** Department of Medicine, University of Alberta, Edmonton, Alberta, Canada, **4** Institute of Medicine, Sahlgrenska Academy, University of Gothenburg, Gothenburg, Sweden, **5** Centre for Liver Research, NIHR Biomedical Research Unit, University of Birmingham, Birmingham, United Kingdom, **6** Department of General, Transplant and Liver Surgery, Warsaw Medical University, Warsaw, Poland, **7** University Health Network, Division of Gastroenterology, Toronto Western Hospital, Toronto, Ontario, Canada, **8** Liver Research Laboratories, Pomeranian Medical University, Szczecin, Poland

CIA : 38.5% (c. 10%)

ELISA : 23.4% (c. 2.7%)

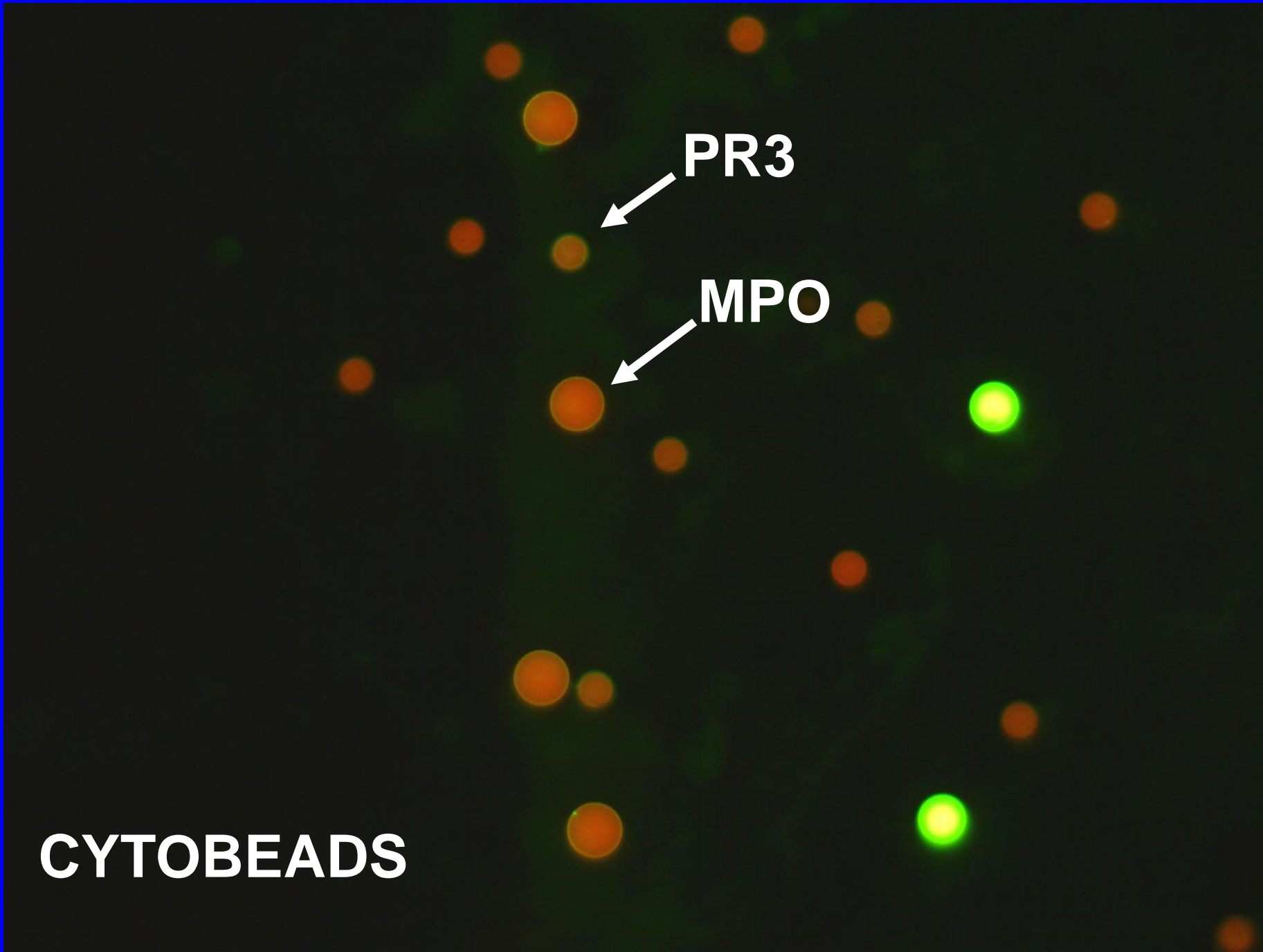
CytoBead ANCA



CYTOBEADS

PR3

MPO



PR3





A fluorescence microscopy image showing a field of cells. The cells are stained with a green fluorescent marker, likely MPO (Myeloperoxidase), which highlights certain cells. The background is dark, and the cells are scattered across the frame. The text 'MPO' is visible in the bottom left corner.

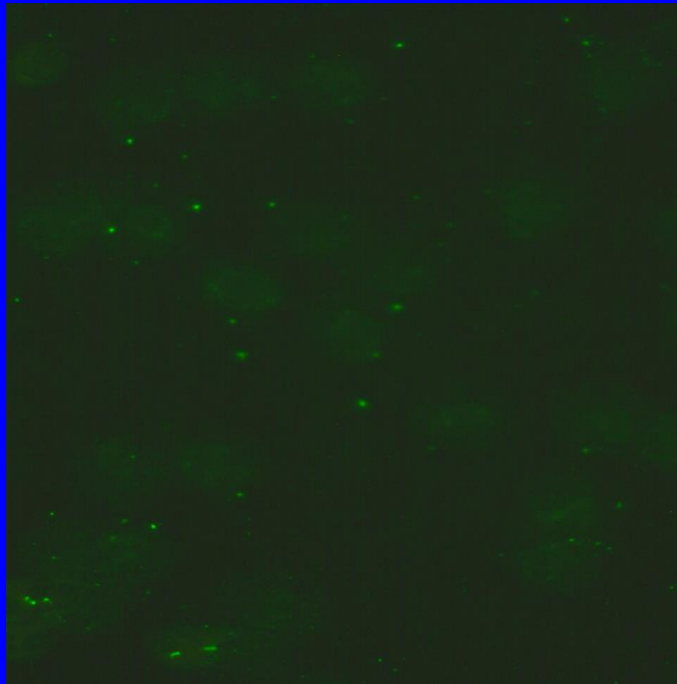
MPO

ULCERATIVE COLITIS

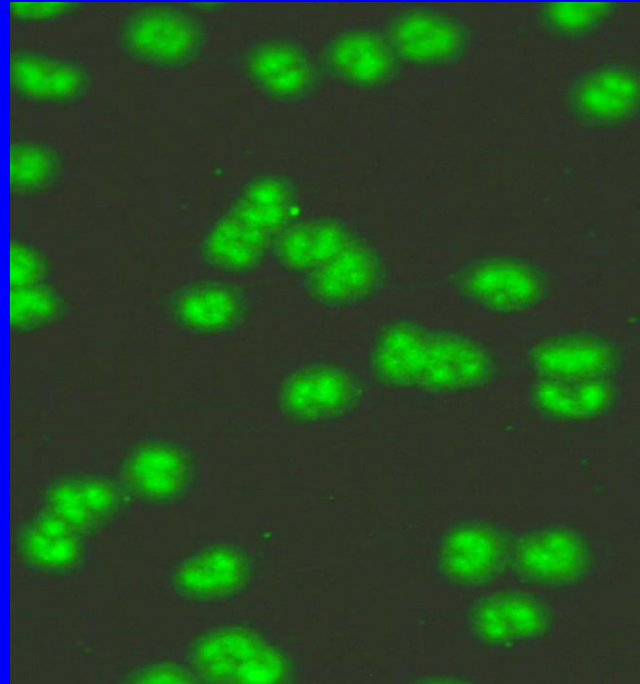
NANA pos 26

Anti-Lactoferrine-DNA pos

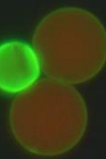
GRANULOCYTES MgSO₄

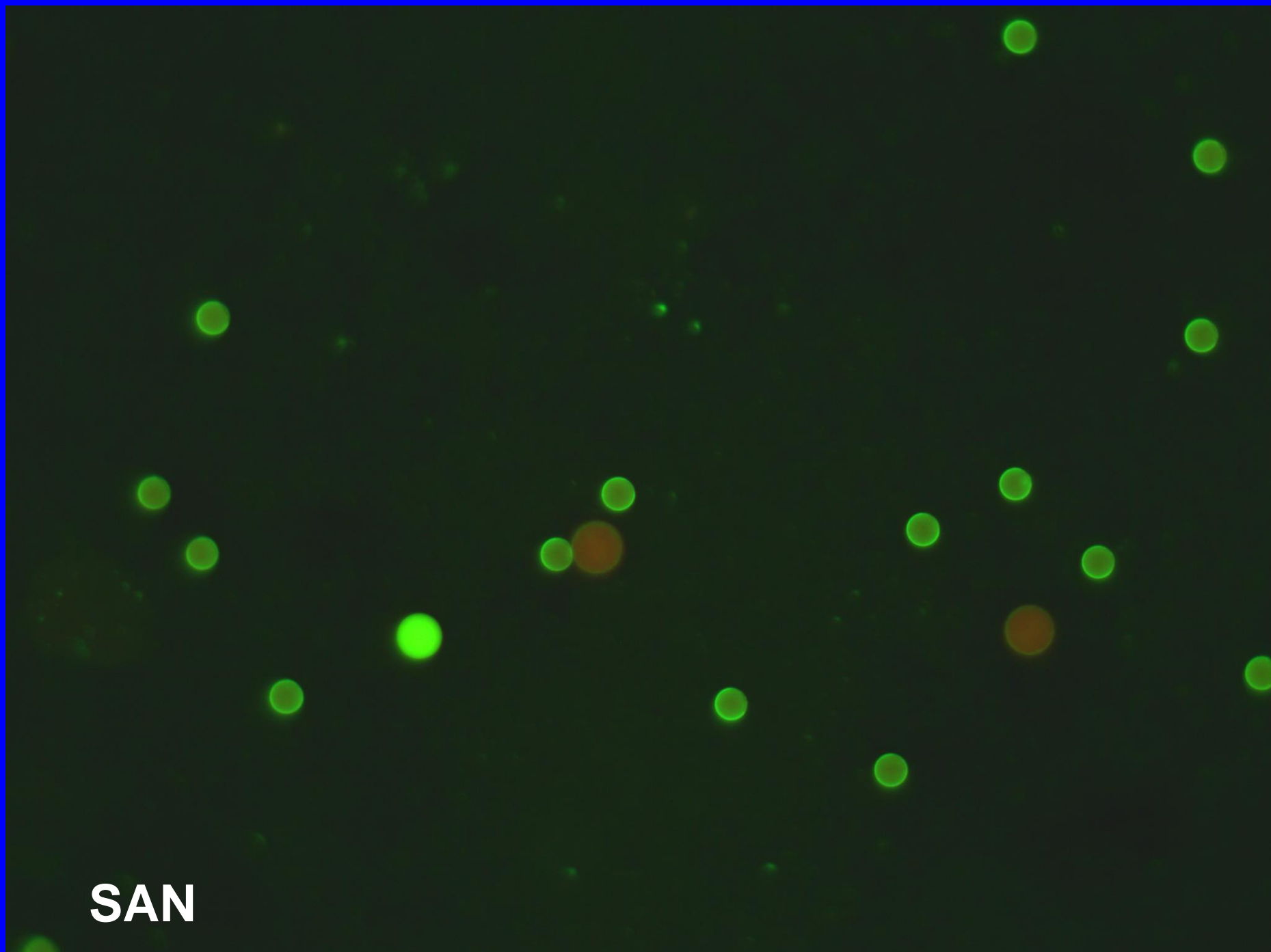


+ LACTOFERRINE

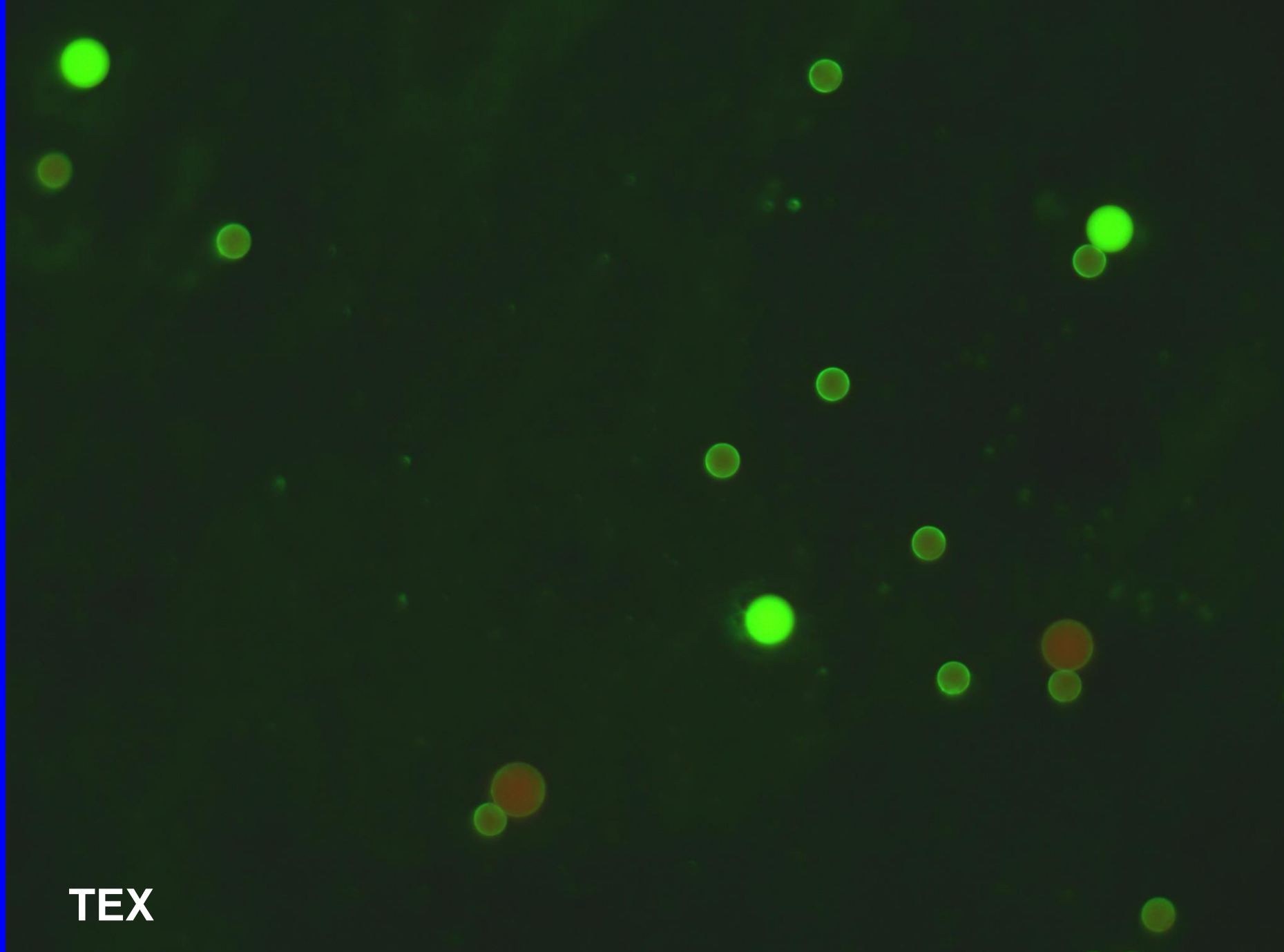


FR



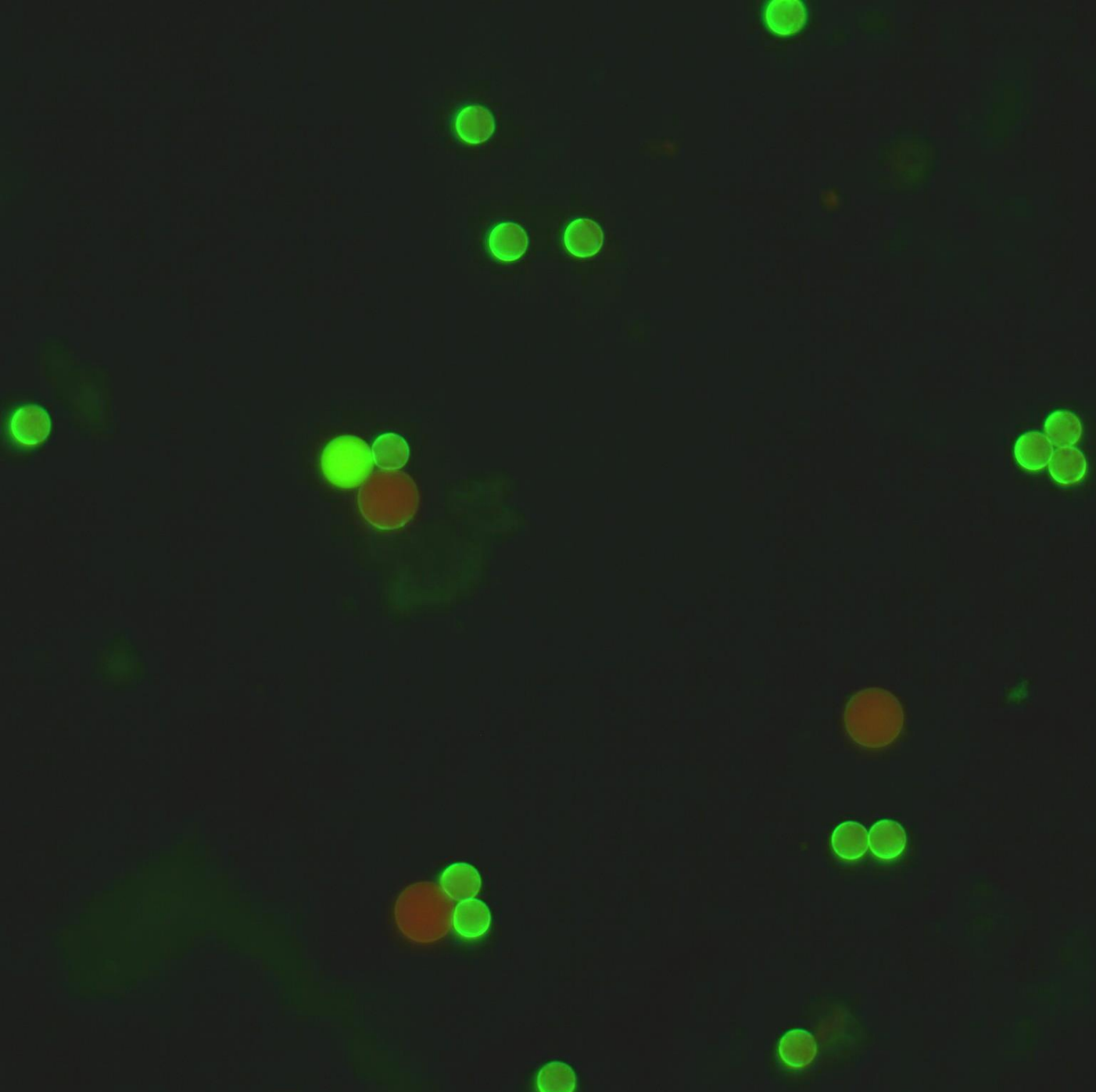


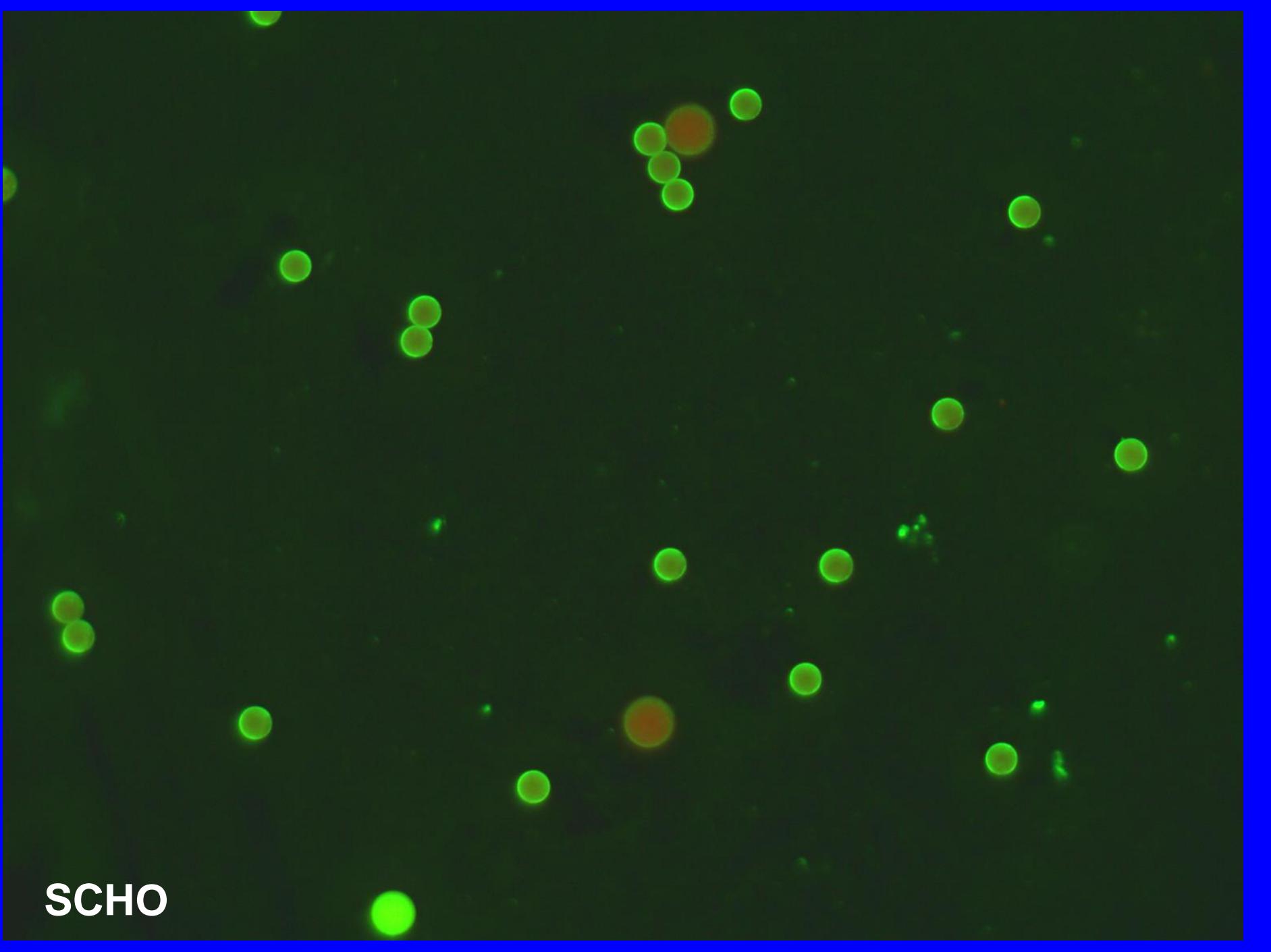
SAN



TEX

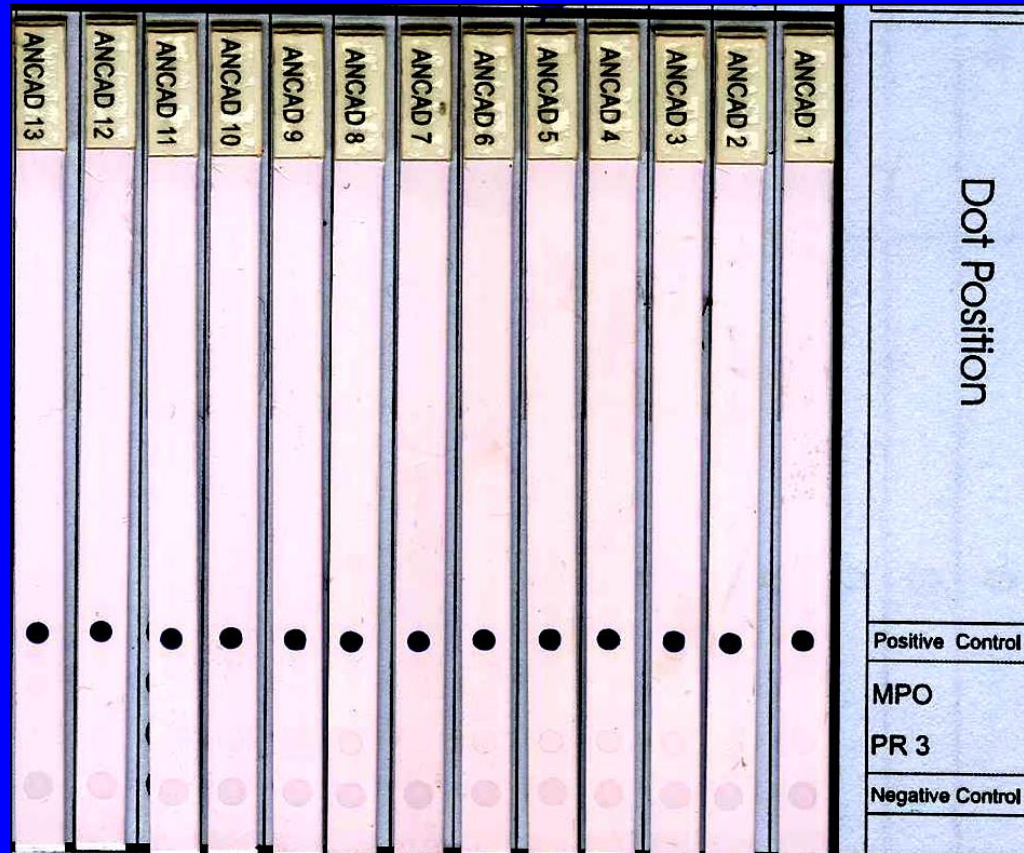
PESC





SCHO

ANTI-PR3 IMMUNODOT



ANTI-PR3 CYTOBEADS : 13/ 26 (50%)
ANTI-PR3 IMMUNODOT 0