

# INFLUENCE DE LA NATURE DU TUBE DE PRELEVEMENT POUR LA RECHERCHE DES AUTOANTICORPS

**TUBE SEC EN VERRE VACUTAINER BD**

**TUBE PLASTIQUE AVEC GEL DE SEPARATION  
VACUTAINER BD**

**Centrifugation 1h. ap.coagulation  
2 jours 4°C dans tube d'origine**

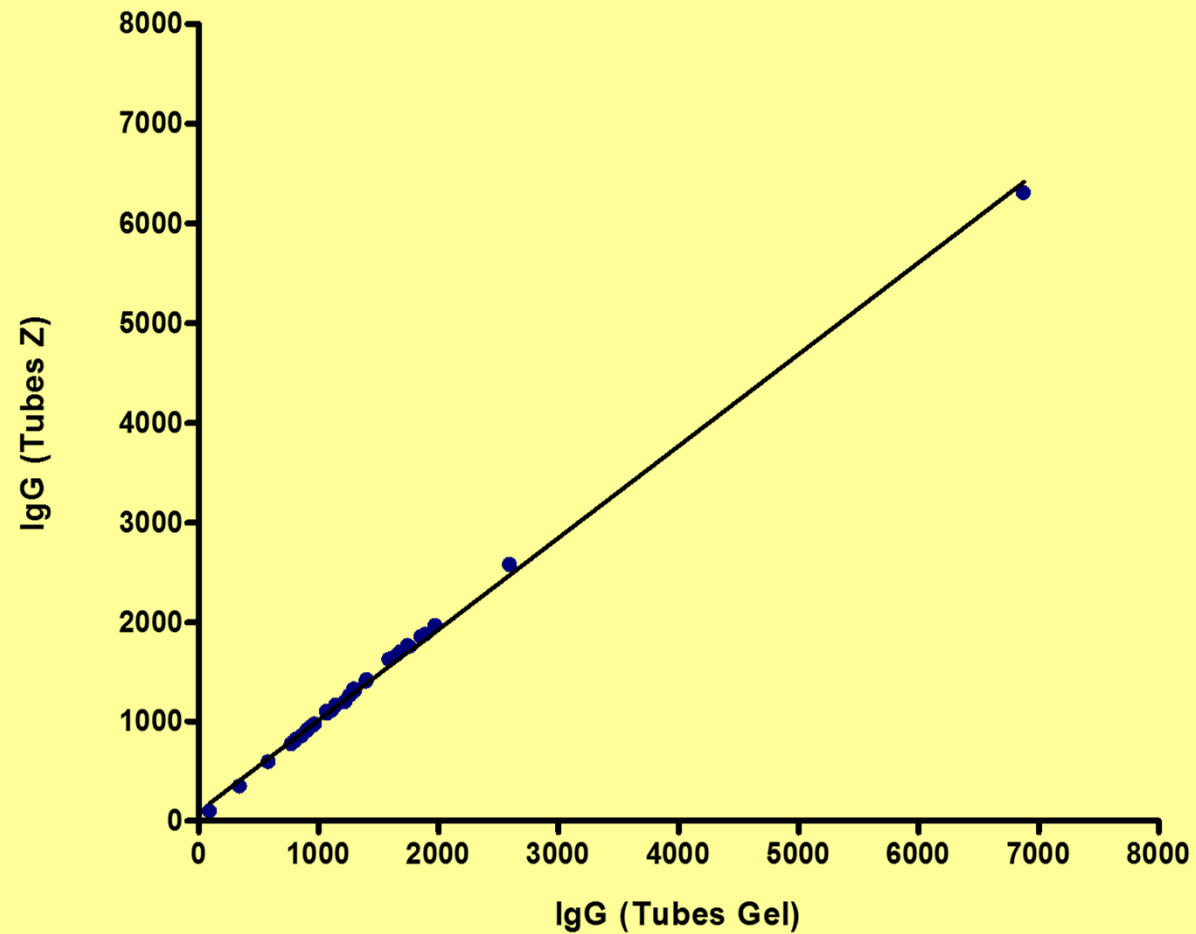
**49 sujets ANA neg**

**34 ANA pos. IF ,ENA ,anti-DNA**

**I.HILA  
R.L.HUMBEL**

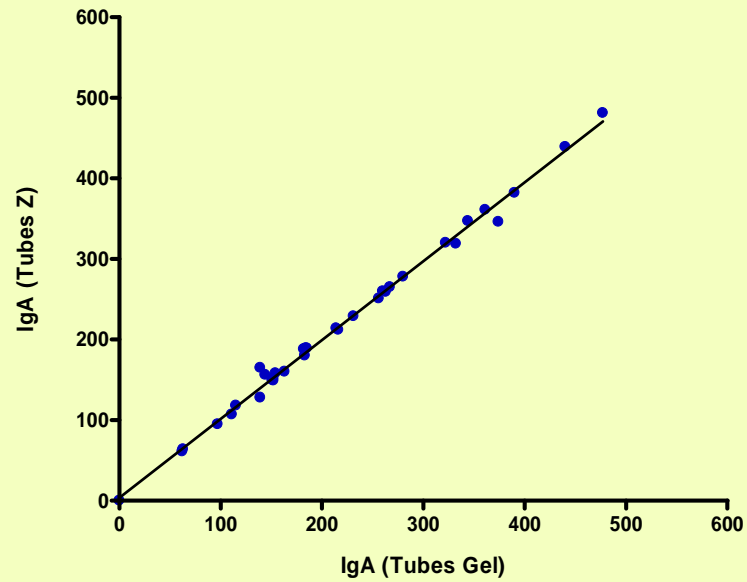


## Corrélation IgG (Tubes Gel)-IgG (Tubes Z)



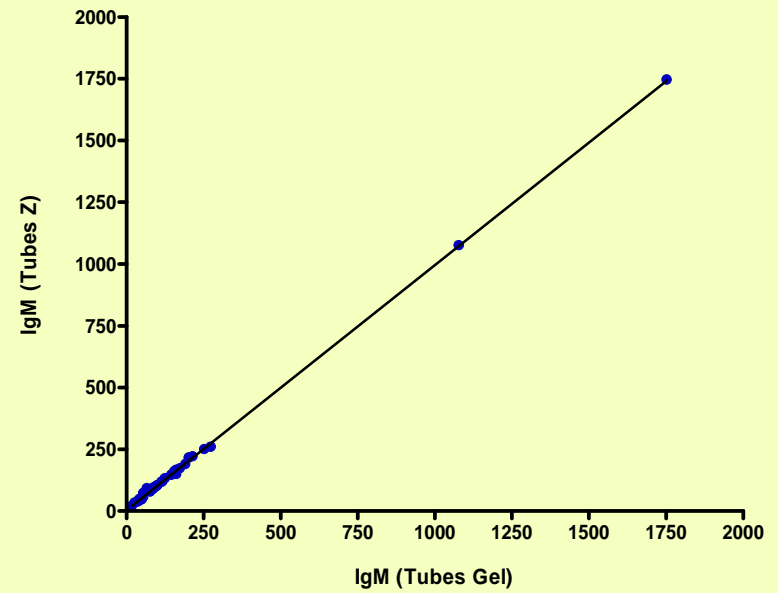
$y = 0.92x + 91.6$   
 $r = 0.999$   
 $n = 34$

### Corrélation IgA (Tubes Gel)-IgA (Tubes Z)



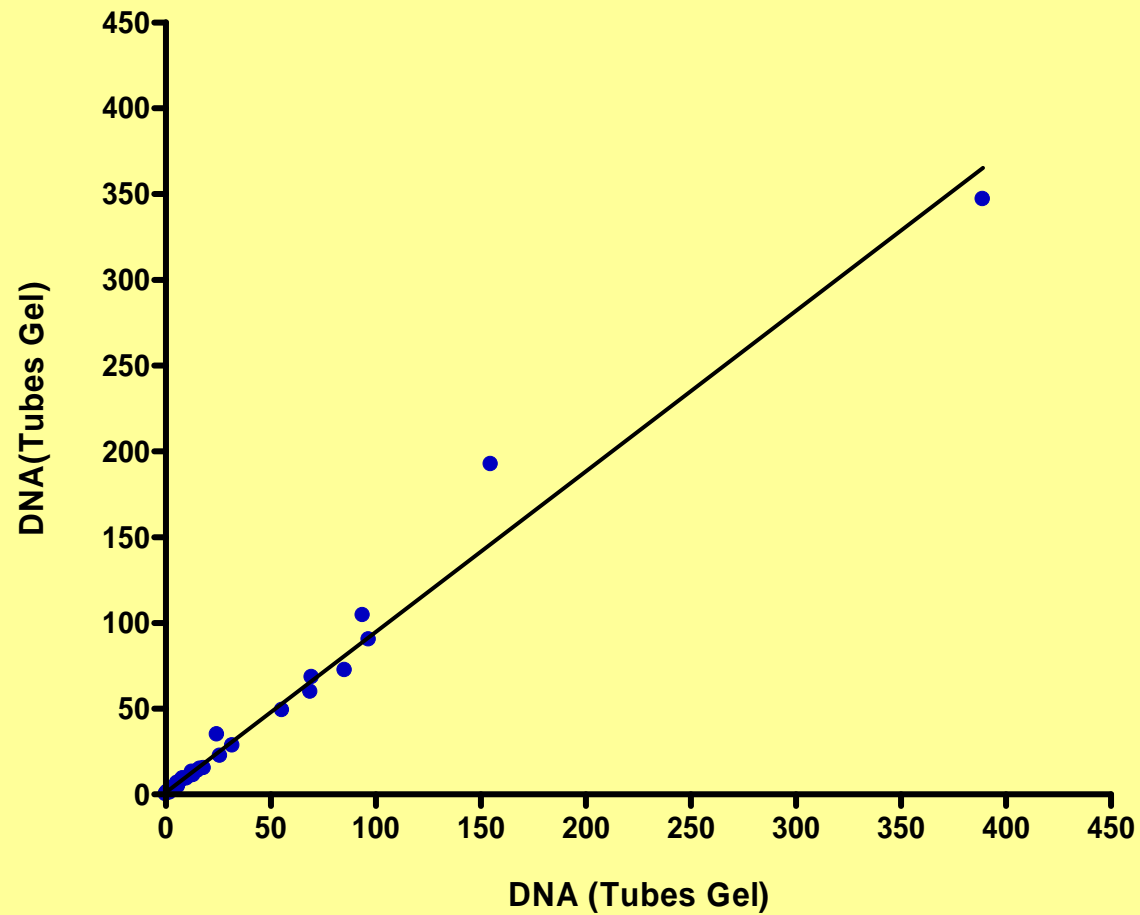
$y = 0.98x + 3.7$   
 $r = 0.997$   
 $n = 34$

### Corrélation IgM (Tubes Gel)-IgM (Tubes Z)



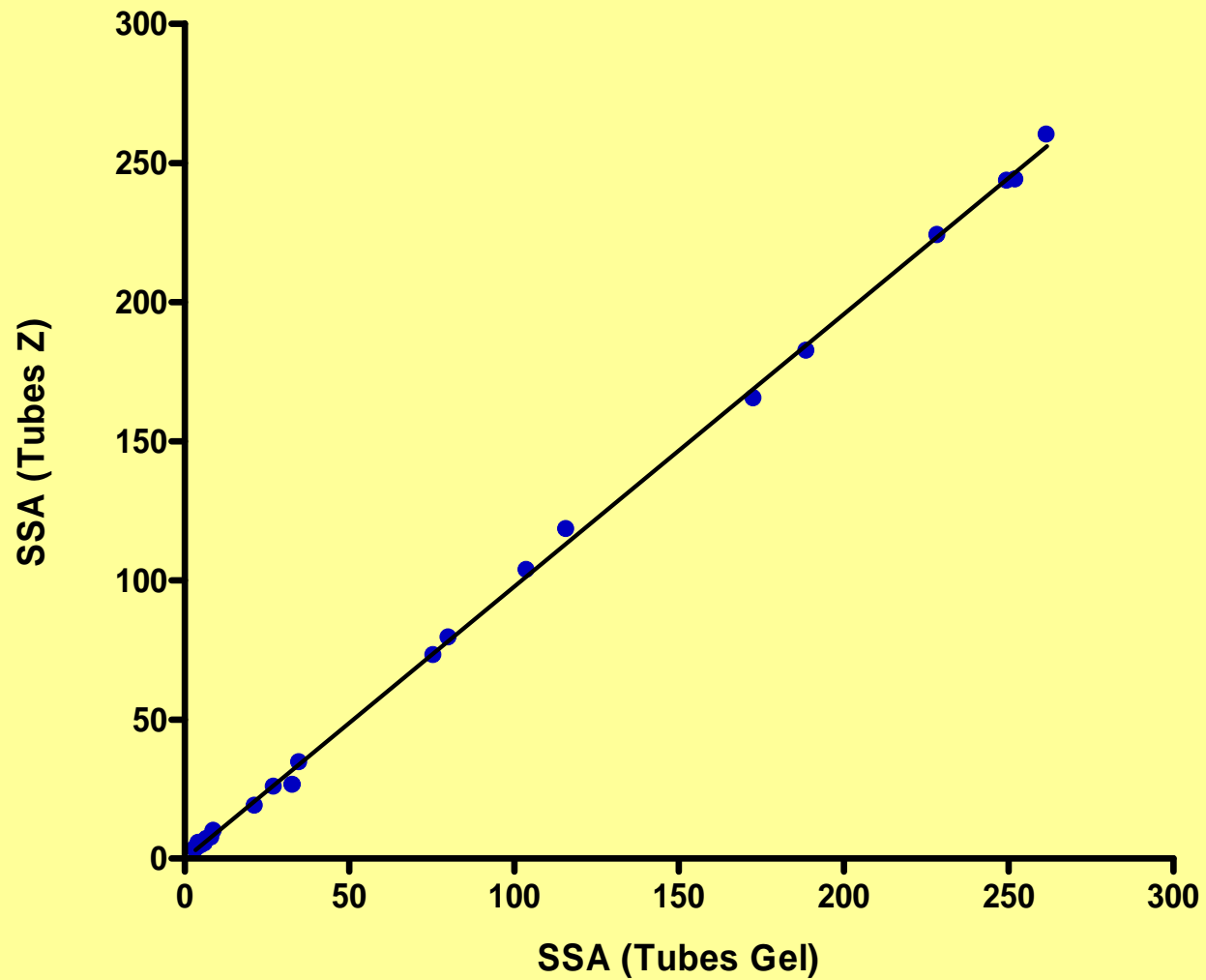
$y = 0.99x + 2.74$   
 $r = 1.00$   
 $n = 34$

## Corrélation DNA (Tubes Gel)-DNA (Tubes Z)



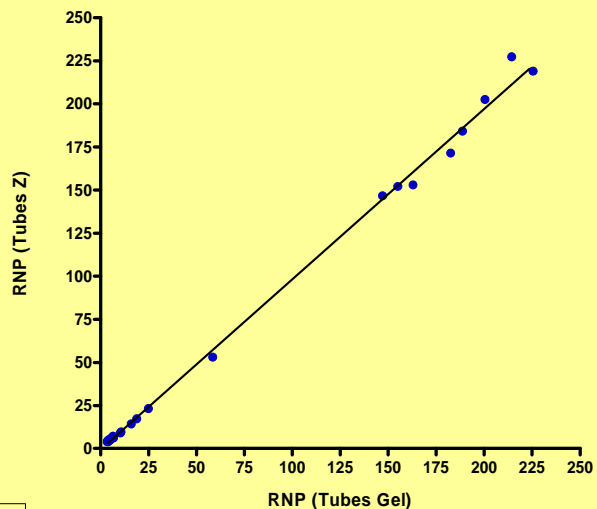
$y = 0.94x + 1.30$   
 $r = 0.99$   
 $n = 34$

## Corrélation SSA (Tubes Gel)-SSA (Tubes Z)



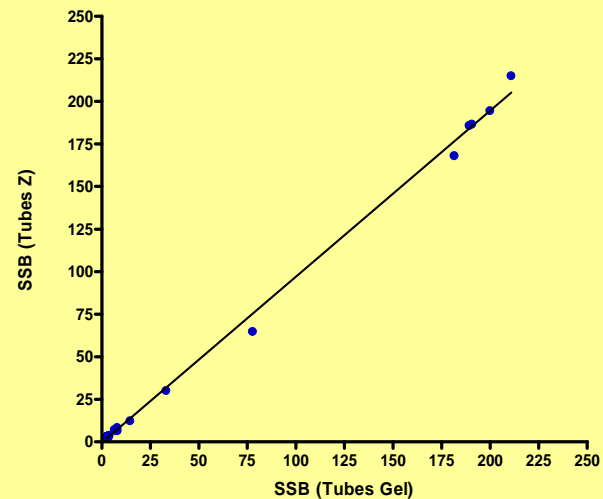
$y = 0.98x - 0.05$   
 $r = 1.00$   
 $n = 34$

Corrélation RNP (Tubes Gel)-RNP (Tubes Z)



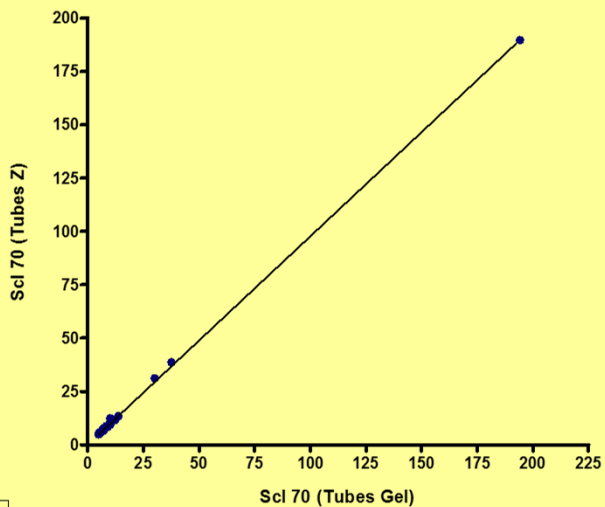
$y = 0.99x - 0.65$   
 $r = 0.999$   
 $n = 34$

Corrélation SSB (Tubes Gel)-SSB (Tubes Z)



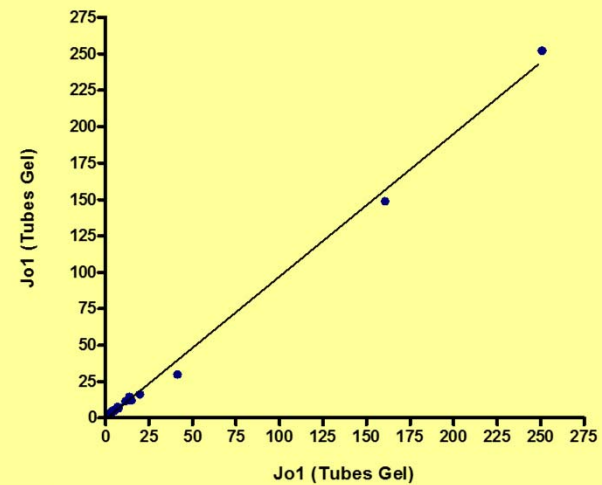
$y = 0.98x - 0.48$   
 $r = 0.999$   
 $n = 34$

Corrélation Scl 70 (Tubes Gel)-Scl 70 (Tubes Z)



$y = 0.98 + 0.04$   
 $r = 0.999$   
 $n = 34$

Corrélation Jo1 (Tubes Gel)-Jo1 (Tubes Z)



$y = 0.98x - 0.79$   
 $r = 0.998$   
 $n = 34$