

# **UN CAS DE NEUROPATHIE AIGUE PARTICULIER**

**René Louis HUMBEL**

**LLIP**

**Xavier BOSSUYT**

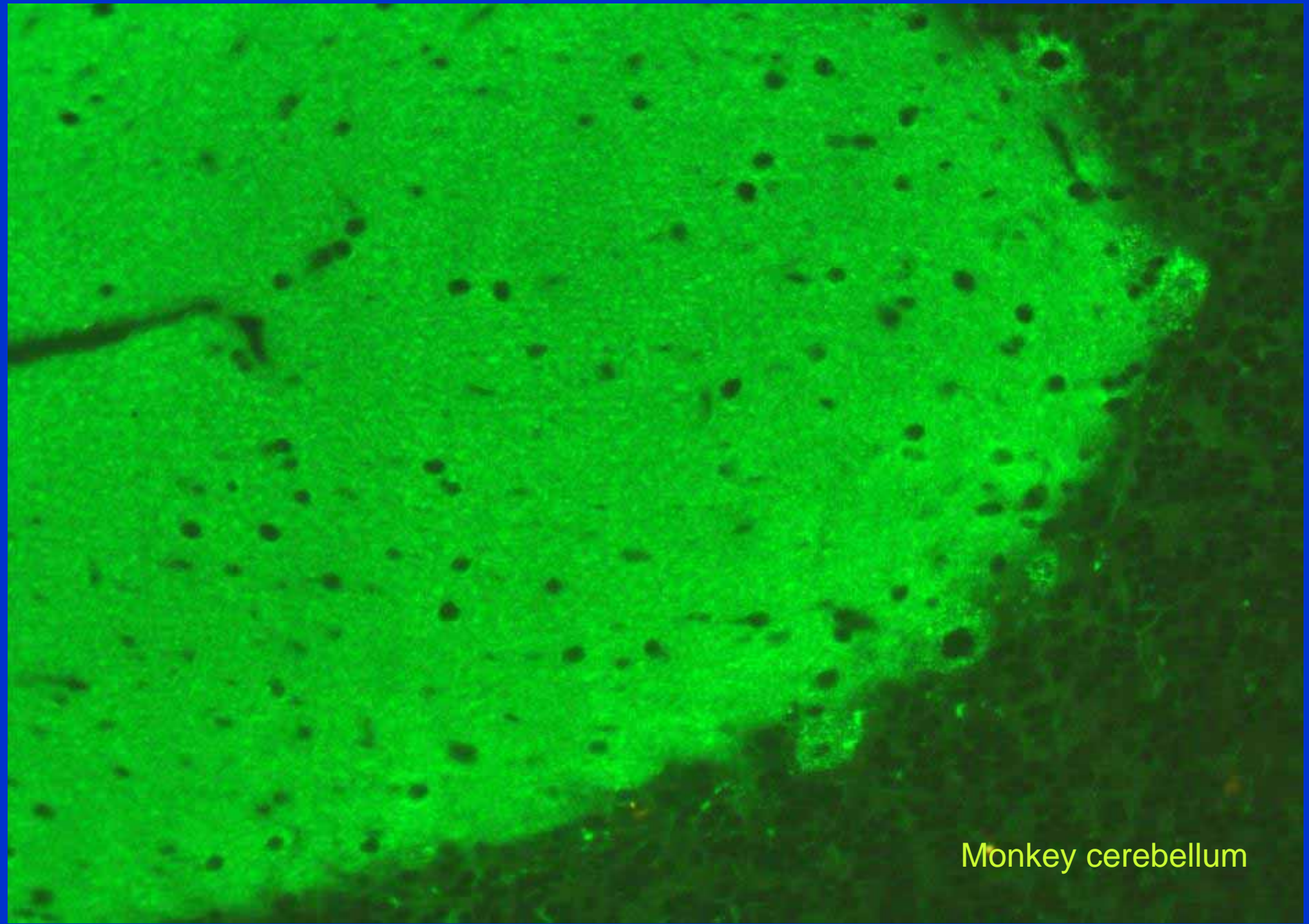
**KUL Immunol..**

**Philippe VAN DAMME**

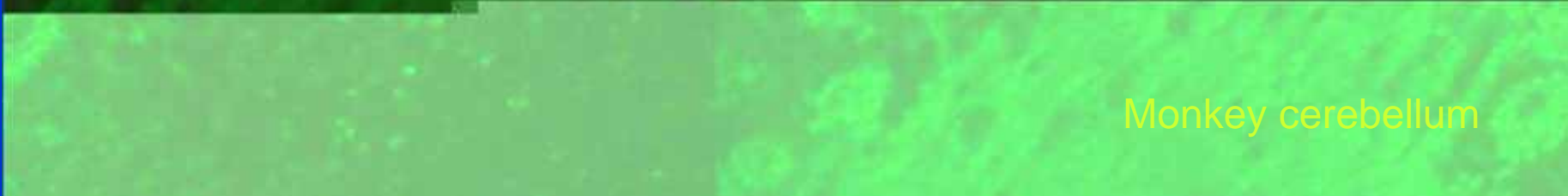
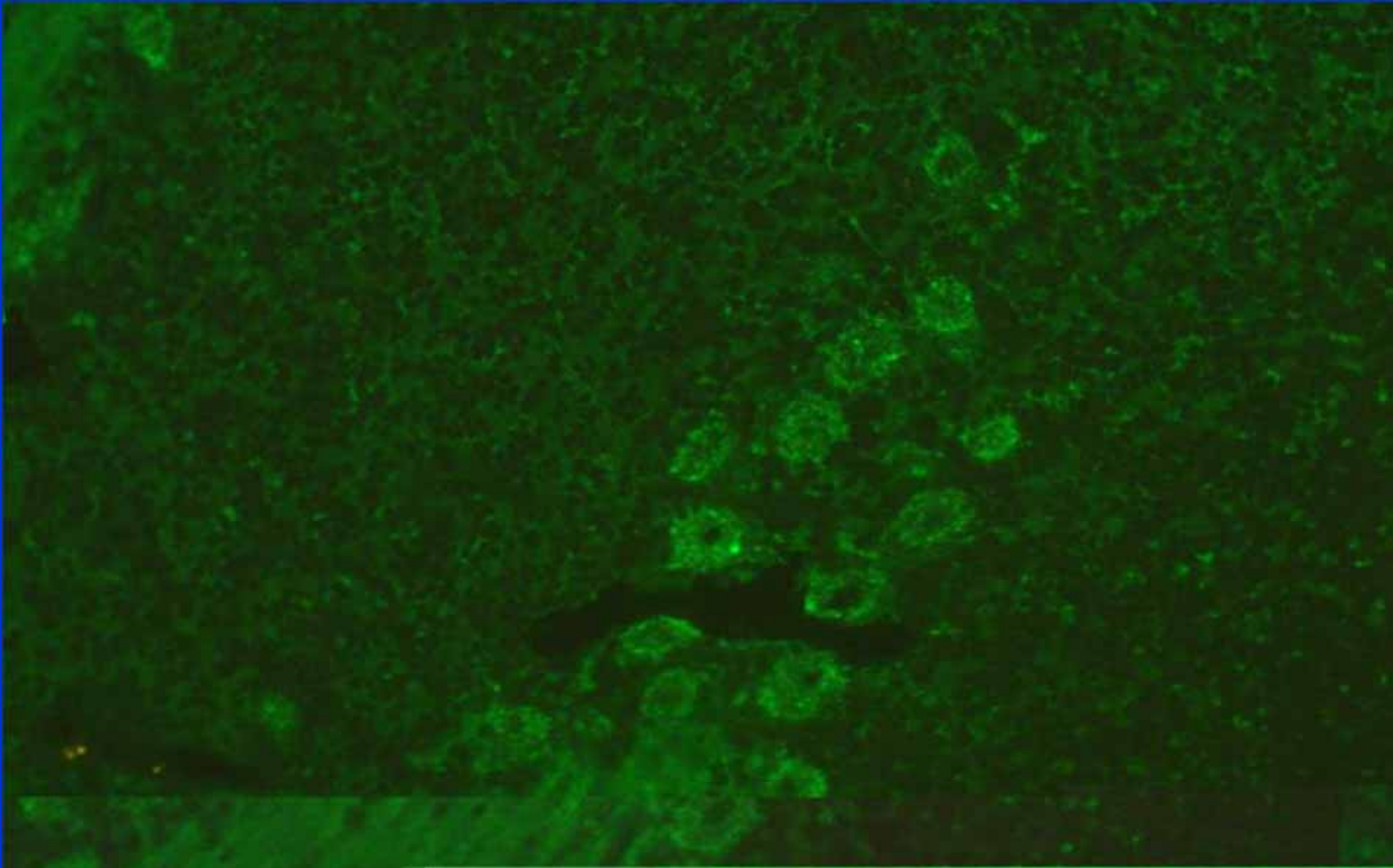
**KUL neurol.**

Monkey cerebellum

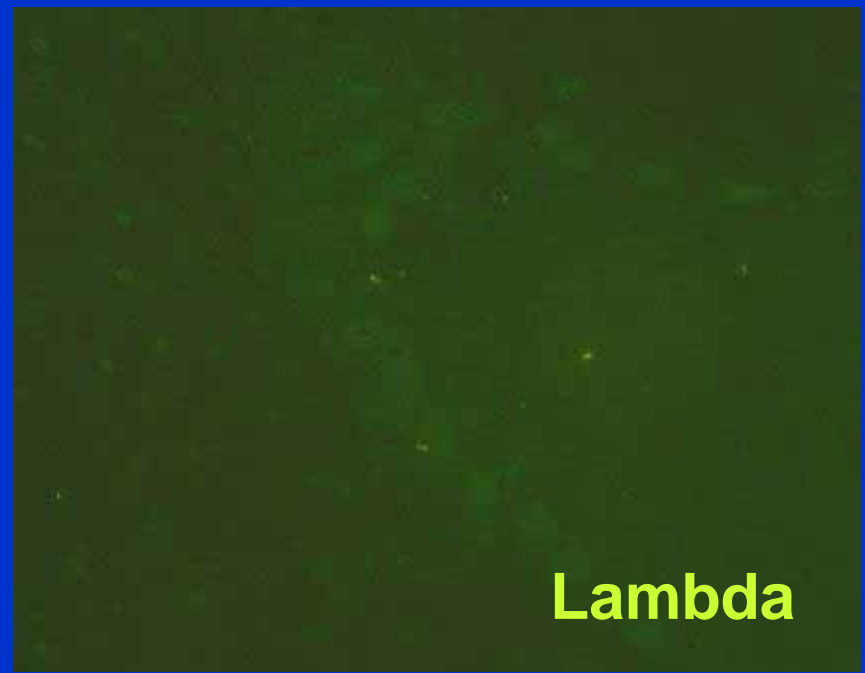
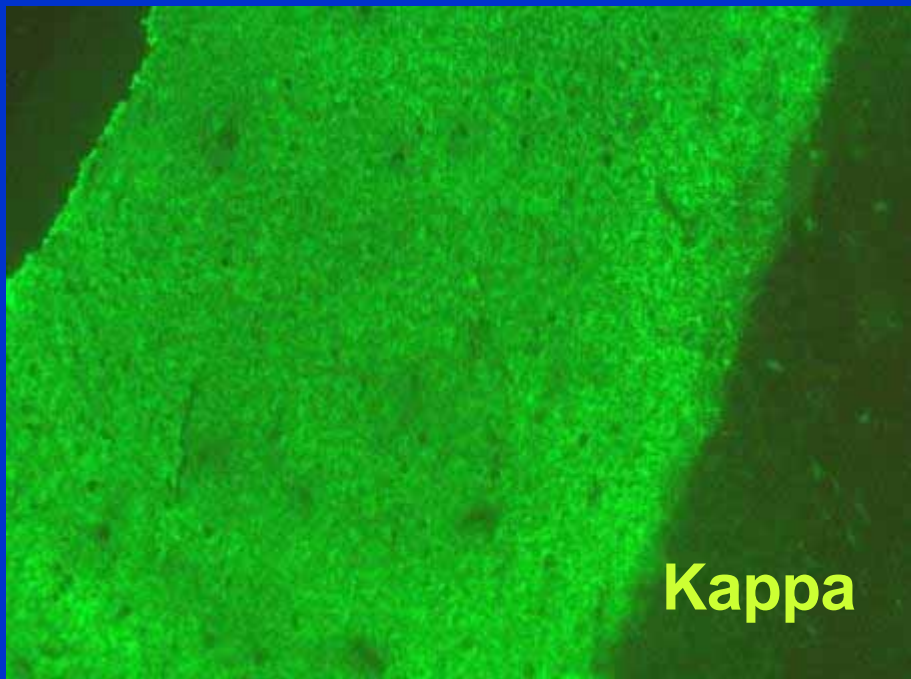
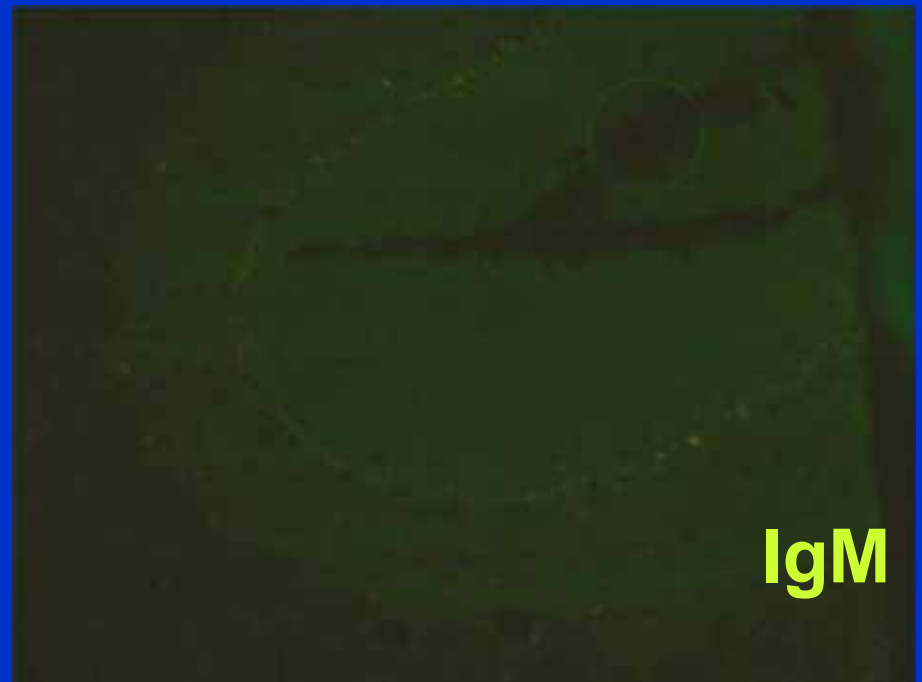
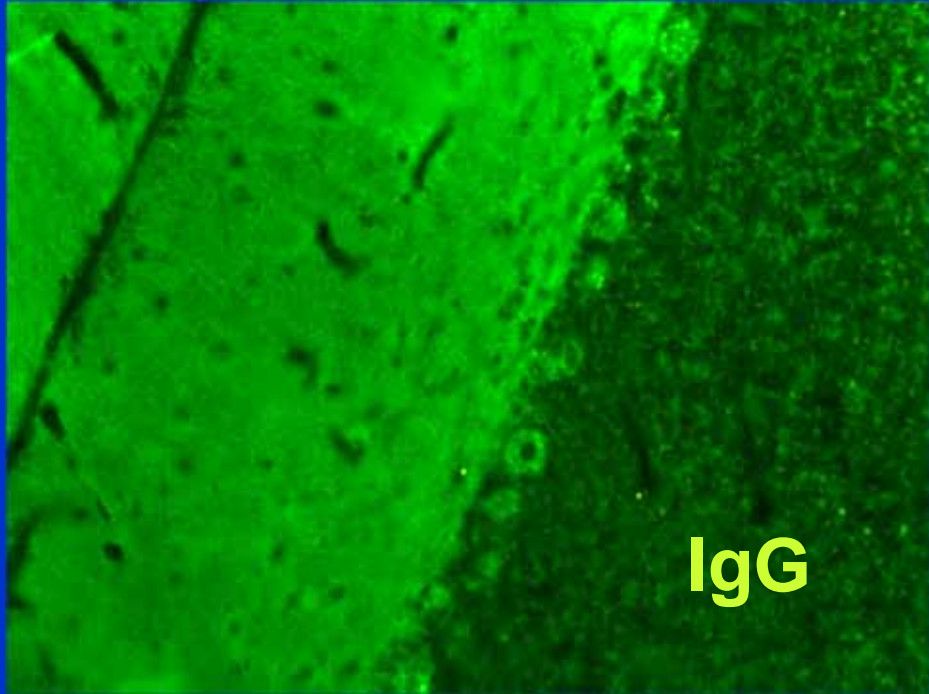


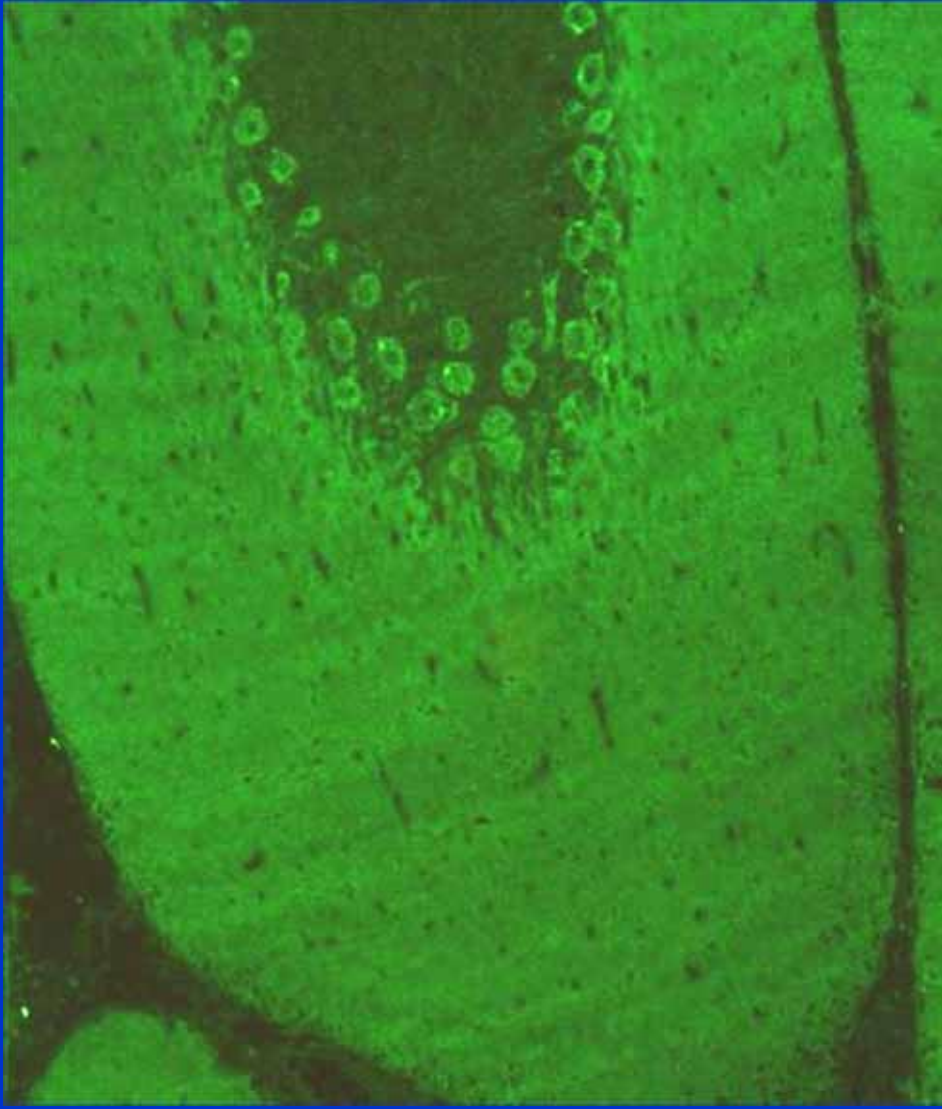


Monkey cerebellum



Monkey cerebellum

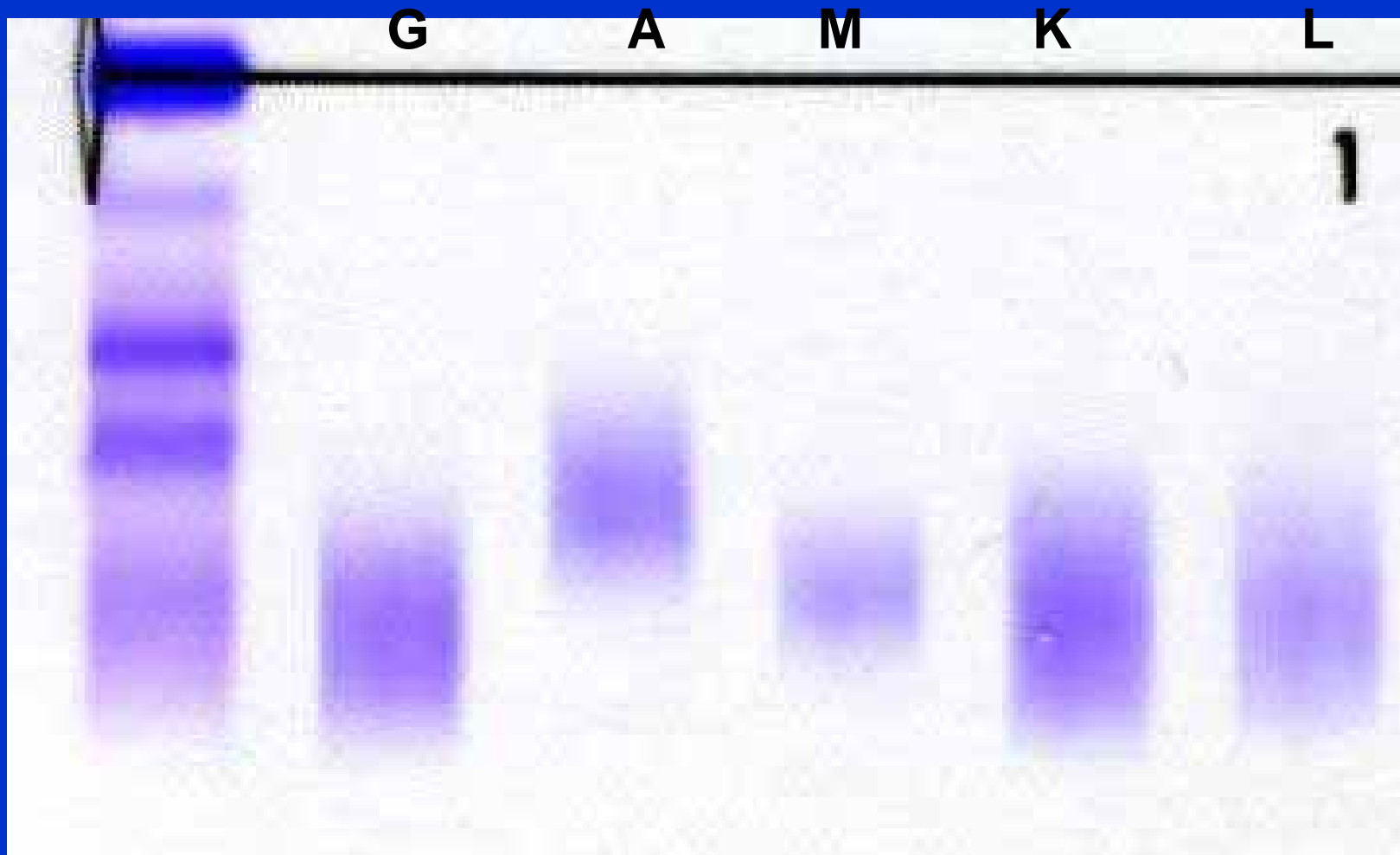




**INOVA**

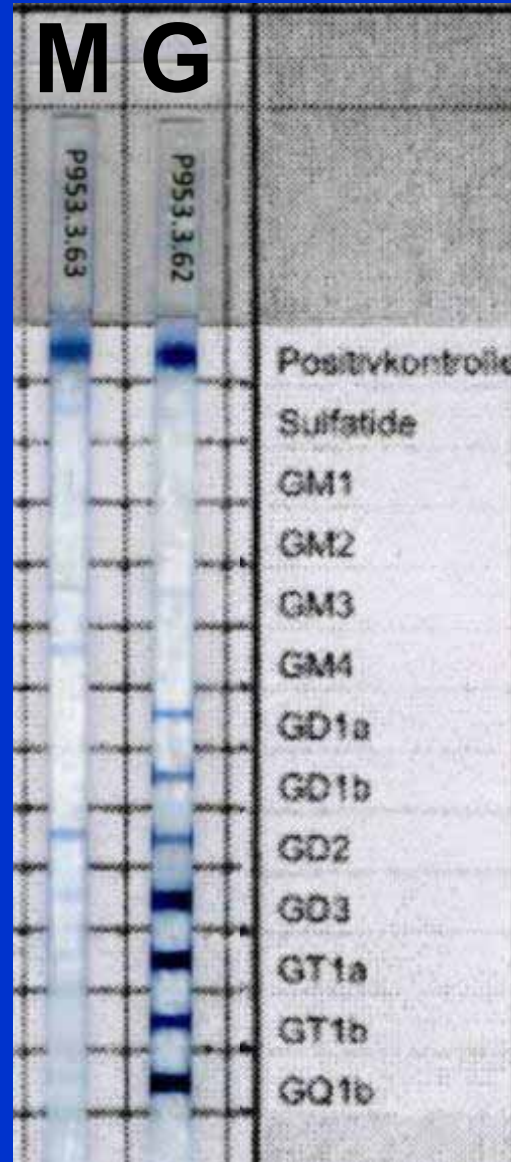


**EUROIMMUN**



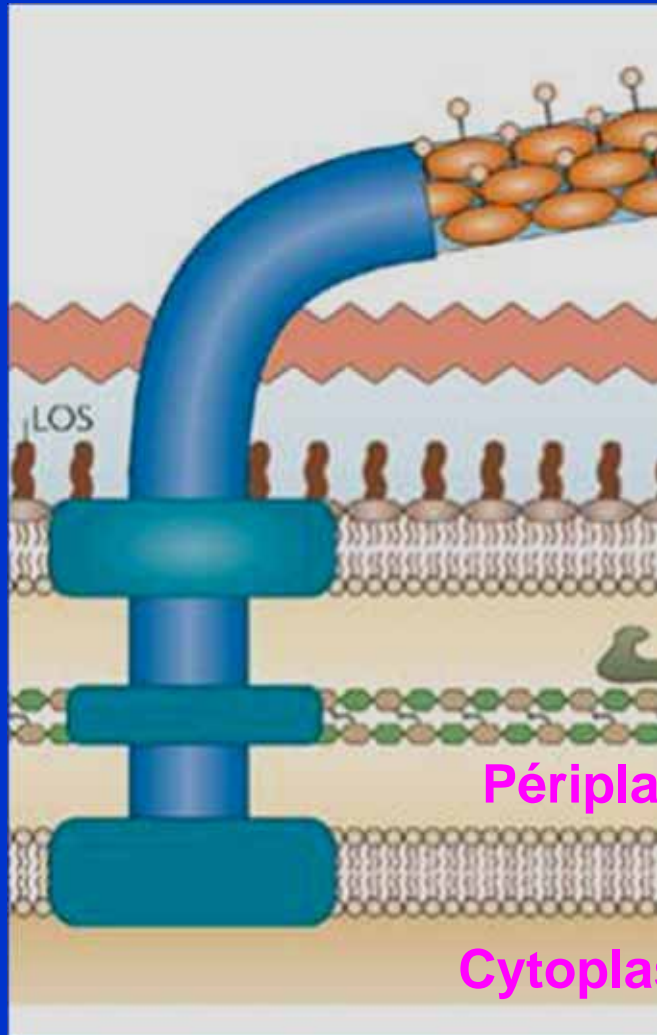
**IMMUNOFIXATION**

# ANTI-GANGLIOSIDES



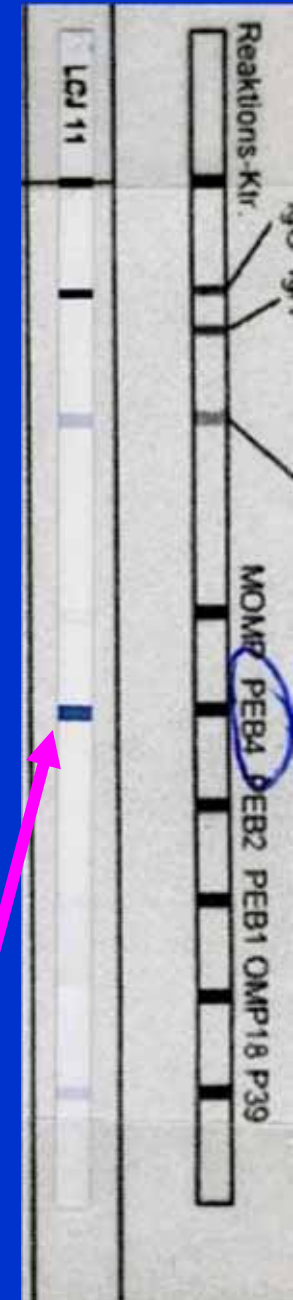


# Sérologie pour *Campylobacter jejuni*



## Antigènes testés      Index

Capsule	MOMP	3
Membrane externe	OMP18	5
Peptidoglycans	PEB1	2
	PEB2	1
Membrane interne	PEB4	5
	P39	5



**Mr.AD.**

**Perte progressive de la sensibilité aux MI**

**Difficultés de fixation**

**Troubles du Sommeil**

**Troubles de coordination**

**Ptose de l'œil droit**

**Limitation de la largeur de la vue**

**Ataxie appendiculaire**

**SYNDROME DE MILLER-FISHER**

**Récupération Totale Après IVIg**